



## **On-line PICASSO PROJECT**

**Comprehensive Catalogue Raisonné  
Prof. Dr. Enrique Mallen**

**1954**



**Portrait aux épis de blé et fleurs.** Vallauris. 1-January/1954. Ballpoint pen on card. 9 x 14 cm. Christie's. #82, 2138, 02/11/09. Formerly Sotheby's. #212, L08006, 02/06/08.

**OPP.54:272**

**Le modèle dans l'atelier.** Vallauris. 2-January/1954. Color pencils on wove drawing paper. 24 x 32 cm. Musée Picasso, Paris. Dation 1979.

**OPP.54:041**; MPP:1421; PP.54:001;  
MF.10:202p; PE.17\*:138p





**Femme et chat IV.** Vallauris. 3-January/1954. Brush & India ink on paper. 32 x 24 cm. Private collection, Riehen, Switzerland.

**OPP.54:141**; PP.54:001a; Z.XVI:101; AH.13\*:139; BA.03a\*:337



**Femme et singe.** Vallauris. 3-January/1954. India ink. 32 x 24 cm. Private collection.

**OPP.54:157**; PP.54:002; Z.XVI:102; LP.99:207p



**Femme et chat.** Vallauris. 3-January/1954. India ink. 32 x 24 cm. Private collection.

**OPP.54:185**; PP.54:003; Z.XVI:105

**Femme et singe.** Vallauris. 3-January/1954. Brush & India ink on paper. 32 x 24 cm. Christie's. #210, 11790, 02/03/16. Formerly Christie's. #16, 5541, 09/23/08.

**OPP.54:204**; PP.54:004; Z.XVI:106; JB.65:109





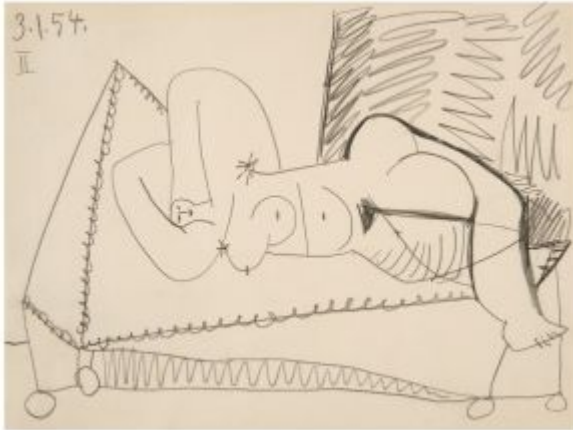
**Personnages.** Vallauris. 3-January/1954. Brush & India ink wash on paper. [31,8 x 23,8] 32 x 24 cm. Private collection, Riehen, Switzerland. Formerly Sotheby's. #385, 7050, 11/13/97.

**OPP.54:205**; PP.54:005; Z.XVI:107; AH.13\*:140; BA.03a\*:338

**Nu couché VI.** Vallauris. 3-January/1954. Pencil on paper. 24 x 32 cm. Christie's. #569, 2047, 11/07/08.

**OPP.54:291**





**Femme couchée II.** Vallauris. 3-January/1954.  
Pencil on paper. 23,5 x 31,5 cm. Private collection.

**OPP.54:323**; JR.10\*:155p

---

**La femme et le singe.** Vallauris. 3-January/1954. India  
ink. 32 x 24 cm. Conzen, Beck and Eggeling. 2011.

**OPP.54:338**; PP.54:007; Z.XVI:109; DU.11\*:n/a





**Femme jouant avec un chat.** Vallauris. 3-January/1954. India ink on paper. 32 x 24 cm. Private collection.

**OPP.54:553**; PP.54:006; Z.XVI:108

**Dessinateur et modèle.** Vallauris. 4-January/1954. Pen, brush & ink on paper. 32 x 24 cm. Private collection. Courtesy Galería Guillermo de Osma, Madrid. Formerly Sotheby's. #524, L04006, 02/04/04.

**OPP.54:149**; PP.54:017; Z.XVI:117; BA.03a\*:341; GB.14:87p; PE.01a\*:115





**Dessinateur et modèle.** Vallauris. 4-January/1954. Pen, brush & ink on paper. 31,1 x 23,5 cm. Sotheby's. #515, N08241, 11/08/06.

**OPP.54:192**; PP.54:020; Z.XVI:120; BS.55:323p; HN.13:270p



**Dessinateur et modèle.** Vallauris. 4-January/1954. Brush & India ink on paper. 32 x 24 cm. Private collection, Riehen, Switzerland.

**OPP.54:238**; PP.54:008; Z.XVI:103; AH.13\*:141; BA.03a\*:339; KK.93:62; TO.14\*:79





**Dessinateur et modèle.** Vallauris. 4-January/1954. India ink on paper. 31,8 x 23,8 cm. Private collection, Riehen, Switzerland.

**OPP.54:239**; PP.54:018; Z.XVI:118; AH.13\*:142;  
BA.03a\*:340; KK.93:61; RM.07:37p; TO.14\*:78



**Dessinateur et modèle.** Vallauris. 4-January/1954. India ink on paper. 32 x 24 cm. Fundación Almine & Bernard Ruiz-Picasso para el Arte.

**OPP.54:257**; BA.03a\*:363



**Femme et singe.** Vallauris. 4-January/1954. Pen & India ink.  
32 x 24 cm. Galerie Louise Leiris, Paris.

**OPP.54:328**; PP.54:010; Z.XVI:110; GD.77:85p

**Femme au chat.** Vallauris. 4-January/1954. Ink on  
paper. 31,9 x 23,8 cm. Sotheby's. #334, PF1336,  
04/18/13.

**OPP.54:405**; PP.54:013; Z.XVI:113





**Femme et chat.** Vallauris. 4-January/1954. Ink on paper. 32 x 24 cm. Karl & Faber Kunstauktionen GmbH, München. #443, 276, 05/31/17.

**OPP.54:439**; PP.54:012; Z.XVI:112; GB.14:87p

**Femme et singe.** Vallauris. 4-January/1954. Pen & brush & ink on paper. 32,3 x 24,2 cm. Sotheby's. #304, L14007, 06/24/14.

**OPP.54:453**; PP.54:015; Z.XVI:115





**Dessinateur et modèle.** Vallauris. 4-January/1954. India ink on paper. 32 x 24 cm. Private collection.

**OPP.54:456**; PP.54:023; Z.XVI:123; KK.93:54



**Dessinateur et modèle.** Vallauris. 4-January/1954. India ink on paper. 32 x 24 cm. Private collection.

**OPP.54:459**; PP.54:022; Z.XVI:122; KK.93:63



**Dessinateur et modèle.** Vallauris. 4-January/1954. India ink on paper. 31,7 x 23,7 cm. Christie's. #4, 3590, 10/23-24/2014.

**OPP.54:479**; PP.54:019; Z.XVI:119; BS.81\*:95; BS.84c\*:69; CN.56\*:6; MA.78\*:n/a; VI.81\*:81

**Femme accroupie au chat.** Vallauris. 4-January/1954. India ink on paper. 32 x 24 cm. Farsetti Arte. #824, 154, 11/27/10.

**OPP.54:493**; PP.54:011; Z.XVI:111





**Femme at chat.** Vallauris. 4-January/1954. India ink. 32 x 24 cm. Private collection, Essen.

**OPP.54:505**; PP.54:014; Z.XVI:114; MD.02\*:324p

---

**Femme et chat.** Vallauris. 4-January/1954. India ink on paper. 32 x 24 cm. Private collection. Formerly Christie's. #58, 03/14/91.

**OPP.54:552**; PP.54:009; Z.XVI:104





**Le modèle.** Vallauris. 4-January/1954. India ink & wash on paper. 32 x 24 cm. The Israel Museum, Jerusalem. (Inv B11.0814). Bequest of Mrs. Jules Lubell, New York, to American Friends of the Israel Museum, in memory of her nephew, Frederic Ira Sax.

**OPP.54:554**; PP.54:016; Z.XVI:116; BS.55:323p; JR.16\*:n/a

---

**Dessinateur et modèle.** Vallauris. 4-January/1954. India ink on paper. 32 x 24 cm. Private collection.

**OPP.54:555**; PP.54:021; Z.XVI:121





**L'amour masqué.** Vallauris. 5-January/1954. India ink. 32 x 24 cm. Private collection.

**OPP.54:223**; PP.54:026; Z.XVI:126; KK.93:83

---

**L'amour masqué.** Vallauris. 5-January/1954. Brush & India ink on paper. 32 x 24 cm. Private collection, Riehen, Switzerland.

**OPP.54:240**; PP.54:038; Z.XVI:138; AH.13\*:143; BA.03a\*:342







**L'amour masqué.** Vallauris. 5-January/1954. Brush & black ink on paper. 32 x 23,8 cm. Christie's. #130, 2218, 11/04/09.

**OPP.54:297**; PP.54:027; Z.XVI:127; KK.93:84

---

**Femme et amour.** Vallauris. 5-January/1954. India ink. 32 x 24 cm. Private collection.

**OPP.54:327**; PP.54:034; Z.XVI:134; PD.65:213p





**Femme et vieillard.** Vallauris. 5-January/1954. India ink. 32 x 24 cm. Private collection.

**OPP.54:333**; PP.54:030; Z.XVI:130; BS.55:322p; GB.14:80p; KK.93:86; ON.66:45p

**L'amour masqué.** Vallauris. 5-January/1954. India ink. 32 x 24 cm. Private collection.

**OPP.54:340**; PP.54:024; Z.XVI:124; BW.03:23; JB.65:110; KK.93:78





**L'amour masqué.** Vallauris. 5-January/1954. India ink. 32 x 24 cm. Private collection.

**OPP.54:341**; PP.54:035; Z.XVI:135; JB.65:111

---

**L'amour masqué.** Vallauris. 5-January/1954. India ink. 32 x 24 cm. National Gallery of Art, Washington, DC. (Inv 2014.17.21).

**OPP.54:398**; PP.54:025; Z.XVI:125; KK.93:82; SR.86\*:n/a





**L'amour masqué.** Vallauris. 5-January/1954. India ink. 32 x 24 cm. Private collection.

**OPP.54:399**; PP.54:028; Z.XVI:128; BS.55:320p

---

**L'amour masqué.** Vallauris. 5-January/1954. India ink on paper. 32 x 24 cm. Private collection.

**OPP.54:465**; PP.54:041; Z.XVI:141; KK.93:79





**L'amour masqué.** Vallauris. 5-January/1954. Brush & India ink on paper. 32 x 24 cm. Christie's. #535, 22057, 11/11/23. Formerly Christie's. #1018, 3784, 11/13/15; Arthur and Anita Kahn Collection, New York.

**OPP.54:466**; PP.54:040; Z.XVI:140; KK.93:80

---

**L'amour masqué.** Vallauris. 5-January/1954. India ink on paper. 32 x 24 cm. Sotheby's. #570, 07/01/87.

**OPP.54:467**; PP.54:039; Z.XVI:139; KK.93:81





**L'amour masqué.** Vallauris. 5-January/1954. India ink on paper. 32 x 24 cm. Alexander Iolas Gallery, New York.

**OPP.54:468**; PP.54:029; Z.XVI:129; JL.67b:89p; KK.93:85

---

**L'amour masqué.** Vallauris. 5-January/1954. Ink on paper. S/U. Private collection.

**OPP.54:469**; PP.54:031; Z.XVI:131; KK.93:87





**Femme et amour.** Vallauris. 5-January/1954. India ink on paper. 32 x 24 cm. Private collection. Formerly Sotheby's. #372m 12/05/90.

**OPP.54:556**; PP.54:032; Z.XVI:132

**L'amour masqué.** Vallauris. 5-January/1954. India ink on paper. 32 x 24 cm. Private collection.

**OPP.54:557**; PP.54:033; Z.XVI:133





**L'amour masqué.** Vallauris. 5-January/1954. India ink on paper. 32 x 24 cm. Private collection.

**OPP.54:558**; PP.54:036; Z.XVI:136



**Femme et amour masqué.** Vallauris. 5-January/1954. India ink on paper. 32 x 24 cm. Private collection.

**OPP.54:559**; PP.54:037; Z.XVI:137





**Clown au miroir ret femme IX (pour Verve: Revue artistique et littéraire).** Vallauris. 6-January/1954. India ink on paper. 24 x 32 cm. Private collection.

**OPP.54:282**; PP.54:050; Z.XVI:150; PD.09:425p; UP.00:974

**Femme et clown VI.** Vallauris. 6-January/1954. Pen & India ink on paper. 24 x 32 cm. Sotheby's. #117, L19004, 02/27/19. Formerly Christie's. #243, 8050, 02/08/12.

**OPP.54:359**; PP.54:047; Z.XVI:147





**Clown et femme VIII.** Vallauris. 6-January/1954.  
Pen & India ink wash on paper. 24 x 31,5 [32] cm.  
Galerie Kornfeld und Cie, Bern. 2012.

**OPP.54:365**; PP.54:049; Z.XVI:149

---

**Dans l'atelier XIII.** Vallauris. 6-  
January/1954. Brush & India ink. 24 x 32  
cm. Morton G. Neumann Family Collection,  
Chicago.

**OPP.54:429**; PP.54:054; Z.XVI:154;  
CH.68a\*:99





**Les gens du cirque X.** Cannes. 6-January/1954.  
Ink on paper. 24 × 32 cm. Richard Nagy Ltd.,  
London.

**OPP.54:518**; PP.54:051; Z.XVI:151

---

**Petit clown à cheval I.** Vallauris. 6-  
January/1954. India ink on paper. 24 x 32  
cm. Private collection.

**OPP.54:560**; PP.54:042; Z.XVI:142





**Petit clown à cheval II.** Vallauris. 6-January/1954. India ink on paper. 24 x 32 cm. Private collection.

**OPP.54:561**; PP.54:043; Z.XVI:143

**Singe à cheval III.** Vallauris. 6-January/1954. India ink on paper. 24 x 32 cm. Private collection.

**OPP.54:562**; PP.54:044; Z.XVI:144





**Le chien savant IV.** Vallauris. 6-January/1954.  
India ink on paper. 24 x 32 cm. Private collection.

**OPP.54:563**; PP.54:045; Z.XVI:145

---

**Clown et femme V.** Vallauris. 6-  
January/1954. Brush & pen & India ink on  
paper. 24 x 32 cm. Christie's. #28, 19578,  
05/29-06/11/20.

**OPP.54:564**; PP.54:046; Z.XVI:146





**Clown et femme VII.** Vallauris. 6-January/1954.  
India ink on paper. 24 x 32 cm. Private collection.

**OPP.54:565**; PP.54:048; Z.XVI:148

---

**La colombe XI.** Vallauris. 6-January/1954.  
India ink on paper. 24 x 32 cm. Private collection.

**OPP.54:567**; PP.54:052; Z.XVI:152





**Dans la loge du clown XII.** Vallauris. 6-January/1954. India ink on paper. 24 x 32 cm. Private collection.

**OPP.54:568**; PP.54:053; Z.XVI:153

**Dans l'atelier XIV.** Vallauris. 6-January/1954. India ink on paper. 24 x 32 cm. Private collection.

**OPP.54:569**; PP.54:055; Z.XVI:155





**Bacchante IV.** Vallauris. 7-January/1954. Brush & India ink on paper. [23] 24,1 x 32,1 cm. Private collection, Riehen, Switzerland. Formerly Sotheby's. #300, N07721, 11/08/01.

**OPP.54:044**; PP.54:059; Z.XVI:157; AH.13\*:144; BA.03a\*:343

---

**Les saltimbanques II (pour Verve: Revue artistique et littéraire).** Vallauris. 7-January/1954. Pen & brush & India ink on paper. 24 x 32 cm. Christie's. #1109, 3737, 05/15/15.

**OPP.54:283**; PP.54:057; Z.XVI:159; DC.87:406; LO.55a\*:38; PD.09:425p; UP.00:975







**Nymphe et faune VI (pour Verve: Revue artistique et littéraire).** Vallauris. 7-January/1954. India ink on paper. 24 x 32 cm. Private collection.

**OPP.54:284**; PP.54:061; Z.XVI:161; UP.00:977

---

**Dans l'atelier I (pour Verve: Revue artistique et littéraire).** Vallauris. 7-January/1954. India ink on paper. 24 x 32 cm. Private collection. Formerly Christie's. #230, 11/16/83.

**OPP.54:287**; PP.54:056; Z.XVI:158; PD.09:425p; UP.00:980





**Le peintre, le sculpteur et leur modèle.** Vallauris. 7-January/1954. Painted & glazed ceramic vase. 29,5 x 26,5 cm. Private collection.

**OPP.54:422**; MF.10\*:150-151p; TO.14\*:86

**Au bord de la mer III.** Vallauris. 7-January/1954. India ink on paper. 24 x 32 cm. Private collection.

**OPP.54:570**; PP.54:058; Z.XVI:156





**Bacchus et femme nue V.** Vallauris. 7-January/1954. India ink on paper. 24 x 32 cm. Private collection.

**OPP.54:571**; PP.54:060; Z.XVI:160

---

**Pichet peintre: Sculpteur et leur modèles.** Vallauris. 7-January/1954. Painted & partially glazed ceramic pitcher. 22,9 cm. Sotheby's. #242, N10945, 05/18/22.

**OPP.54:650**; NY.99c\*:36-37p;  
RH.96b\*:22p; VA.04\*:29; VA.90\*:29p;  
WA.15\*:n/a





**Abstraction géométrique.** Vallauris. 8-January/1954. Painted, incised & partially glazed ceramic; jug. 18 cm. Sotheby's. #132, L15007, 06/25/15.

**OPP.54:495**

---

**Le peintre au travail.** Vallauris. 9-January/1954. White earthenware pitcher. 38 x 24 x 14,2 cm. Museu de Ceràmica, Barcelona. (Inv MCB 64.661). Donation of the artist (04/1957).

**OPP.54:332**; JM.07\*:62; TO.14\*:87; TO.99\*:209





**Jeux de cirque.** Vallauris. 9-January/1954. Painted & glazed ceramic vase. 36 x 10,5 cm. Museu de Ceràmica, Barcelona. (Inv MCB 64.662).

**OPP.54:501**; DO.07\*:311

---

**L'âne savant III.** Vallauris. 10-January/1954. Pen, brush & India ink on paper. 23,8 x 31,8 cm. Christie's. #414, 6922, 06/24/04.

**OPP.54:154**; PP.54:064; Z.XVI:164; AH.13\*:145; DC.87:409; JB.65:112; LO.55a\*:43





**Femme assise et singe XV.** Vallauris. 10-January/1954. Brush & black ink on paper laid down on paper. [25 x 34] [24 x 32,2] 23,8 x 32 cm. Sotheby's. #130, N08547, 05/06/09. Formerly Christie's. #156, 1542, 11/04/04. Also Charles Engelhard Collection.

**OPP.54:162**; PP.54:076; Z.XVI:176; BS.55:230; KK.93:95; WC.62\*:53; WR.96:172p

---

**Au cirque II.** Vallauris. 10-January/1954. Pen and brush & ink on paper. [24 x 32] 23,9 x 32,1 cm. Sotheby's. #325, N09416, 11/06/15. Formerly Sotheby's. #356, N08127, 11/03/05.

**OPP.54:197**; PP.54:063; Z.XVI:163; DC.87:407





**Dans l'atelier XIV (pour Verve: Revue artistique et littéraire).** Vallauris. 10-January/1954. India ink on paper. 24 x 32 cm. Sotheby's. #197, L10005, 02/04/10.

**OPP.54:285**; PP.54:075; Z.XVI:175; BS.55:324p; BW.03:7; JB.65:120; JC.98:21p; JL.71:156p; KK.93:67; MF.10:13p; PD.09:425p; PD.69:58p; RP.81:23.4; TK.98a\*:21; UA.80:24p; UP.00:978; WR.96:172p

---

**Clowns et acrobates IV.** Vallauris. 10-January/1954. India ink. 24 x 33 cm. Private collection.

**OPP.54:342**; PP.54:065; Z.XVI:165; DA.80:37; JB.65:113





**Peintre et modèle XII.** Vallauris. 10-January/1954. Pen & India ink on paper. 23,8 x 31,9 cm. Christie's. #188, 2595, 11/08/12.

**OPP.54:379**; PP.54:073; Z.XVI:173

---

**Le peintre et son modèle VIII.** Vallauris. 10-January/1954. India ink on paper [Reproduced in *verve artistique et littéraire* vol. 9, no. 5.29/30, 09/54]. 24 x 32 cm. Private collection.

**OPP.54:396**; PP.54:069; Z.XVI:169; GU.00:165







**Le peintre et son modèle IX.** Vallauris. 10-January/1954. India ink on paper. 24 x 32 cm. Private collection. Courtesy Galería Guillermo de Osma, Madrid.

**OPP.54:414**; PP.54:070; Z.XVI:170; PE.01a\*:116

**Peintre et modèle V.** Vallauris. 10-January/1954. India ink on paper. 24 x 32 cm. Museum Folkwang, Essen. (Inv C 4/58). Acquired in 1958.

**OPP.54:478**; PP.54:066; Z.XVI:166





**Dans l'atelier I.** Vallauris. 10-January/1954.  
India ink on paper. 24 x 32 cm. Private collection.

**OPP.54:572**; PP.54:062; Z.XVI:162

---

**Modèle au bouquet VI.** Vallauris. 10-  
January/1954. India ink on paper. 24 x 32  
cm. Private collection.

**OPP.54:573**; PP.54:067; Z.XVI:167





**Peintre et modèle VII.** Vallauris. 10-January/1954. India ink on paper. 24 x 32 cm. Private collection.

**OPP.54:574**; PP.54:068; Z.XVI:168

**Peintre et modèle X.** Vallauris. 10-January/1954. India ink & wash on paper. 24 x 32,2 cm. The Israel Museum, Jerusalem. (Inv B99.0914). Bequest of Elisabeth Hirsch, California, to American Friends of the Israel Museum.

**OPP.54:575**; PP.54:071; Z.XVI:171;  
JR.16\*:n/a





**Dans l'atelier XIII.** Vallauris. 10-January/1954.  
India ink on paper. 24 x 32 cm. Private collection.

**OPP.54:576**; PP.54:074; Z.XVI:174

---

**Peintre et modèle étendu XVI.** Vallauris.  
10-January/1954. India ink on paper. 24 x  
32 cm. Private collection.

**OPP.54:577**; PP.54:077; Z.XVI:177





**Le vieux modèle XI.** Vallauris. 10-January/1954.  
India ink. 24 x 32 cm. Private collection.

**OPP.54:655**; PP.54:072; Z.XVI:172

---

**La source.** Vallauris. 11-January/1954. White earthenware pitcher, decoration in engobes, knife engraved on partial brushed glaze, painted in white, green & black patina, edition 100. 28 x 16,5 cm. Sotheby's. #166, W05710, 03/23/05. Also Jack Rutberg Fine Arts. 2007.

**OPP.54:176**; AR:225; CE.04\*:258; GR.74:721;  
LA.07\*:n/a; PM.10:88p





**Modèles posant (pour Verve: Revue artistique et littéraire).** Vallauris. 11-January/1954. India ink wash on paper. 24 x 32 cm. Private collection, New York.

**OPP.54:288**; PP.54:078; Z.XVI:178;  
JR.62\*:8.44; KK.93:59; PD.09:425p; UP.00:981

**Vase zoomorphe.** Vallauris. 11-January/1954. White earthenware pitcher, knife engraved & painted, decoration in black engobes. 35,5 x 30,5 x 19 cm. Musée Magnelli de la Céramique, Vallauris. On loan from Musée Picasso, Paris. Jacqueline Roque Picasso Collection. Dation 1990.

**OPP.54:309**; MPP:1990.371; CE.04\*:187;  
GR.90\*:152; LE.21\*:271; ND.01\*:118





**Pichet au vase.** Vallauris. 12-January/1954. White earthenware pitcher, decoration in engobes, under partial brushed glaze, engraved & black patina, painted in blue, yellow, white & black, edition 500. [30,8] 29,5 x 18,5 cm. Sotheby's. #457, N07717, 11/02/01.

**OPP.54:050**; AR:226; HK.14\*:106p

**Le peintre et son modèle I.** Vallauris. 14-January/1954. India ink on paper. 32 x 24 cm. Private collection.

**OPP.54:424**; PP.54:079; Z.XVI:180; HN.13:270p





**Dans l'atelier II.** Vallauris. 14-January/1954. India ink on paper. 24 x 32 cm. Private collection.

**OPP.54:578**; PP.54:080; Z.XVI:179; BS.55:321p

---

**Dans l'atelier III.** Vallauris. 14-January/1954. India ink on paper. 24 x 32 cm. Private collection.

**OPP.54:579**; PP.54:081; Z.XVI:181







**Dans l'atelier.** Vallauris. 15-January/1954.  
Charcoal. 23,8 x 32 cm. Kunstmuseum  
Liechtenstein, Vaduz.

**OPP.54:403**; PP.54:082; Z.XVI:182; GB.14\*:100;  
RM.07\*:110p

---

**Vases aux deux anses.** Vallauris. 15-  
January/1954. Painted & partially glazed  
terracotta vase. 30 cm. Christie's. #440,  
13488, 03/01/17.

**OPP.54:528**





**L'atelier III.** Vallauris. 17-January/1954. Brush & India ink on paper. 24 x 32 cm. Private collection, Riehen, Switzerland.

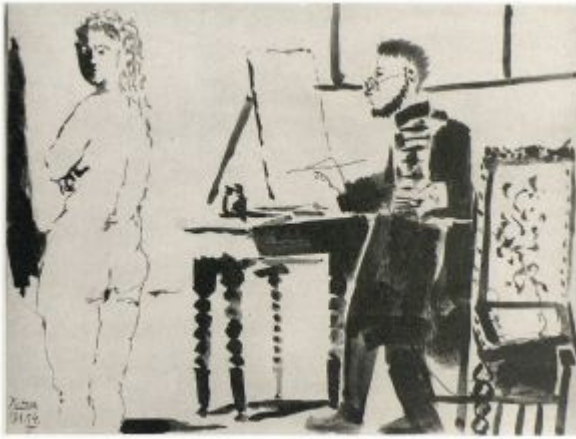
**OPP.54:242**; PP.54:085; Z.XVI:185; AH.13\*:146; BA.03a\*:345; KA.55\*:n/a; KK.93:57; TO.14\*:80

---

**Dans l'atelier I.** Vallauris. 17-January/1954. India ink on paper. [24 x 32] 23,8 x 31,8 cm. Private collection.

**OPP.54:281**; PP.54:083; Z.XVI:183; KK.93:55; WR.96:161p; WW.91:521p





**Dans l'atelier II.** Vallauris. 17-January/1954.  
India ink paper. 24 x 32 cm. Private collection.

**OPP.54:457**; PP.54:084; Z.XVI:184; KK.93:56

---

**Visite à l'atelier IV.** Vallauris. 17-  
January/1954. Brush & pen & black ink on  
paper. 24 x 31,8 cm. Christie's. #1008,  
12146, 11/17/16.

**OPP.54:513**; PP.54:086; Z.XVI:186;  
AB.57\*:106p; LO.70e\*:39; LO.74c\*:104;  
NY.69b\*:135p; NY.71b\*:68; PH.58\*:239





**Vases.** Vallauris. 18-January/1954. White clay decorated with engobe & partially glazed. 16,2 x 21,5 x 25,7 cm. Museu Picasso, Barcelona. Donation 1982.

**OPP.54:353**; MPB:112.452; MG.07a\*:n/a

---

**Visite a l'atelier VI.** Vallauris. 19-January/1954. India ink. 24 x 32 cm. Private collection. Formerly James Goodman Gallery, NY. 2005.

**OPP.54:198**; PP.54:092; Z.XVI:192; BS.55:338p; JL.71:156p; KK.93:70; PD.65:216p





**La femme peintre V.** Vallauris. 19-January/1954. Brush & India ink on paper. 24 x 32 cm. Private collection, Riehen, Switzerland.

**OPP.54:241**; PP.54:091; Z.XVI:191; AH.13\*:148; BA.03a\*:344; TO.14\*:81

---

**Dans l'atelier II.** Vallauris. 19-January/1954. Brush & India ink on paper. 24 x 32 cm. Private collection, Riehen, Switzerland.

**OPP.54:243**; PP.54:088; Z.XVI:188; AH.13\*:147; BA.03a\*:346; KK.93:65; TO.14\*:83; WS.93:48p





**Visite de l'atelier VII.** Vallauris. 19-  
January/1954. Colored pencil & India ink on paper.  
24 x 32 cm. Private collection.

**OPP.54:329**; PP.54:093; Z.XVI:193; KK.93:71;  
TG.88:11; WS.07:32p; WS.11:336p

---

**Modèle au vase I.** Vallauris. 19-  
January/1954. India ink on paper. 24 x  
32,1 cm. Sotheby's. #106, PF2357,  
10/13/23.

**OPP.54:458**; PP.54:087; Z.XVI:187;  
KK.93:58





**La femme peintre III.** Vallauris. 19-  
January/1954. India ink on paper. 24 x 32 cm.  
Private collection.

**OPP.54:460**; PP.54:089; Z.XVI:189; KK.93:68

---

**La femme peintre IV.** Vallauris. 19-  
January/1954. India ink on paper. 24 x 32  
cm. Private collection.

**OPP.54:461**; PP.54:090; Z.XVI:190;  
KK.93:69





**Femme peintre et modèle II.** Vallauris. 20-January/1954. Brush & India ink on paper. 23,8 x 31,2 cm. Sotheby's. #272, L11005, 02/09/11. Formerly Galeria Elvira Gonzalez. 2007; Christie's. #468, 9774, 11/07/01.

**OPP.54:043**; PP.54:095; Z.XVI:195; AH.13\*:150; KK.93:74; TO.14\*:85

---

**L'atelier de la femme peintre I.**

Vallauris. 20-January/1954. Brush & India ink on paper. 24 x 32 cm. Private collection, Riehen, Switzerland.

**OPP.54:244**; PP.54:094; Z.XVI:194; AH.13\*:149; BA.03a\*:347; KK.93:72; TO.14\*:82







**Femme peintre et modèle IV.** Vallauris. 20-January/1954. India ink on paper. 24 x 32 cm. Private collection.

**OPP.54:462**; PP.54:097; Z.XVI:197; KK.93:73

---

**Femme peintre et modèle III.** Vallauris. 20-January/1954. India ink on paper. 24 x 32 cm. Private collection.

**OPP.54:463**; PP.54:096; Z.XVI:196; KK.93:75





**Dans l'atelier VI.** Vallauris. 20-January/1954.  
India ink on paper. 24 x 32 cm. Private collection.

**OPP.54:464**; PP.54:099; Z.XVI:199; KK.93:76

---

**Édouard Pignon quittant Vallauris avec  
ses poteries.** Vallauris. 20-January/1954.  
India ink & wash on paper. 23,7 x 32,2 cm.  
Christie's. #232, 13664, 03/23/17.

**OPP.54:529**





**Femme peintre et modèle V.** Vallauris. 20-January/1954. India ink on paper. 24 x 32,1 cm. Sotheby's. #105, PF2357, 10/13/23.

**OPP.54:580**; PP.54:098; Z.XVI:198

---

**Feuille d'etudes.** Vallauris. 21-January/1954. [Pen, ink &] wash on paper. [24 x 32] 23,5 x 31,8 cm. Sotheby's. #190, L02008, 06/25/02. Formerly Private Collection, Riehen, Switzerland.

**OPP.54:195**; PP.54:103; Z.XVI:203;  
AH.13\*:151; BA.03a\*:348; TG.88:15;  
UP.00:976





**L'atelier I.** Vallauris. 21-January/1954. India ink wash on paper. [24 x 32] 23,5 x 31 cm. Eleanore and Daniel Saidenberg Collection, NY.

**OPP.54:274**; PP.54:100; Z.XVI:200;  
JR.62\*:8.45; KG.71:137; KG.85:137; KK.93:77;  
TG.88\*:76; UP.00:982; WR.80\*:422p

**Les modèles III.** Vallauris. 21-January/1954. Brush & pen & black ink on paper. 24 x 32 cm. Christie's. #1013, 3784, 11/13/15. Formerly Arthur and Anita Kahn Collection, New York.

**OPP.54:362**; PP.54:102; Z.XVI:202;  
DA.80:38; JL.67b:88p; LO.70e\*:38





**Intérieur II.** Vallauris. 21-January/1954. Wash.  
24 x 32 cm. Private collection.

**OPP.54:581**; PP.54:101; Z.XVI:201

---

**Dans l'atelier.** Vallauris. 22-January/1954.  
India ink, partly washed, on paper. 24 x 32  
cm. Museum Ludwig, Köln. (Inv ML/Z  
2001/060). Schenkung 2001. Formerly  
Galerie Beyeler, Basel.

**OPP.54:339**; PP.54:104; Z.XVI:204;  
PE.01a\*:117; WO.92\*:66





**Colombe de la paix.** Vallauris. 22-January/1954. Glazed ceramic plate. 32,2 cm. Christie's. #27, 57971, 06/15/18. Formerly Christie's. #221, 10393, 02/06/15.

**OPP.54:489**

**Peintre et modèle IV.** Vallauris. 23-January/1954. India ink on paper. 24 x 32 cm. Private collection, Riehen, Switzerland.

**OPP.54:246;** PP.54:108; Z.XVI:208; AH.13\*:152; BA.03a\*:349; KK.93:98; TO.14\*:84





**Les danseurs VIII.** Vallauris. 23-January/1954.  
India ink. 24 x 32 cm. Private collection.

**OPP.54:249**; BA.03a\*:354

---

**Femme, peintre et modèle.** Vallauris.  
23-January/1954. Ink & ink wash on paper.  
24 x 32 cm. Sotheby's. #153, N08676,  
11/03/10.

**OPP.54:320**; PP.54:105; Z.XVI:205





**Grotesques XI.** Vallauris. 23-January/1954. India ink on paper. 23,9 x 32,5 cm. Sotheby's. #24, PF1306, 06/06/13.

**OPP.54:408**; PP.54:114; Z.XVI:214; KK.93:104

**Au cirque V.** Vallauris. 23-January/1954. Ink wash on paper. 24 x 32 cm. Private collection.

**OPP.54:470**; PP.54:109; Z.XVI:209; KK.93:99







**La danse VI.** Vallauris. 23-January/1954. India ink on paper. 24 x 32 cm. Private collection.

**OPP.54:471**; PP.54:110; Z.XVI:210; KK.93:100

---

**La danse VII.** Vallauris. 23-January/1954. India ink on paper. 24 x 32 cm. Private collection.

**OPP.54:472**; PP.54:111; Z.XVI:211; KK.93:101





**Les grotesques IX.** Vallauris. 23-January/1954.  
Ink wash on paper. 24 x 32 cm. Private collection.

**OPP.54:473**; PP.54:112; Z.XVI:212; KK.93:102

---

**Grotesques X.** Vallauris. 23-  
January/1954. Ink wash on paper. 24 x 32  
cm. The Israel Museum, Jerusalem. (Inv  
B67.0220). Gift of Jan and Ellen Mitchell,  
New York, through the America-Israel  
Cultural Foundation.

**OPP.54:474**; PP.54:113; Z.XVI:213;  
JR.16\*:n/a; KK.93:103





**Peintre et modèle II.** Vallauris. 23-January/1954. Wash. 24 x 32 cm. Private collection.

**OPP.54:582**; PP.54:106; Z.XVI:206

**Le singe peintre III.** Vallauris. 23-January/1954. Wash. 24 x 32 cm. Private collection.

**OPP.54:583**; PP.54:107; Z.XVI:207





**Les masques VIII.** Vallauris. 24-January/1954. Brush & India ink on paper. 24 x 32 cm. Private collection, Riehen, Switzerland. Christie's. #396, 6593, 06/27/02. Formerly Sotheby's #L410, 03/27/85.

**OPP.54:059**; PP.54:122; Z.XVI:222; AH.13\*:153; BA.03a\*:350; GE.63a\*:n/a; KK.93:107; PG.88:413

---

**Le masque dessin.** Vallauris. 24-January/1954. Ink on paper. 24,1 x 31 [24 x 32] cm. Gerhard Wurzer Gallery. 2005.

**OPP.54:199**; PP.54:115; Z.XVI:215





**Les masques IX.** Vallauris. 24-January/1954.  
Brush & India ink on paper. 24 x 32 cm. Private  
collection, Riehen, Switzerland.

**OPP.54:247**; PP.54:123; Z.XVI:223; AH.13\*:154;  
BA.03a\*:351; WC.62\*:54

---

**Grotesques et singe II.** Vallauris. 24-  
January/1954. Wash. 24 x 32 cm.  
Nationalmuseum, Stockholm.

**OPP.54:343**; PP.54:116; Z.XVI:216;  
JB.65:114; KG.71:270; KG.85:270





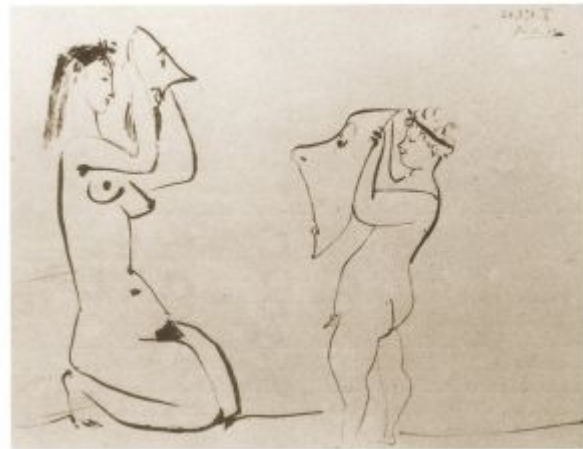
**Deux nus avec masques III.** Vallauris. 24-January/1954. Pen & India ink on ivory color paper. 24 x 32 cm. Staatsgalerie Stuttgart. (Inv X 57/699). Graphische Sammlung.

**OPP.54:404**; PP.54:117; Z.XVI:217;  
GM.81\*:298; RM.07\*:117p

---

**Les masques V.** Vallauris. 24-January/1954. Ink wash on paper. 24 x 32 cm. Private collection.

**OPP.54:475**; PP.54:119; Z.XVI:219;  
KK.93:106





**Deux personnages IV.** Vallauris. 24-January/1954. India in on paper. [24 x 32] 23,9 x 32,4 cm. Sotheby's. #72, PF2346, 10/20/23.

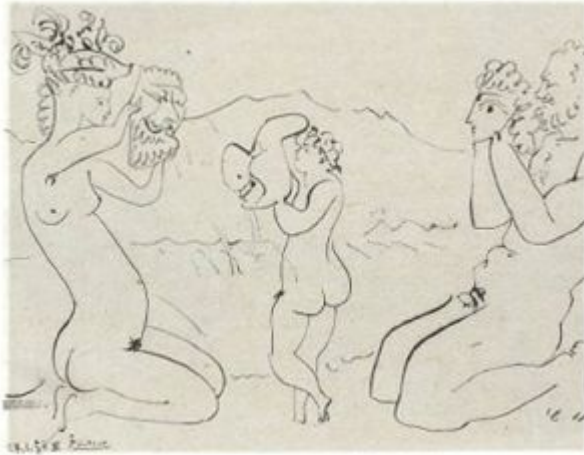
**OPP.54:584**; PP.54:118; Z.XVI:218

---

**Les masques VI.** Vallauris. 24-January/1954. Wash. 24 x 32 cm. Private collection.

**OPP.54:585**; PP.54:120; Z.XVI:220





**Les masques VII.** Vallauris. 24-January/1954.  
India ink on paper. 24 x 32 cm. Private collection.

**OPP.54:586**; PP.54:121; Z.XVI:221

**Les masques I (pour Verve: Revue  
artistique et littéraire).** Vallauris. 25-  
January/1954. Wash on paper. 24 x 32 cm.  
Private collection.

**OPP.54:286**; PP.54:124; Z.XVI:224;  
JB.65:115; JL.71:157p; JR.91:4p;  
KK.93:108; PD.09:425p; TG.88:13;  
UP.00:979; YP.13:138p







**Le singe et le masque II.** Vallauris. 25-January/1954. Wash. 24 x 32 cm. Private collection.

**OPP.54:344**; PP.54:125; Z.XVI:225; DT.78:80; JB.65:116; KK.93:109; PD.69:59p



**Le clown au masque III.** Vallauris. 25-January/1954. Ink. [24 x 32] 24,1 x 31,8 cm. Mr. and Mrs. Harold Hecht Collection.

**OPP.54:352**; PP.54:126; Z.XVI:226; DK.61\*:105; KK.93:110



**Les coulisses du cirque IV.** Vallauris. 25-January/1954. Brush & India ink on paper. [24] 23,8 x 32 cm. Christie's. #1012, 3784, 11/13/15. Formerly Arthur and Anita Kahn Collection, New York.

**OPP.54:476**; PP.54:127; Z.XVI:227; KK.93:111

**Le singe et la pomme.** Vallauris. 26-January/1954. [Watercolor] Gouache & India ink on paper. [23,9 x 31,9] 24 x 32 cm. Emil G. Bührle Foundation Collection, Zürich.

**OPP.54:280**; PP.54:128; Z.XVI:229; CP.95:170p; GC.96:263p; JB.65:119; JL.67b:90-91p; KB.01\*:146; KK.93:112; TG.88\*:77; UP.00:983; WR.80\*:422p; WS.93\*:107





**Nu et homme II.** Vallauris. 27-January/1954.  
Colored crayons on paper. 24 x 32 cm. Sotheby's.  
#235, L03005, 06/24/03.

**OPP.54:136**

**Deux personnages II.** Vallauris. 27-  
January/1954. Color pencil. 23,5 x 32,5  
cm. Private collection.

**OPP.54:248**; BA.03a\*:352





**La rêveuse XIII.** Vallauris. 27-January/1954.  
Colored pencils on paper. 23,5 x 32 cm. Catherine  
Hutin-Blay Collection, Paris. Formerly Jacqueline  
Roque Picasso Collection.

**OPP.54:294**; BA.90a\*:56; LE.07\*:70;  
MA.91a\*:71; PD.19\*:5

---

**Clown et femme nue V.** Vallauris. 27-  
January/1954. Crayons. 24 x 32 cm.  
Private collection.

**OPP.54:319**; PP.54:132; Z.XVI:232





**Deux personnages XIV.** Vallauris. 27-January/1954. Colored crayon on paper. 24 x 32 cm. Est-Ouest Auctions Co. Ltd. Tokyo. #75, 11/26/10.

**OPP.54:322**; PP.54:130; Z.XVI:230; BS.55:502p; JL.71:157p; KK.93:113; PD.69:60p

---

**Peintre barbu et modèle I.** Vallauris. 27-January/1954. Chalk & ballpoint pen on paper. 24,3 x 31,2 cm. Private collection, Switzerland.

**OPP.54:438**; PP.54:129; Z.XVI:228; GB.14\*:101





**Deux personnages.** Vallauris. 27-January/1954.  
Color pencil & wash on paper. 23,5 x 32 cm.  
Private collection.

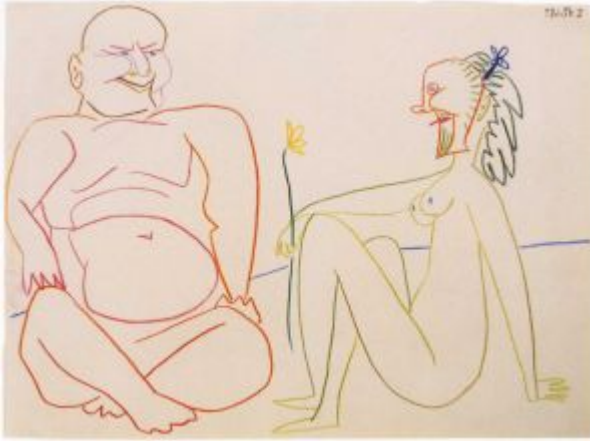
**OPP.54:532**; MG.04b\*:104

---

**Clown et femme nue V.** Vallauris. Post-  
27-January/1954. Color lithograph [After  
*Clown et femme nue V*]. 23,7 x 31,8 cm.  
Christie's. #147, 7839, 03/31/10.

**OPP.54:375**





**Deux personnages II.** Vallauris. 28-January/1954. Colored crayon on paper. [23,5 x 32] 23,8 x 31,7 cm. Christie's. #416, 6922, 06/24/04. Formerly Marina Picasso Collection. (Inv 5601).

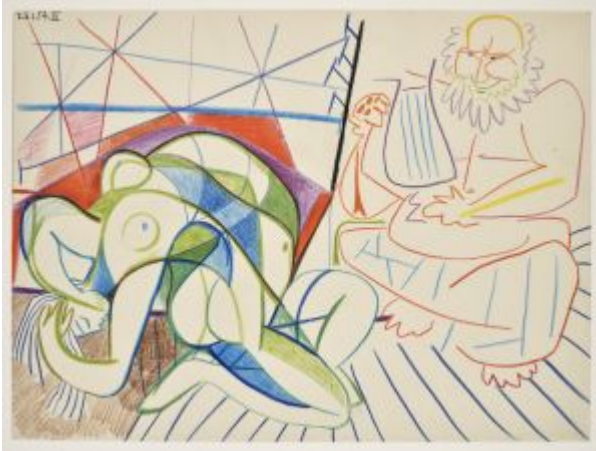
**OPP.54:153**; BA.03a\*:353; JR.93\*:88

**Danseuse et vieillard musicien III.**

Vallauris. 28-January/1954. Color pencils on wove drawing paper. 24 x 32 cm. Musée Picasso, Paris. Dation 1979.

**OPP.54:250**; MPP:1417; PP.54:130a;  
BA.03a\*:355; PE.17\*:140p





**Danseuse et vieillard musicien IV.** Vallauris. 28-January/1954. Color pencil on paper. 24 x 32 cm. Musée Picasso, Paris. Dation 1979.

**OPP.54:251**; MPP:1418; PP.54:130b;  
BA.03a\*:356; PA.20j\*:148; PE.17\*:141p

---

**Personnages observant une danseuse nue I.** Vallauris. 28-January/1954. Color pencil. 23,5 x 32 cm. Private collection.

**OPP.54:252**; BA.03a\*:357







**Femme et enfant VII.** Vallauris. 29-January/1954. Color pencil. 23,5 x 32 cm. Private collection.

**OPP.54:253**; BA.03a\*:358; LE.07\*:71

**Danseuse et guitariste VI.** Vallauris. 29-January/1954. Color pencils on wove drawing paper. 24 x 32 cm. Musée Picasso, Paris. Dation 1979.

**OPP.54:308**; MPP:1419; PP.54:130c; PA.20j\*:147; PE.17\*:140p





**Deux personnages III.** Vallauris. 29-January/1954. Crayons on paper. 24 x 32 cm. Private collection.

**OPP.54:400**; PP.54:131; Z.XVI:231

**Au cirque IV.** Vallauris. 29-January/1954. Color pencils on paper. 23,5 x 32 cm. Private collection.

**OPP.54:533**; MG.04b\*:105





**Picador.** Vallauris. 30-January/1954. White earthenware round cupel, engraving accentuated with oxidized paraffin, glaze bath, black enamel underside, painted in ivory, brown, green & bronze-colored black, edition 100. 18 cm. Christie's. #79, 2391, 05/29/01.

**OPP.54:039**; AR:227; B.III:46

---

**Taureau.** Vallauris. 30-January/1954. White earthenware round cupel, engraving accentuated with oxidized paraffin, glaze bath, black enamel underside, painted in ivory, brown, green & bronze-colored black, edition 100. [18,4] 18 cm. Christie's. #422, 1412, 09/28/04.

**OPP.54:040**; AR:234; B.III:48





**Tête de taureau.** Vallauris. 30-January/1954.  
Partially glazed ceramic bowl. 17,8 cm. Christie's.  
#246, 6434, 06/24/11.

**OPP.54:143**; AR:232

**Taureau.** Vallauris. 30-January/1954.  
Terracotta bowl, in engobes, edition 100.  
18 cm. Artcurial. #390, 1131, 10/22/07.

**OPP.54:278**; AR:235





**Taureau.** Vallauris. 30-January/1954. Red earthenware bowl partially glazed in black enamel. 17,5 cm. Christie's. #206, 2864, 04/24/11.

**OPP.54:346**; AR:233

**Picador.** Vallauris. 30-January/1954. White earthenware bowl decorated with engobes under glaze. 18 cm. Christie's. #207, 2864, 05/24/11.

**OPP.54:347**; AR:229; GR.74:298





**Tête de taureau.** Vallauris. 30-January/1954. Red earthenware bowl partially glazed in black enamel,. 18 cm. Christie's. #205, 2864, 05/24/11.

**OPP.54:348**; AR:231

---

**Tête de taureau.** Vallauris. 30-January/1954. Partially glazed ceramic bowl. 17,7 cm. Christie's. #288, 4232, 06/25-26/12.

**OPP.54:366**; AR:230; B.III:47





**Picador.** Vallauris. 30-January/1954. Partially glazed terracotta bowl. 17,3 cm. Christie's. #278, 4232, 06/25-26/12.

**OPP.54:367**; AR:228

---

**Clown et acrobate I.** Vallauris. 30-January/1954. Colored crayons on papers. 24 x 32 cm. Private collection.

**OPP.54:401**; PP.54:133; Z.XVI:233; KK.93:115





**Clown et écuyère III.** Vallauris. 30-January/1954. Crayons on paper. 24 x 32 cm. Private collection.

**OPP.54:402**; PP.54:135; Z.XVI:235

**Au cirque II.** Vallauris. 30-January/1954. Colored crayon on paper. 24 x 32 cm. Private collection.

**OPP.54:428**; PP.54:134; Z.XVI:234







**Tête de taureau.** Vallauris. 30-January/1954. Painted & glazed ceramic bowl. 17,7 cm. Sotheby's. #680, L16005, 02/05/16. Formerly Marina Picasso Collection.

**OPP.54:510**

---

**La répétition II.** Vallauris. 31-January/1954. Colored crayons on paper. [24 x 32] 23,8 x 32 cm. Christie's. #190, 15909, 10/18/18. Formerly Sotheby's. #337, 06/23/93.

**OPP.54:123**; PP.54:136; Z.XVI:236; KK.93:116





**Au cirque VII.** Vallauris. 31-January/1954.  
Colored crayon on paper. 24 x 32 cm. Sotheby's.  
#444A, N08197, 05/04/06.

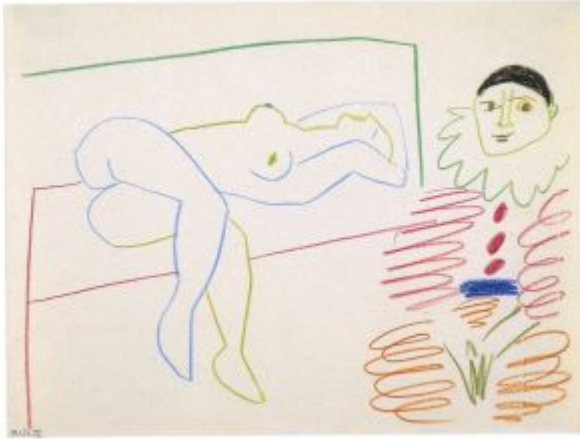
**OPP.54:220**; PP.54:137; Z.XVI:237; KK.93:117

---

**Personnages masqués V.** Vallauris. 31-  
January/1954. Color pencil. 23,5 x 32 cm.  
Private collection.

**OPP.54:255**; BA.03a\*:359





**Clown et femme étendue IV.** Vallauris. 31-January/1931. Color pencils on paper. 23,5 x 32 cm. Private collection.

**OPP.54:534**; MG.04b\*:106

**Personnages déguisés.** Vallauris. 31-January/1954. Colored crayons [OiC]. 23,5 x 32 cm. Private collection. Formerly Sotheby's. #419A, 03/27/85.

**OPP.54:653**; PP.54:136a





**Le peintre masqué et son modèle II.** Vallauris. 1-February/1954. Color pencil [crayons]. 24 x 32 cm. Musée Picasso, Paris. Dation 1979.

**OPP.54:256**; MPP:1420; PP.54:138a; BA.03a\*:361

---

**Le chevalier et la dame nue I.** Vallauris. 1-February/1954. Colored pencil on paper. 24 x 32 cm. Private collection.

**OPP.54:454**; PP.54:138; Z.XVI:238; KK.93:118



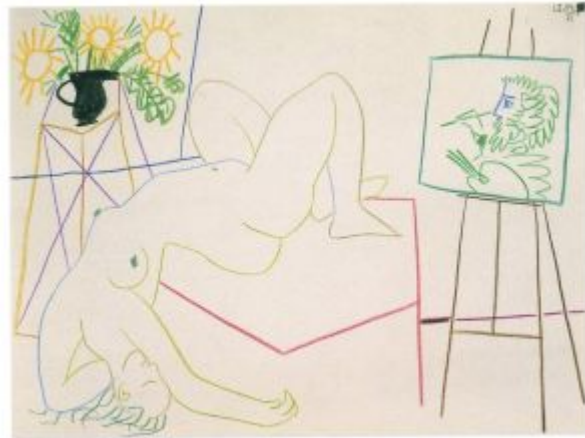


**Vase positif négatif.** Vallauris. 1-February/1954. Painted & partially glazed ceramic; large jug with cut out vase. 36 cm. Sotheby's. #133, L15007, 06/25/15.

**OPP.54:496**; MG.07a\*:12

**Peintre et son modèle IV.** Vallauris. 1-February/1954. Coloe pencils on paper. 23,5 x 32 cm. Private collection.

**OPP.54:535**; CG.04\*:75; MG.04b\*:107





**La répétition II (pour Verve: Revue artistique et littéraire).** Vallauris. Post-31-January/1954. Lithograph version of original crayon [After *La répétition II*]. 26,2 x 35,4 cm. Christie's. #97, 9639, 06/03/03.

**OPP.54:134**

**Le modèle dans l'atelier.** Vallauris. 2-February/1954. Color pencils on on wove drawing paper. 24 x 32 cm. Musée Picasso, Paris. Dation 1979.

**OPP.54:330**; MPP:1422; PP.54:138b; MF.01\*:37; MF.10:202p; PE.17\*:139p; RU.17:113p; TO.99\*:104





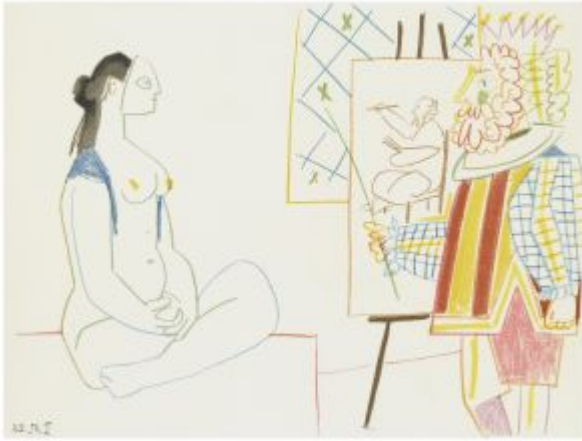
**Affiche Suite de 180 Dessins de Picasso.** [Paris]. [29~30-November/1953~] 3-February/1954. Lithograph in color on wove paper, edition 1000. 60,9 x 39,9 cm. Christie's. #79, 1259, 07/23/03.

**OPP.54:137**; AH.13:50; TO.04:53p; YP.13\*:61

**Dans l'atelier I.** Vallauris. 3-February/1954. Color pencil & ink wash on glued paper. 24 x 32 cm. Daniel Malingue Collection, Paris.

**OPP.54:254**; PP.54:139; Z.XVI:239; BA.03a\*:360; KK.93:119; MF.10\*:203p; PE.01a\*:118





**Dans l'atelier II.** Vallauris. 3-February/1954.  
Color crayons on paper. 24 x 32 cm. Private collection.

**OPP.54:455**; PP.54:140; Z.XVI:240; KK.93:120

**Dans l'atelier III.** Vallauris. 3-February/1954. Ink wash on paper. 24 x 32 cm. Private collection.

**OPP.54:477**; PP.54:141; Z.XVI:241;  
KK.93:121







**Pichet à lampe (Visage découpé).** Vallauris. 5-February/1954. White earthenware ceramic pitcher, partially engraved, with colored engobe, black oxide & glaze. 36,4 cm. Christie's. #400, 15006, 11/14/17.

**OPP.54:537**; PA.58c\*:130; YM.86\*:CM-13

**La femme au singe.** Vallauris. 7-February/1954. Lithograph on wove paper. 24,8 x 32,1 cm. Werner-Coninx-Stiftung, Zürich. Also Christie's. #234, 1322, 04/28/03.

**OPP.54:065**; B.I:747; M:243; BF.14:65p; MD.02\*:341p; TO.99\*:105





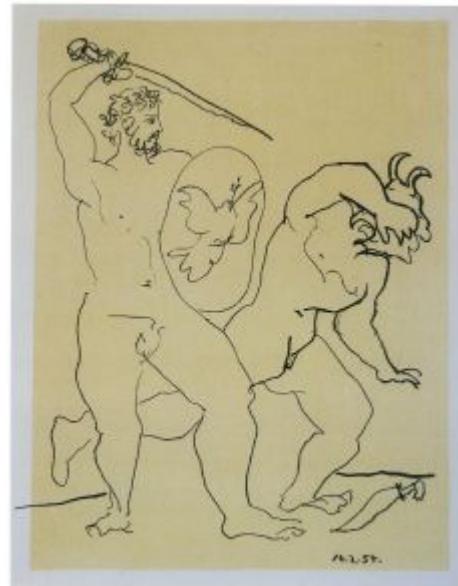
**Cruche avec manche.** Vallauris. 10-February/1954. Ceramic. 31,5 x 12,5 cm. Museu Picasso, Barcelona.

**OPP.54:002**; MPB:64.664; CR.74:1026; TO.99\*:210

---

**La guerre et la paix (Claude Roy, La guerre et la paix).** Vallauris. 10-February/1954. Lithograph on Arches, edition 100. [30,6 x 23,5] 39,7 x 29,3 cm. Kunstmuseum Heidenheim. Also The Museum of Modern Art, NYC. (Inv 1005.1964). The Louis E. Stern Collection.

**OPP.54:036**; B.I:748; GC:67; M:245; LU.93:363; PM.10:56p; RM.07\*:70p





**Le modèle étendu.** Vallauris. 11~12-February/1954. Lithograph in black & ochre on wove paper. 22,2 x 32,1 cm. Staatsgalerie Stuttgart. Graphische Sammlung. Also Christie's. #235, 1322, 04/28/03.

**OPP.54:131**; B.I:749; M:244; GM.81\*:299; RM.07\*:114p

**Danses.** Vallauris. 13-February/1954. Lithograph, edition 50. [48 x 64] [50 x 65] 50,5 x 65,7 cm. Christie's. #161, 9632, 04/25/01.

**OPP.54:037**; B.I:750; M:246; BS.55:231; DC.87:413; DT.78:82; JM.07\*:42





**Le jeu du taureau.** Vallauris. 14-February/1954.  
Lithograph on Arches, edition 34/50. 50,2 x 65,4  
cm. Christie's. #243, 6399, 12/05/00. Also Museu  
Picasso, Barcelona; Musée Picasso, Antibes.

**OPP.54:035**; B.I:751; M:247; MPA:2001.1.2;  
MPB:70.196; GG.87:26p; MG.10a\*:40;  
MG.15\*:57; PD.69:62p

---

**Portrait d'homme (Denis Diderot, Mystification ou  
Histoire des Portraits).** Vallauris. 14-February/1954.  
Lithograph. 28,4 x 19,5 cm. Musée Picasso, Paris. (Inv  
BIB2851). Also Christie's. #246, 1039, 12/11/01.

**OPP.54:045**





**La danse des banderilles II.** Vallauris. 14-February/1954. Lithograph on Arches, edition 50. 49,8 x 65,2 cm. Tate Modern, London. (Inv P11367). Bequeathed by Elly Kahnweiler 1991 to form part of the gift of Gustav and Elly Kahnweiler, accessioned 1994. Also Museu Picasso, Barcelona; Christie's. #5, 6683, 10/09/02.

**OPP.54:061**; B.I:752; M:248; MPB:70.195; BS.55:339p; DC.87:411; DQ.74:212p; DT.78:81; EM.55:249p; GG.87:26p; MG.10a\*:41; ON.66:40p; PG.80:6

---

**Portrait d'un auteur III.** Vallauris. 14-February/1954. India ink. 27 x 21 cm. Private collection.

**OPP.54:258**; BA.03a\*:364





**Portrait d'homme II (Denis Diderot, Mystification ou Histoire des Portraits).** Vallauris. 14-February/1954. Lithograph. 28,4 x 19,5 cm. Musée Picasso, Paris. (Inv BIB2851).

**OPP.54:546**

**La famille du saltimbanque.** Vallauris. 16-February/1954. Lithograph, edition 50. 49,8 x 65,3 cm. Christie's. #224, 9512, 10/31/00.

**OPP.54:031;** B.I:753; M:249;  
MPA:1981.6.20; DC.87:410; WC.62\*:58;  
WS.95a\*:153





**Les trois femmes et le torero.** Vallauris. 17-February/1954. Lithograph, edition 50. 50,2 x 65,1 cm. Christie's. #225, 9512, 10/31/00. Also Museu Picasso, Barcelona.

**OPP.54:032**; B.I:755; M:251; MPA:1981.6.22; MPB:70.193; GG.87:26p; MG.10a\*:42; WC.62\*:57

**Troupe d'acteurs.** Vallauris. 17-February/1954. Lithograph on Arches. 50,1 x 65,7 cm. Christie's. #241, 1322, 04/28/03.

**OPP.54:125**; B.I:754; M:250; MPA:1981.6.21; DC.87:412; WC.62\*:59





**La répétition.** Vallauris. 21~26-February/1954.  
Lithograph on Arches, edition 50. 50,3 x 65,4 cm.  
Christie's. #243, 1138, 11/05/02.

**OPP.54:063**; B.I:756; M:252; MPA:1981.6.23;  
BS.55:336p; DC.87:397; WC.62\*:60

**La citronnade.** Vallauris. 24-February/1954. Oil on  
canvas. 72,7 x 59,7 cm. Sotheby's. #45, N08850,  
05/02/12. Formerly Justin K. Thannhauser Collection.

**OPP.54:363**; PP.54:142; Z.XVI:248; BN.78\*:52;  
NY.65b\*:n/a







**Nu couché endormi.** Vallauris. 28-February/1954. Black crayon on paper. 18 x 24,5 cm. Sotheby's. #306, L13004, 02/06/13. Formerly Vincenzo Denaro Collection.

**OPP.54:292**

---

**Nu couché endormi V.** Vallauris. 28-February/1954. Pencil on paper. 24 x 32,3 cm. Christie's. #242, 7832, 02/03/10. Formerly Marina Picasso Collection.

**OPP.54:310**; PP.54:147; Z.XVI:246; NY.83b\*:69; NY.85f\*:28





**Nu couché endormi VI.** Cannes. 28-February/1954. Pencil on paper. 23,6 x 31,6 cm. Sotheby's. #572, L16005, 02/05/16. Formerly Marina Picasso Collection. (Inv 5632).

**OPP.54:412**; PP.54:148; Z.XVI:247; FB.13\*:n/a; PD.02\*:107

---

**Nu couché endormi VII.** Vallauris. 28-February/1954. Pencil on paper. 24 x 32 cm. Marina Picasso Collection. (Inv 005633). Courtesy Galerie Jan Krugier, Geneva.

**OPP.54:430**; PP.54:149; Z.XVI:249; FB.13\*:17p; LS.75:125; PD.02\*:106; SG.88:160p





**Nu couché endormi III.** Cannes. 28-February/1954. Pencil on paper. [20,7 x 26,7] 20,9 x 26,6 cm. Sotheby's. #72, N09727, 05/18/17. Formerly Marina Picasso Collection.

**OPP.54:437**; PP.54:145; Z.XVI:244; FB.13\*:n/a

---

**Nu couché endormi I.** Vallauris. 28-February/1954. Pencil on paper. 21 x 27 cm. Sotheby's. #273, L21004, 03/19-26/21. Formerly Marina Picasso Collection.

**OPP.54:587**; PP.54:143; Z.XVI:242





**Nu couché endormi II.** Vallauris. 28-February/1954. Pencil on paper. [21 x 27] 20,8 x 26,8 cm. Sotheby's. #21, L20010, 06/18/20. Formerly Marina Picasso Collection.

**OPP.54:588**; PP.54:144; Z.XVI:243

---

**Nu couché endormi IV.** Vallauris. 28-February/1954. Graphite on paper. 21 x 27 cm. Private collection.

**OPP.54:589**; PP.54:146; Z.XVI:245



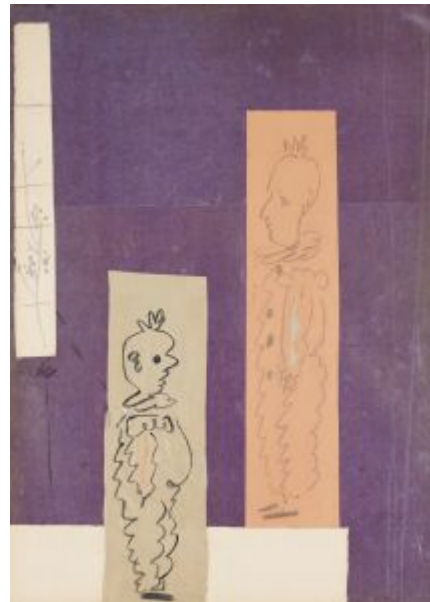


**Danseuse (Boris Kochno, Le ballet).** Vallauris. March/1954. Lithograph. 16 x 29 cm. Kunstmuseum Basel. (Inv 1955.55). Kupferstichkabinett, Purchase, 1955. Also Christie's. #250, 1322, 04/28/03.

**OPP.54:003**; B.I:767; GC:68; M:259

**Trois dessins collés au dos d'une affiche.** Vallauris. [March]/1954. Collage, brush & ink & pencil on paper affixed to the reverse of the artist's poster. 75,2 x 54,5 cm. Sotheby's. #667, L16005, 02/05/16. Formerly Marina Picasso Collection.

**OPP.54:507**





**Portrait de femme à la robe vert jaune.** Paris. 2-March/1954. Oil on canvas. 91 x 73 cm. Private collection.

**OPP.54:179**; JR.10\*:193p

**Portrait-charge de Jaume Sabartès.** Vallauris. 4-March/1954. Black ink on obverse of book. 32 x 24,5 cm. Musée Picasso, Paris. Cession de la Direction Générale des Douanes et droits indirects, 1981.

**OPP.54:307**; MPP:1982.1; PP.54:149a





**Pots avec fleurs.** Vallauris. 6-March/1954. Graphite on paper. 27 x 21 cm. Private collection.

**OPP.54:590**; PP.54:150; Z.XVI:250

**La coiffure.** Vallauris. 7-March/1954. Oil on canvas. 130 x 97 cm. Museum Sammlung Rosengart, Luzern. Siegfried & Angela Rosengart Collection.

**OPP.54:201**; PP.54:151; Z.XVI:262; AT.84:28;  
DW.05:85p; GR.71:12; JB.65:13; JL.71:73p; LF.00:2.16;  
LS.75:161; MM.67:65; RP.60\*:192; RP.81:24.7;  
UP.00:989; WW.91:521p





**Nu assis se coiffant IV.** Vallauris. 7-March/1954. Pencil on paper. 31,5 x 23,6 cm. Musée Picasso, Paris. Dation 1979.

**OPP.54:303**; MPP:1426; PP.54:155; Z.XVI:254; LS.75:160

---

**Nu assis se coiffant III.** Vallauris. 7-March/1954. Pencil on paper. 31,5 x 23,5 cm. Musée Picasso, Paris. Dation 1979.

**OPP.54:304**; MPP:1425; PP.54:154; Z.XVI:253







**Nu assis se coiffant II.** Vallauris. 7-March/1954. Pencil on paper. 31,5 x 23,5 cm. Musée Picasso, Paris. Dation 1979.

**OPP.54:305**; MPP:1424; PP.54:153; Z.XVI:252

---

**Nu assis se coiffant I.** Vallauris. 7-March/1954. Graphite stick & stump on paper. 31,4 x 23,6 cm. Musée Picasso, Paris.

**OPP.54:306**; MPP:1423; PP.54:152; Z.XVI:251;  
JC.01a\*:203





**Paysage.** Vallauris. 10-March/1954. India ink & color pencil on paper [OIC]. 24 x 32 cm. Private collection.

**OPP.54:591**; PP.54:156; Z.XVI:255

---

**Personnages et colombe.** Vallauris. 13-March/1954. Lithograph on Arches wove paper, edition 50. [49,5 x 65] [50 x 65] 50,5 x 65 cm. Christie's. #245, 1322, 04/28/03.

**OPP.54:127**; B.I:758; M:254; BS.55:278; FM.07\*:n/a; LV.06\*:n/a; WC.62\*:62





**Le modèle et deux personnages.** Vallauris. 14-March/1954. Lithograph in colors on Arches. 50,5 x 71,8 cm. Christie's. #249, 1322, 04/28/03.

**OPP.54:129**; B.I:759; M:258; MPA:1981.6.25; BS.55:507p; MF.10\*:204p; WC.62\*:65

---

**L'atelier du vieux peintre.** Vallauris. 14-March/1954. Lithograph in colors on Arches. [33,2 x 53,2] 50,2 x 66,2 cm. Christie's. #251, 1322, 04/28/03. Also Yale University Art Gallery. (Inv 1969.60.4). Gift of Mr. and Mrs. Walter Bareiss, B.S. 1940s.

**OPP.54:132**; B.I:760; M:260; HK.65:154p; MF.10\*:204p; MG.18\*:113p; SF.09\*:29





**La présentation III.** Vallauris. 17-March/1954. India ink on paper. [32 x 23,5] 31,8 x 23,9 cm. Musée National d'Art Moderne, Centre Georges Pompidou, Paris. (Inv AM1984-649), Donation Louise et Michel Leiris, 1984, no 170.

**OPP.54:203**; PP.54:159a

---

**Le peintre et son modèle IV.** Vallauris. 17-March/1954. Pencil on sketchbook page. 31 x 24 cm. Private collection.

**OPP.54:259**; PP.54:159; Z.XVI:259; BA.03a\*:365





**Nu se coiffant I.** Vallauris. 17-March/1954. Pen & India ink on paper. 32 x 23,9 cm. Musée Picasso, Paris.

**OPP.54:302**; MPP:1427; PP.54:157; Z.XVI:256; CK.04\*:112; JC.01a\*:204



**Nu se coiffant et études II.** Vallauris. 17-March/1954. India ink on paper. 32 x 24 cm. Private collection.

**OPP.54:592**; PP.54:158; Z.XVI:257



**La pose nue.** Vallauris. 18-March/1954. Lithograph. [63,5 x 49,8] [54,3 x 37,8] 55,2 x 37,8 cm. The Museum of Modern Art, NYC. (Inv 373.1955). Curt Valentin Bequest. Also Yale University Art Gallery. (Inv 1969.60.11). Gift of Mr. and Mrs. Walter Bareiss, B.S. 1940s.

**OPP.54:029**; B.I:761; M:255; MF.10\*:206p; SF.09\*:31

---

**Les deux modèles nus.** Vallauris. 18-March/1954. Lithograph on Arches, edition 50. [58 x 38] [58,4 x 36,5] 58,1 x 38,1 cm. Christie's. #106, 6683, 10/09/02. Also Yale University Art Gallery. (Inv 1969.60.13). Gift of Mr. and Mrs. Walter Bareiss, B.S. 1940s.

**OPP.54:060**; B.I:762; M:256; GP.96:319p; LO.07b\*:n/a; MF.10\*:206p; SF.09\*:32





**Les deux modèles.** Vallauris. 18-March/1954. Lithograph on Arches. 50,2 x 62,9 cm. Kunstmuseum Liechtenstein, Vaduz. Also Saarlandmuseum, Saarbrücken. Stiftung Saarländischer Kulturbesitz; Yale University Art Gallery. (Inv 1969.60.8). Gift of Mr. and Mrs. Walter Bareiss, B.S. 1940s.

**OPP.54:126;** B.I:757; M:253; MF.10\*:204p; RM.07\*:112p; RM.07\*:113p; SF.09\*:30; WC.62\*:64

---

**Nu à la chaise.** Vallauris. 18-March/1954. Lithograph on Arches, edition 50. 50,5 x 38 cm. Christie's. #252, 1322, 04/28/03.

**OPP.54:128;** B.I:763; M:261; JR.10\*:188p





**Nu accroupi.** Vallauris. 18-March/1954. Oil on canvas. 130 x 97 cm. Private collection. Formerly Siegfried and Angela Rosengart, Lucerne.

**OPP.54:380**; PP.54:160; Z.XVI:258; GR.71:11; RP.60\*:193; WS.93\*:112

**La pose habillée.** Vallauris. 19, 26-March/1954. Crayon on lithograph, edition 50 [Overlayer of *La pose habillée*]. 55 x 38 cm. Galerie Michael, Beverly Hills, CA. 2009.

**OPP.54:051**; B.I:764.II; M:257.02







**La pose habillée.** Vallauris. 19, 26-March/1954. Lithograph. 55,2 x 37,8 cm. The Museum of Modern Art, NYC. (Inv 782.1956). Gift of Mr. and Mrs. E. Powis Jones. Also Sprengel Museum, Hannover.

**OPP.54:337**; B.I:764; M:257; CC.01\*:67p; CN.56\*:22; MF.10\*:206p; PE.17:136p; RM.07\*:119p

---

**Pot-tête.** Vallauris. 20-March/1954. White earthenware pitcher, edition 50. [24] 23 x 16 x 18 cm. Musée National d'Art Moderne, Centre Georges Pompidou, Paris. (Inv AM11350A). Also Musée d'art et d'industrie de Roubaix (07/02/01). Sotheby's. #458, N07717, 11/02/01.

**OPP.54:046**; AR:236; CE.04\*:259; IG.89\*:n/a; JM.07\*:63; LR.07\*:50





**Femme couronnée de fleurs.** Vallauris. 20-March/1954. White earthenware pitcher, decoration in engobes under partial brushed glaze, grey patina, painted in yellow, green, black & white, edition 100. [24] 23 cm. Sotheby's. #459, N07717, 11/02/01.

**OPP.54:048**; AR:237; LE.21\*:330

**Tête de Jacqueline.** Vallauris. 20-March/1954. Incised & partially painted white terracotta vase. 23,5 x 20 cm. Sotheby's. #118, L19004, 02/27/19. Formerly Sotheby's. #42, PF1030, 12/08/10.

**OPP.54:326**; GR.74:580; PD.19\*:7





**Le peintre et son modèle.** Vallauris. 25-March/1954. Lithograph in greys, olive & black on Arches. 48,7 x 64,7 cm. Christie's. #254, 1322, 04/28/03.

**OPP.54:133**; M:262

**Deux clowns: trois dessins collés au dos d'une affiche.** Vallauris. 28-March/1954. Lithograph in colors, edition 50 [After *Deux clowns*]. 71 x 51 cm. Bonhams. #131, 26141, 08/18/20.

**OPP.54:056**; B.I:766; M:264; BS.55:508p; DO.07\*:215; WS.95a\*:155





**Homme: le pinceau entre les dents I.** Vallauris. 28-March/1954. India ink on sketchbook page. 32 x 24 cm. Private collection.

**OPP.54:260**; PP.54:162; Z.XVI:263; BA.03a\*:366



**Combat.** Vallauris. 28-March/1954. India ink on paper. 24 x 32 cm. Private collection.

**OPP.54:593**; PP.54:161; Z.XVI:261



**Peintre et amateur (d'après Daumier) IV.** Vallauris. 29-March/1954. India ink on sketchbook page. 32 x 24 cm. Fundación Almine & Bernard Ruiz-Picasso para el Arte.

**OPP.54:245**; PP.54:166; Z.XVI:260; BA.03a\*:371

**Homme: le pinceau entre les dents I.** Vallauris. 29-March/1954. Pen & India ink on paper. [32 x 24] 31,8 x 23,9 cm. Sotheby's. #525, L16005, 02/05/16. Formerly Marina Picasso Collection. (Inv 5583).

**OPP.54:261**; PP.54:163; Z.XVI:266; BA.03a\*:367; JR.93\*:87; TO.14\*:73





**Peintre et modèle II.** Vallauris. 29-March/1954. India ink on sketchbook page. 32 x 24 cm. Private collection.

**OPP.54:263**; PP.54:167; Z.XVI:267; BA.03a\*:369

**Peintre et personnage III.** Vallauris. 29-March/1954. India ink on sketchbook page. 32 x 24 cm. Private collection.

**OPP.54:264**; PP.54:168; Z.XVI:268; BA.03a\*:370





**Homme le pinceau entre les dents III.** Vallauris. 29-March/1954. India ink on paper. 32 x 24 cm. Private collection.

**OPP.54:594**; PP.54:165; Z.XVI:265

---

**Le peintre et son modèle.** Vallauris. 30-March/1954. Lithograph in colors on Arches. 50,2 x 64,5 cm. Christie's. #253, 1322, 04/28/03.

**OPP.54:130**; B.I:765; M:262.bis;  
MPA:1981.6.24; JR.12:188p; MF.10\*:207p;  
WC.62\*:61





**Claude dessinant et Paloma.** Vallauris. April/1954. Oil on canvas. 92 x 73 cm. Christie's. #8, 1994, 05/06/08. Formerly Private collection, Newark, NJ.

**OPP.54:221**; PP.54:173; Z.XVI:272; DF.10:91p; GP.96:321p; HD.01:58; JL.71:19p; NC.10:67; WS.95a\*:152; WW.91:517p

---

**Sylvette.** Vallauris. [April~May]/1954. Pencil on paper. 32 x 24 cm. Christie's. #506, 7245, 06/22/06. Formerly Sylvette David Collection.

**OPP.54:222**; FW.67\*:203; GB.14\*:25; JL.71:269p; PA.66a\*:82





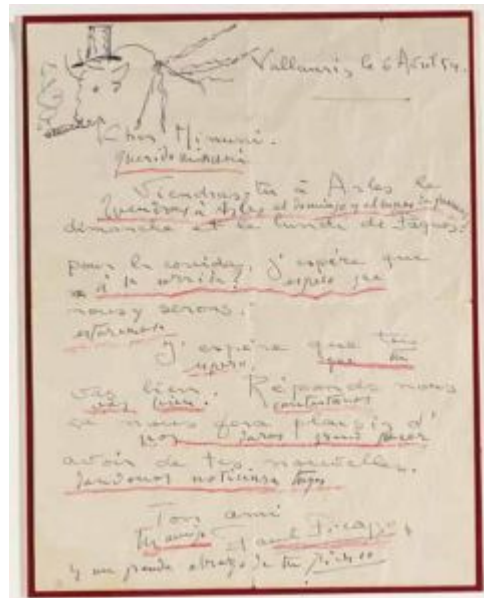


**Chouette.** Cannes. 3-April/1954. Brush & India ink on paper. 18 x 20 cm. Christie's. #197, 17155, 05/14/19.

**OPP.54:602**

**Lettre dédicacé.** [Vallauris]. 6-April/1954. Ink on paper. 27 x 21 cm. Sotheby's. #87, L03405, 12/09/03.

**OPP.54:145**





**Petite fille sautant à la corde.** Vallauris. 11-April/1954. Oil on panel. 162 x 129,8 cm. Private collection.

**OPP.54:426;** HP.65:99p



**Deux enfants dessinant.** Vallauris. 12-April/1954. Oil on canvas. 81 x 65 cm. Private collection.

**OPP.54:387;** GA.00\*:78; JR.12\*:157p;  
MG.04b\*:108



**Paloma.** Vallauris. 15-April/1954. Oil on canvas. 81,3 x 64,8 cm. Christie's. #22, 15469, 02/27/18. Formerly Sotheby's. #23, L09109, 12/07/99.

**OPP.54:548**

**Tête de faune.** Vallauris. 15-April/1954. Color pencil on orange paper [OïC]. 50 x 32,5 cm. Private collection.

**OPP.54:595**; PP.54:169; Z.XVI:269





**Portrait de Sylvette David.** Vallauris. [Late-] Spring/1954. Oil on canvas. 81 x 65 cm. Private collection. Formerly Sotheby's. #L34, 12/14/90.

**OPP.54:025**; PP.54:176; Z.XVI:276; GB.14\*:8; QP.64:54p

---

**Paloma debout.** Vallauris. 16-April/1954. Oil on canvas. 100 x 81 cm. Fundación Almine & Bernard Ruiz-Picasso para el Arte.

**OPP.54:230**; PP.54:171; Z.XVI:273; BS.86a\*:39; JR.10\*:181p; MG.03b\*:65





**Paloma (Manger).** Vallauris. 16-April/1954. Oil on canvas. 72,4 x 59,7 cm. Michelle Rosenfeld Gallery. 2011.

**OPP.54:354**

**Fillette au tricycle.** Vallauris. 17-April/1954. Oil on canvas. 73 x 60,3 cm. Helly Nahmad Collection, Monaco/London. Formerly Christie's. #51, 03/28/88.

**OPP.54:358**; PP.54:172; LO.98b\*:n/a; RT.99\*:56





**Portrait de Sylvette David.** Vallauris. 18-April/1954. Charcoal on canvas. [92,5 x 73] 91,7 x 73,4 cm. Sotheby's. #14, N09567, 11/14/16. Formerly Christie's. #81, 667, 02/03/03.

**OPP.54:026**; GB.14\*:4; HP.64:61p; MU.86\*:n/a

---

**Portrait de Sylvette David.** Vallauris. 18-April/1954. Oil on canvas. 92 x 73 cm. Helly Nahmad Collection, Monaco/London. Formerly Christie's. #216, 9772, 11/07/01.

**OPP.54:042**; PP.54:175; Z.XVI:275; GB.14\*:6





**Profil de jeune fille (Sylvette)**. Vallauris. 18-April/1954.  
Charcoal on canvas. 73 x 60 cm. Private collection.

**OPP.54:293**; EC.09\*:19; GB.14\*:5; LE.07\*:68

---

**Sylvette (Portrait de Mademoiselle D.)**. Vallauris.  
[May] 19-April/1954. Oil on canvas. 100 x 81 cm.  
Private collection.

**OPP.54:217**; PP.54:206; Z.XVI:307; GB.14\*:7





**Portrait de Sylvette David.** Vallauris. [19-April~] 22-May~4-October/1954. Oil on canvas [panel]. 130,7 x 97,2 cm. The Art Institute of Chicago. (Inv 1955.821). Gift of Mary L. and Leigh B. Block.

**OPP.54:007**; PP.54:211; Z.XVI:315; CH.68a\*:51; GB.14\*:49; HG.71:155p; KG.71:109; KG.85:109; MG.80:7; SD.13a\*:204; WW.91:518p

**Sylvette.** Vallauris. [19-April~22-May~4-October]/1954. Pencil on paper. 27 x 21 cm. Private collection, Barcelona. Courtesy Galería Senda Collection, Barcelona.

**OPP.54:210**; PP.54:216; Z.XVI:299; EC.09\*:20; FC.00\*:93; GB.14\*:48; PN.99b\*:57p







**Portrait de Sylvette David III.** Vallauris. 21-April/1954.  
Lead pencil on paper. 31 x 24 cm. Fundación Almine & Bernard  
Ruiz-Picasso para el Arte.

**OPP.54:015**; PP.54:179; Z.XVI:284; GB.14\*:11;  
JR.10\*:195p; WR.96:448p; WW.91:519p



**Portrait de Sylvette David II.** Vallauris. 21-  
April/1954. Lead pencil on paper. 31 x 24 cm. Musée  
Picasso, Paris. Dation 1979.

**OPP.54:024**; MPP:1429; PP.54:178; Z.XVI:277;  
GB.14\*:10; MD.02:313p; PD.06\*:n/a; TO.04:55p;  
WW.91:519p



**Portrait de Sylvette David I.** Vallauris. 21-April/1954. Pencil on paper. 31 x 24 cm. Musée Picasso, Paris. Dation 1979.

**OPP.54:028**; MPP:1428; PP.54:177; Z.XVI:278; EC.16\*:158; GB.14\*:9; MA.08a\*:n/a; MD.02:313p; MF.10:182p; PD.06\*:n/a; WW.91:519p

---

**Portrait de Sylvette David.** Vallauris. 27-April/1954. Oil on canvas laid down on wood panel. 99,1 x 81,3 cm. McNay Art Museum, San Antonio, TX. (Inv 1973.36). Gift of the Estate of Tom Slick, 1973.

**OPP.54:019**; PP.54:181; Z.XVI:287; GB.14\*:12; KG.71:98; KG.85:98; RM.07\*:83p





**Sylvette David.** Vallauris. 27-April/1954. Pencil on paper. 32 x 24 cm. Dolores Alvarez de Toledo Collection, Paris.

**OPP.54:144**; PP.54:180; Z.XVI:283; GB.14\*:13

---

**Portrait d'Angela Rosengart.** Vallauris. 28-April/1954. Crayons [Oic]. 32 x 24 cm. Private collection.

**OPP.54:151**; PP.54:182; Z.XVI:270; MD.02:298p





**Portrait de Sylvette David de profil.** Vallauris. 29-April/1954. Oil on canvas. [99 x 80,5] 100 x 81 cm. Collection Graindorge, Liège.

**OPP.54:018**; PP.54:186; Z.XVI:288; GB.14\*:14; KG.71:99; KG.85:99; KW.85:99; MD.02:314p; PD.69:23p; RP.81:22.9



**Portrait de Sylvette David II.** Vallauris. 29-April/1954. Pencil on paper. 32 x 24 cm. Private collection, Germany.

**OPP.54:030**; PP.54:183; Z.XVI:280; GB.14\*:16; MD.02\*:318p; RD.00\*:136; RD.11\*:39



**Sylvette III.** Vallauris. 29-April/1954. Pencil on paper. 32 x 24 cm. Private collection. Formerly Christie's. #130, 1148, 11/07/02.

**OPP.54:062**; PP.54:185; Z.XVI:282; GB.14\*:17; NY.21g\*:72; NY.83b\*:70



**Portrait de Sylvette.** Vallauris. 29-April/1954. Pencil on paper. 31,1 x 24,1 cm. Museum Ludwig, Köln. (Inv ML/Z 1994/048). Schenkung 1994. Formerly Pace Gallery, NY.

**OPP.54:152**; PP.54:184; Z.XVI:281; GB.14\*:15; WO.92\*:67



**Sabartés pissant.** Vallauris. 29-April/1954. Ink on paper. 27 x 21 cm. Sotheby's. #42, PF1913, 11/18/19. Formerly Hélène Bailly Gallery, Paris; Christie's. #3, 12610, 03/31/16; Jaume Sabartés Collection.

**OPP.54:511**; CR.74:1087

**Portrait de Sylvette David (III).** Vallauris. 30-April/1954. Oil on canvas. 81 x 65 cm. Sotheby's. #16, N08633, 05/05/10. Formerly #44, L00101, 06/27/00.

**OPP.54:017**; PP.54:187; Z.XVI:289; GB.14\*:20; KG.71:100; KG.85:100; PA.54b\*:n/a





**Portrait de Sylvette David (IV)**. Vallauris. [Late-Spring] 30-April/1954. Oil on canvas. [100 x 81] 99,9 x 80,9 cm. Pola Museum of Art, Hakone, Kanagawa, Japan. Formerly Galerie Beyeler, Basel; Maya Widmaier Picasso Collection.

**OPP.54:027**; PP.54:174; Z.XVI:274; GB.14\*:21; ME.82a\*:131; WW.91:518p

---

**Sylvette**. Vallauris. 30-April/1954. Oil on canvas. 81 x 65 cm. Private collection.

**OPP.54:177**; PP.54:188; Z.XVI:290; AS.60:61a; GB.14\*:19





**Sylvette (I)**. Vallauris. 30-April/1954. Oil on canvas. 130 x 97 cm. Rinel Fischer Foundation. Formerly Sotheby's. #43, L07007, 06/19/07.

**OPP.54:206**; PP.54:189; Z.XVI:291; GB.14\*:18; HU.68\*:82; II.80\*:n/a; LC.61\*:n/a



**Portrait de Sylvette David**. Vallauris. 1-May/1954. Oil on canvas. 81 x 65 cm. The Albertina, Vienna. (Inv GE102DL). Herbert Batliner Collection. (Inv G.9).

**OPP.54:200**; PP.54:192; Z.XVI:293; CG.12\*:96; GB.14\*:23; PF.10\*:133





**Buste de Sylvette.** Vallauris. 1-May/1954. Graphite on paper. 31 x 24 cm. Fundación Almine & Bernard Ruiz-Picasso para el Arte.

**OPP.54:207**; PP.54:190; Z.XVI:279; GB.14\*:24

**Sylvette.** Vallauris. 1-May/1954. Oil on canvas. 99,7 x 81,3 cm. The Detroit Institute of Arts. (Inv 62.141). Founders Society Purchase, Metropolitan Opera Benefit Fund.

**OPP.54:209**; PP.54:191; Z.XVI:285; GB.14\*:22; NY.59c\*:9





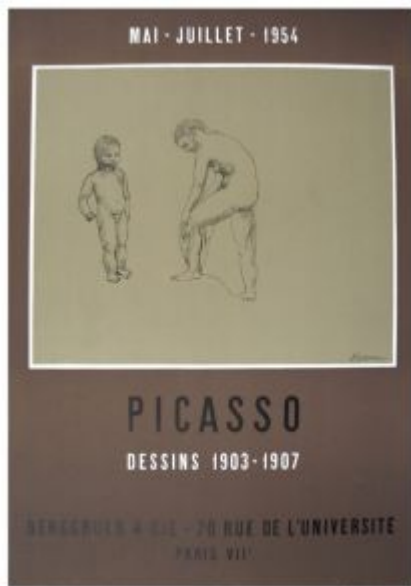
**Fille aux tétards (Paloma)**. Vallauris. [May]/1954. Oil on canvas. 81 x 65 cm. Catherine Hutin-Blay Collection, Paris. Formerly Jacqueline Roque Picasso Collection.

**OPP.54:180**; GC.07:143p; HN.00\*:13; WS.95a\*:150

**Ethel et Julius Rosenberg**. Vallauris. May/1954. Ink on paper. S/U. Musée d'Art et d'Histoire Paul Éluard, Saint-Denis.

**OPP.54:395**; GU.00:154





**Pablo Picasso Dessins 1903-1907.** Paris. May~July/1954. Lithograph [After *Femme et enfant*]. 60,9 x 43,1 cm. Private collection.

**OPP.54:502**

**Portrait de Sylvette David.** Vallauris. 2-May/1954. Oil on canvas. [100 x 81] 99,8 x 81 cm. Christie's. #82, 20661, 03/02/22.

**OPP.54:010**; PP.54:194; Z.XVI:292; GB.14\*:27; MJ.55\*:125





**Sylvette.** Vallauris. [Late-Spring] 2-May/1954. Oil on canvas. 81,3 x 64,8 cm. Private collection. Formerly Louis Reijtenbagh Collection.

---

**OPP.54:357**; AS.60:61c; GB.14\*:26; JC.56:565p;  
MR.59\*:52; PA.54b\*:44



**Sylvette (Portrait de Mademoiselle D.)**. Vallauris. [April~] 3-May/1954. Oil on canvas. 81 x 65 cm. Kawamura Memorial Museum of Art, Sakura.

---

**OPP.54:011**; GB.14\*:28; LB.58:104p; LB.59:104;  
UP.00:988



**Sylvette (Portrait de Mademoiselle D.)**. Vallauris. 3-May/1954. Oil on canvas. [81 x 64,5 cm. Kunsthalle Bremen. Der Kunstverein in Bremen.

**OPP.54:013**; BG.87:155; DT.78:85; DT.81:103; GB.14\*:29; GB.87:283; KG.71:110; KG.85:110; MD.02:314p; MF.10\*:183p; TI.71:61

**Portrait de Sylvette David dans un fauteuil d'osier.**  
Vallauris. 4-May/1954. Oil on canvas. 116 x 89,5 cm.  
Bergen Kunstmuseum, Norway. Stenersen Collection.

**OPP.54:012**; PP.54:195; Z.XVI:294; GB.14\*:30;  
KG.71:101; KG.85:101; LB.58:104p; MD.02:314p;  
RM.07\*:81p





**Portrait de Sylvette David (Pour Silvette)**. Vallauris. 5-May/1954. Oil on canvas. 81 x 65 cm. Dr. Herschel Carey Walker Collection, NY.

**OPP.54:009**; PP.54:196; Z.XVI:306; CN.56\*:7; EG.66\*:20p; GB.14\*:31; JC.69:26; JR.62\*:7.3; MD.02:315p; NY.71b\*:66; PD.09:387p; RS.88:151p; WC.62\*:66

**Études pour La femme à la clé**. Vallauris. 8-May/1954. India ink on paper. 32 x 24 cm. Private collection.

**OPP.54:211**; PP.54:197; Z.XVI:296; GB.14\*:32; TG.94:237p



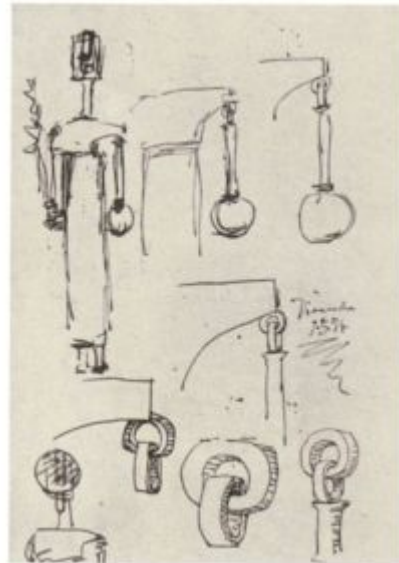


**Études de femmes pour La femme à la clé.** Vallauris. 8-May/1954. Pen & ink on paper. [32 x 24] 31,5 x 23,5 cm. Sotheby's. #11, L22009, 10/13/22. Formerly Marina Picasso Collection.

**OPP.54:212**; PP.54:198; Z.XVI:298; GB.14\*:33

**Études pour La femme à la clé.** Vallauris. 9-May/1954. India ink. 32 x 24 cm. Private collection.

**OPP.54:213**; PP.54:199; Z.XVI:295; GB.14\*:34





**Sylvette.** Vallauris. 9-May/1954. India ink. 32 x 24 cm. Private collection.

**OPP.54:214**; PP.54:200; Z.XVI:300; GB.14\*:35

**Études pour La femme à la clé.** Vallauris. 10~11-May/1954. India ink. 32 x 24 cm. Private collection.

**OPP.54:215**; PP.54:201; Z.XVI:297; GB.14\*:36; TG.94:237p







**Enfants dessinant.** Vallauris. 12-May/1954. Oil on canvas. 91,8 x 73 cm. Helly Nahmad Collection, Monaco/London. Formerly Sotheby's. #48, N08195, 05/03/06; Catherine Hutin-Blay Collection.

**OPP.54:225**; CB.11\*:162p; HN.13\*:199p; JL.71:19p

**Claude et Paloma.** Vallauris. 14-May/1954. Oil on canvas [OIC]. 116 x 89 cm. Private collection.

**OPP.54:598**; PP.54:203; Z.XVI:322





**Femme et enfants: le dessin.** Vallauris. 15-May/1954. Oil on canvas. 130 x 97 cm. The Picasso Estate.

**OPP.54:321**; CG.04\*:26; GA.00\*:79; JR.10\*:177p;  
MG.04b\*:109; MI.01\*:155

**La femme à la clé (La Taulière).** Vallauris~Cannes.  
[October/1953~] Mid-May~Late-June/1954 [~1958].  
Bronze with stone base added 09/58 [Cast 1954 after *La  
femme à la clé (La Taulière)*]. 172 x 43 x 30 cm. Private  
collection.

**OPP.54:390**; WS:237.II; EC.09:37; GB.14\*:67;  
MM.02:54p; TG.94\*:109; TU.15\*:126; WS.93\*:101





**Claude dessinant, Françoise et Paloma.** Vallauris. 17-May/1954. Oil on canvas. 116 x 89 cm. Musée Picasso, Paris. Dation 1979.

**OPP.54:184**; MPP:209; PP.54:204; Z.XVI:323; BM.05:225p; BP.21:83p; DD.61:246p; EC.16\*:156; GA.14:33p; GB.87:282; GC.07:150p; GP.96:322p; HN.00\*:12; MA.08a\*:n/a; ME.82a\*:132; MF.01:51p; MF.10:72p; MM.02\*:239p; MP.85:183; OW.13:95p; PA.79a\*:342; PD.09:381p; PD.65:222p; RB.99:18p; SG.96:4.28; TG.88:16; TO.04:54p; UP.00:990; WS.95a\*:151; WW.91:516p; YB.99\*:222

**Portrait de Sylvette David au fauteuil vert (II).** Vallauris. 18-May/1954. Oil on canvas. [81 x 65] 121 x 99 cm. Private collection, New York.

**OPP.54:006**; PP.54:208; Z.XVI:308; AS.60:61c; BS.55:333p; GB.14\*:38; GD.77:71p; JC.69:25; KG.71:103; KG.85:103; MD.02:315p; PD.65:212p; TI.71:113p; UP.00:987; WW.91:519p





**Sylvette sur fond rouge (I)**. Vallauris. 18-May/1954. Oil on canvas. [80,5 x 64,5] 81 x 65 cm. Private collection.

**OPP.54:008**; PP.54:207; Z.XVI:309; BS.55:229; EG.66\*:21p; GB.14\*:37; KG.71:102; KG.85:102

---

**Le petit dessinateur**. Vallauris. 18-May/1954. Lithograph on wove paper, edition 50. [64,8 x 50,2] 65,5 x 50,5 cm. Kunsthalle Bremen. Der Kunstverein in Bremen. Kupferstichkabinett. Also Musées royaux des Beaux-Arts de Belgique, Bruxelles. (Inv 11209).

**OPP.54:231**; B.I:768; M:263.01; GB.14\*:144; HK.65:162p; VO.16:114p; WC.62\*:63





**Portrait de Sylvette David.** Vallauris. 19-May/1954. Oil on canvas. [91 x 72,5] 92 x 73 cm. Sotheby's. #42, N08195, 05/03/06.

**OPP.54:014**; PP.54:209; Z.XVI:310; GB.14\*:40; KG.71:104; KG.85:104; LP.99:208p



**Portrait de Sylvette David.** Vallauris. 19-May/1954. Oil on canvas. 100 x 87,6 cm. The Israel Museum, Jerusalem. (Inv B99.1433). The Arthur and Madeleine Chalette Lejwa Collection. Bequeathed by Madeleine Chalette Lejwa, New York, to American Friends of the Israel Museum.

**OPP.54:218**; PP.54:210; Z.XVI:311; BD.16\*:81; GB.14\*:39



**Portrait de Sylvette David.** Vallauris. 20-May/1954. Oil on wood panel. 100 x 81 cm. Private collection.

**OPP.54:023**; PP.54:212; Z.XVI:313; GB.14\*:41;  
KG.71:105; KG.85:105; MD.02:315p



**Portrait de Sylvette David.** Vallauris. 23-May/1954. Oil on canvas. [72,5 x 59,5] 73 x 60 cm. Private collection, Switzerland.

**OPP.54:020**; PP.54:213; Z.XVI:314; GB.14\*:42;  
HS.69:5.13; KG.71:106; KG.85:106



**Portrait de Sylvette David.** Vallauris. 24-May/1954. Oil on canvas. [72,5 x 59,5] 73 x 60 cm. Dimitri Mavromatis Collection, Geneva. Formerly Loudmer. #58, 04/01/90.

**OPP.54:021**; PP.54:214; Z.XVI:312; GB.14\*:43; KG.71:107; KG.85:107

---

**Sylvette de Sylvette.** Vallauris. 25-May/1954. Charcoal on cut-out cardboard. 19 x 14,4 cm. The Picasso Estate.

**OPP.54:446**; WS:658; GB.14\*:62





**Sylvette.** Vallauris. [End-May]/1954. Painted metal. 63,5 cm. Private collection. Courtesy of Guggenheim, Asher Associates, New York. Also Sotheby's. #32, N08314, 05/08/07.

**OPP.54:235**; PP.54:321b; WS:490; GB.14\*:54; HP.64:89p; JL.66\*:n/a; RP.67b\*:n/a; RP.67c\*:151p

---

**Buste de Sylvette.** Vallauris. [End-May]/1954. Metal cut-out, bent and painted on both sides. 67 x 50 x 11 cm. Private collection.

**OPP.54:324**; PP.54:321c; WS:491.I; CG.12\*:99; GB.14\*:64; HP.64:88p; JR.10\*:199p; TU.15\*:139







**Sylvette.** Vallauris. [End-May]/1954. Sheet metal, cut & painted [Cast after *Sylvette*]. 69,9 x 47 x 7,6 cm. Fondation Hubert Looser, Zürich.

**OPP.54:356**; WS:488.II; CG.12\*:98; EC.09\*:21;  
EC.16\*:159; GB.14\*:57; HP.64:89p; MI.01\*:156

---

**Sylvette.** Cannes. [End-May]/1954. Painted metal. 70 cm. Sotheby's. #31, N08987, 05/07/13.

**OPP.54:406**; PP.54:321a; WS:489; GB.14\*:58;  
JL.66\*:317; RP.67b\*:126; RP.67c\*:124; SF.95a\*:n/a;  
SF.95b\*:n/a





**Sylvette.** Vallauris. [End-May]/1954. Metal cut-out, bent and painted on both sides. S/U. Private collection.

**OPP.54:425**; WS:661.I; HP.64:88p

---

**Sylvette.** Vallauris. [End-May]/1954. Charlk on cut-out cardboard. S/U. Private collection.

**OPP.54:447**; GB.14\*:55





**Portrait de Sylvette.** Vallauris. [End-May]/1954. Chalk on cut-out cardboard. 67,3 x 54,5 cm. Private collection.

**OPP.54:450**; WS:657; GB.14\*:63

---

**Sylvette.** Vallauris. [End-May]/1954. Black chalk on cardboard. 14 cm. Private collection.

**OPP.54:451**; GB.14\*:65





**Figures.** Vallauris. 27-May/1954. Pencil. 27 x 19; 18 x 12; 12 x 8. Private collection.

**OPP.54:219**; PP.54:215; Z.XVI:302.I; GB.14\*:59; GB.14\*:60; GB.14\*:61

---

**Sylvette (Étude).** Vallauris. 27-May/1954. Pencil on cut-out paper. 27 x 19 cm. The Picasso Estate.

**OPP.54:448**; Z.XVI:302.II; GB.14\*:60





**Sylvette (Étude)**. Vallauris. 27-May/1954. Pencil on paper & cardboard. 12,2 x 8 cm. Private collection.

**OPP.54:449**; Z.XVI:302.III; GB.14\*:61

**Potrait de Sylvette la blouse rayée**. Vallauris. 30-May/1954. Oil on canvas. [72,5 x 59,5] [73 x 60] 73,3 x 60,6 cm. Mildred Lane Kemper Art Museum (Washington University, St. Louis). (Inv WU 3880). Gift of Mr. and Mrs. Richard K. Weil, 1959.

**OPP.54:022**; PP.54:193; Z.XVI:286; GB.14\*:44; KG.71:108; KG.85:108





**Jacqueline.** Vallauris. 2-June/1954. Lead pencil on paper. 25,5 x 19,3 cm. Catherine Hutin-Blay Collection, Paris. Formerly Jacqueline Roque Picasso Collection.

**OPP.54:482**; EC.16\*:160; PD.19\*:3; PJ.14\*:37p

---

**Jacqueline aux mains croisées.** Vallauris. 3-June/1954. Oil on canvas. 116 x 88,5 cm. Musée Picasso, Paris. Jacqueline Roque Picasso Collection. Dation 1990.

**OPP.54:005**; MPP:1990.26; PP.54:218; Z.XVI:324; AB.12\*:247p; BD.16\*:82; BP.21:85p; CE.04\*:14; DD.61:246p; EM.55:246p; GA.14:97p; GB.14:263p; GB.87:275; GC.07:155p; GR.90\*:23; HD.01:59; JL.71:171p; JS.94:62p; KG.71:112; KG.85:112; KH.03\*:n/a; MA.08a\*:n/a; MA.86\*:31; MD.02\*:327p; MM.00:81p; OW.02:35; OW.03:35; OW.04:35; OW.13:103p; PC.77:456p; PD.69:24p; PD.95:7p; PE.17\*:143p; PF.10:25p; RB.99:34p; SD.05\*:140; SP.04\*:n/a; SY.11\*:n/a; TO.04:55p; UP.00:993; WW.91:514p





**Portrait de Jacqueline aux fleurs.** Vallauris. [2] 3-June/1954. Oil on canvas. 100 x 81 cm. Catherine Hutin-Blay Collection, Paris. Formerly Jacqueline Roque Picasso Collection.

**OPP.54:181**; PP.54:217; Z.XVI:325; AB.57\*:n/a; AP.11:139p; BA.23\*:247p; BA.90a\*:1; DB.89:125p; GB.14:173p; GD.77:69p; GR.90:66p; HJ.83:117p; HJ.96:147p; IW.93:82p; JC.59:75p; JW.01:51p; LM.17\*:n/a; MA.55:126; MA.91a\*:1; MJ.55\*:126; MM.06\*:32; MR.03\*:89p; NM.95:354p; PA.54b\*:n/a; PD.09:448p; PD.19\*:4; PD.65:217p; PJ.14\*:35p; RK.86\*:n/a; RP.60\*:194; RP.81:25.3; SG.06:141p; TG.88:17; UP.00:994; WR.80\*:414p; WR.96:449p; WS.11:265p; WS.93\*:113; WW.73:145p; WW.91:515p

**Lettre manuscrite à Max Pellequer.** [Vallauris]. 5-June/1954. Ink on paper. S/U. Piasa. #44, 2142, 02/15/24. Formerly Max Pellequer Collection.

**OPP.54:658**





**Colombe.** Vallauris. 7-June/1954. Painted & glazed ceramic dish. 17,5 x 22 cm. Christie's. #66, 9135, 06/22/01. Formerly Sotheby's. #116, 10/25/00.

**OPP.54:033**

**Colombe.** Vallauris. 7-June/1954. Painted & glazed ceramic dish. 21,9 cm. Private collection. Formerly Sotheby's. #274, N07721, 11/08/01.

**OPP.54:053**







**Colombe.** Vallauris. 7-June/1954. Painted & glazed ceramic dish. 17,5 x 22 cm. Leslie Sacks Fine Art. 2005. Formerly Sotheby's. #106, W04704, 03/24/04.

---

**OPP.54:150**

---

**Colombe de la Paix.** Vallauris. 7-June/1954. Painted & glazed ceramic dish. 21,9 x 17,8 cm. Christie's. #143, 1413, 09/29/04.

---

**OPP.54:156**





**Colombe de la Paix.** Vallauris. 7-June/1954.  
Painted & glazed ceramic dish. 17,8 x 22,2 cm.  
Christie's. #85, 5981, 10/29/09.

**OPP.54:296**

---

**Colombe de la paix.** Vallauris. 7-  
June/1954. Painted & glazed ceramic dish.  
21,6 cm. Christie's. #211, 5063, 02/11/11.

**OPP.54:335**





**Colombe de la paix.** Vallauris. 7-June/1954. Painted & glazed ceramic dish. 21,8 cm. Christie's. #6, 3692, 12/01/11.

**OPP.54:355**

**La colombe de la paix.** Vallauris. 7-June/1954. Painted & glazed ceramic dish. 22 cm. Christie's. #63, 3505, 05/23/12.

**OPP.54:364**





**Colombe de la paix.** Vallauris. 7-June/1954.  
White earthenware platter, glazed & painted. 22,2  
cm. Sotheby's. #18, L15162, 03/18/15.

**OPP.54:490**

**Colombe.** Vallauris. 7-June/1954. Unique  
ceramic plate painted in colors. 17,8 x 22,2  
cm. Phillips. #11, NY030013, 04/29/13.

**OPP.54:503**





**La colombe de la paix.** Vallauris. 7-June/1954.  
Painted glazed ceramic. 17,4 x 21,6 cm. Christie's.  
#294, 15722, 03/23/18.

**OPP.54:549**

**Portrait d'Aniouta Pitoëff.** Vallauris. 15-June/1954.  
Pencil on paper. 39,1 x 23,6 cm. E. W. K. Collection, Bern.  
Formerly Georges Bloch Collection.

**OPP.54:386;** KB.01\*:147





**Julius et Ethel Rosenberg.** Paris. 20-June/1954. Print (Published in L'Humanité Dimanche, 06/20/54) [After *Julius et Ethel Rosenberg*]. 60 x 42,7 cm. Musée Picasso, Paris. 1992. (Inv 515 AP/H/45/122).

**OPP.54:603**; PA.19d\*:233

**Portrait de Paule de Lazermé.** Perpignan. [Summer]/1954. Pencil with white gouache highlights on lined paper. 15 x 8 cm. Private collection.

**OPP.54:606**; JP.75:273; PE.17\*:23p





**La patorra.** Perpignan. [Summer]/1954. Blue pencil on cut-out white paper. 12 x 7 cm. Private collection.

**OPP.54:607**

---

**Visage.** Perpignan. [Summer]/1954. Cut-out drawing paper. 2 x 2 cm. Private collection.

**OPP.54:608**; PE.17\*:30p





**Deyx figures les bras levés.** Perpignan.  
[Summer]/1954. Cut-out drawing paper. 9 x 6 cm.  
Private collection.

**OPP.54:609**; PE.17\*:30p

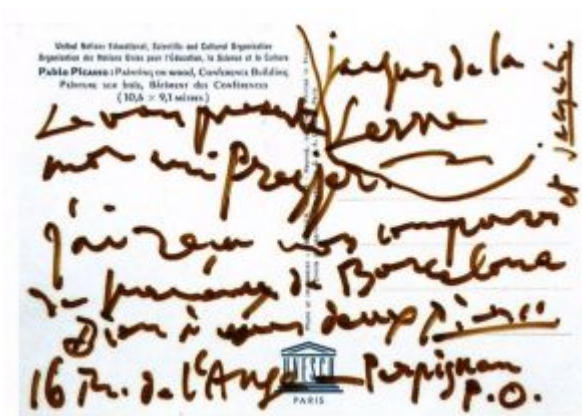
---

**Totote et Picasso dansant.** Perpignan.  
[Summer]/1954. Crayon on press cutting. S/U.  
Musée Hyacinthe-Rigaud, Ville de Perpignan.

**OPP.54:612**; PE.17:26p







**Carte postale adressée à Jacques et Paule de Lezarme.** Perpignan. [Summer/1954]. Brown ink on postcard. S/U. Private collection.

**OPP.54:615**; PE.17\*:78p

**Carte postale adressée à Jacques et Paule de Lezarme.** Perpignan. [Summer/1954]. Blue ink on postcard. S/U. Private collection.

**OPP.54:616**; PE.17\*:78p





**Jeune homme au barretina.** Perpignan. [Summer]/1954.  
Portcard reproduction. S/U. Musée Picasso, Paris. (Inv 515AP).

**OPP.54:622**; PE.17:157p

**Jacques.** Perpignan. [Summer]/1954. Pink  
linen-finish paper with a scalloped border  
sewn on both sides. 21 x 27 cm. Private  
collection.

**OPP.54:624**; PE.17\*:24p





**Jacques.** Perpignan. [Summer]/1954. Pink linen-finish paper with a scalloped border sewn on both sides. 21 x 27 cm. Private collection.

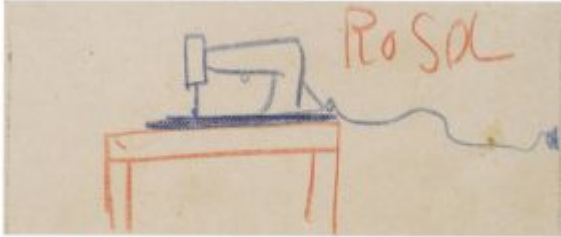
**OPP.54:625**; PE.17\*:24p

---

**Paule.** Perpignan. [Summer]/1954. Pink linen-finish paper with a scalloped border sewn on both sides. 21 x 27 cm. Private collection.

**OPP.54:626**; PE.17\*:24p





**Rosa.** Perpignan. [Summer]/1954. Pink linen-finish paper with a scalloped border sewn on both sides. 21 x 27 cm. Private collection.

**OPP.54:627**; PE.17\*:24p

---

**Totote.** Perpignan. [Summer]/1954. Pink linen-finish paper with a scalloped border sewn on both sides. 21 x 27 cm. Private collection.

**OPP.54:628**; PE.17\*:26p





**Sylvette I.** Vallauris. 25-June/1954. Pencil on paper. 27 x 21 cm. Private collection.

**OPP.54:442**; PP.54:219; Z.XVI:303; GB.14\*:45



**Sylvette II.** Vallauris. 25-June/1954. Pencil on paper. 27 x 21 cm. Private collection.

**OPP.54:443**; PP.54:220; Z.XVI:304; GB.14\*:46



**Sylvette III.** Vallauris. 25-June/1954. Pencil on paper. 27 x 21 cm. Private collection.

**OPP.54:444**; PP.54:221; Z.XVI:305; GB.14\*:47

**Le déjeuner sur l'herbe I (d'après Manet) (Étude).** Vallauris. 26-June/1954. [Conté crayon] pencil on paper. 21 x 27 cm. Musée Picasso, Paris. Dation 1979. Carnet:1058.

**OPP.54:313**; MPP:1882.02r; PP.54:222; Z.XVI:316; BA.18:286p; BL.96:50.2r; GB.87:252; GC.96:272p; LE.21:425p; PE.01a:68p; TG.88:53





**Le déjeuner sur l'herbe II (d'après Manet) (Étude).** Vallauris. 26-June/1954. [Conté crayon] pencil on paper. 21 x 27 cm. Musée Picasso, Paris. Dation 1979. Carnet:1058.

**OPP.54:314**; MPP:1882.03r; PP.54:223; Z.XVI:317; BA.18:286p; BL.96:50.3r; GC.96:272p; JB.08:100p; PE.01a:68p; TG.88:54

---

**Le déjeuner sur l'herbe III (d'après Manet) (Étude).** Vallauris. 26-June/1954. Conté crayon [pencil] on paper. 21 x 27 cm. Musée Picasso, Paris. Dation 1979. Carnet:1058.

**OPP.54:315**; MPP:1882.04r; PP.54:224; Z.XVI:318; BA.18:286p; BL.96:50.4r; PE.01a:68p; PP.20\*:264



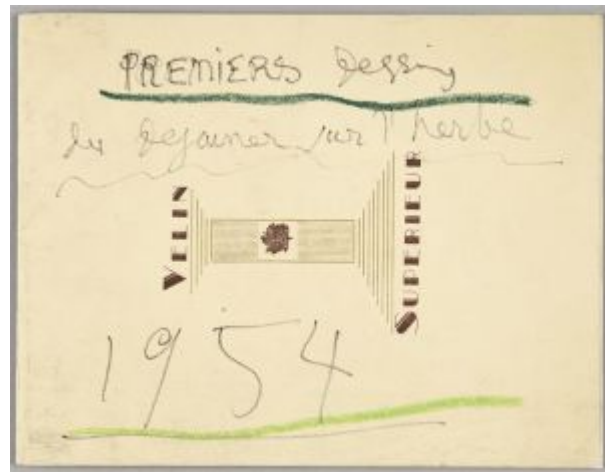


**Esquisse pour une assiette.** Vallauris.  
06/26/1954. Black ink & colored crayons on paper.  
11,5 x 27,7 cm. Bonhams. #17, 23394,  
05/11/2016.

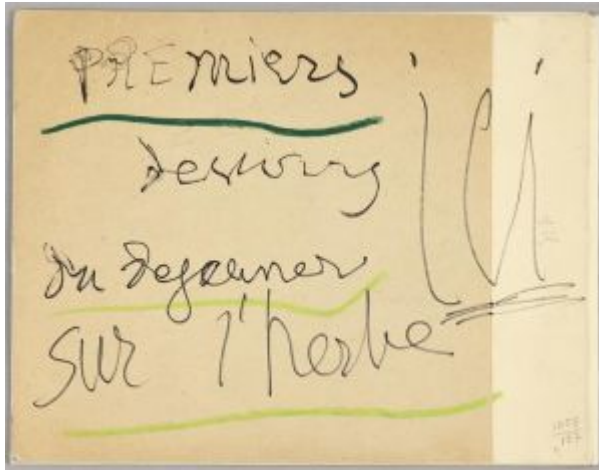
**OPP.54:512**

**Première de couverture.** Vallauris.  
26~29 June/1954. Felt-tip pen & crayon on  
sketchbook cover. 21 x 27 cm. Musée  
Picasso, Paris. Dation 1979. Carnet:1058.

**OPP.54:317**; MPP:1882.c1; BL.96:50.c1







**Quatrième de couverture.** Vallauris. 26~29-June/1954. Felt-tip pen & crayon in sketchbook. 21 x 27 cm. Musée Picasso, Paris. Dation 1979. Carnet:1058.

**OPP.54:318**; MPP:1882.c4; BL.96:50.c4

**Bustes des quatre personnages pour Le déjeuner sur l'herbe (d'après Manet) (Étude).** Vallauris. 29-June/1954. [Conté crayon] pencil on paper. 21 x 27 cm. Musée Picasso, Paris. Dation 1979. Carnet:1058.

**OPP.54:016**; MPP:1882.05r; PP.54:225; Z.XVI:319; BA.18:286p; BL.96:50.5r; GB.87:253; JB.08:99p; PE.01a:68p; PP.20\*:265; TG.88:55; WW.91:559p





**Étude d'après le Portrait de Delacroix par lui-même.**

Vallauris. 29-June/1954. Conté crayon on paper. 27 x 21 cm.  
Musée Picasso, Paris. Dation 1979. Carnet:1058.

**OPP.54:316**; MPP:1882.06r; PP.54:226; Z.XVI:320;  
BL.96:50.6r; GB.87:221; LE.21\*:383; PE.01a:42p; SG.96:5.5

---

**Jacqueline.** Vallauris. 29-June/1954. Charcoal on paper. 28,5 x 22,7 cm. Private collection.

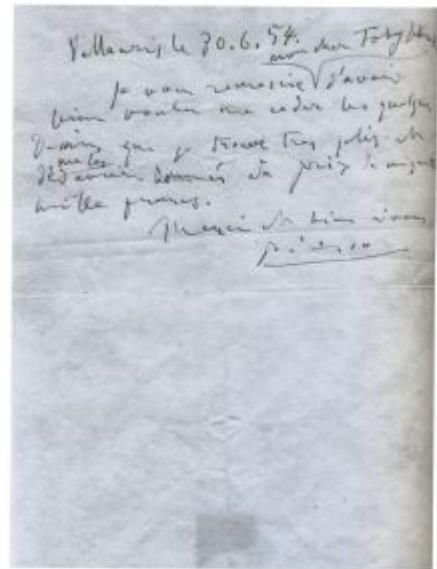
**OPP.54:483**; PJ.14\*:38p





**Jacqueline II.** Vallauris. 29-June/1954. Charcoal on paper. [29,5 x 23,2] 31 x 24 cm. Catherine Hutin-Blay Collection, Paris. Formerly Jacqueline Roque Picasso Collection.

**OPP.54:484**; LM.17\*:n/a; PD.19\*:10; PJ.14\*:38p



**Letter à Tobias Jellinek.** Vallauris. 30-June/1954. Ink on paper. S/U. Tobias Jellinek Archive.

**OPP.54:445**; GB.14:165p

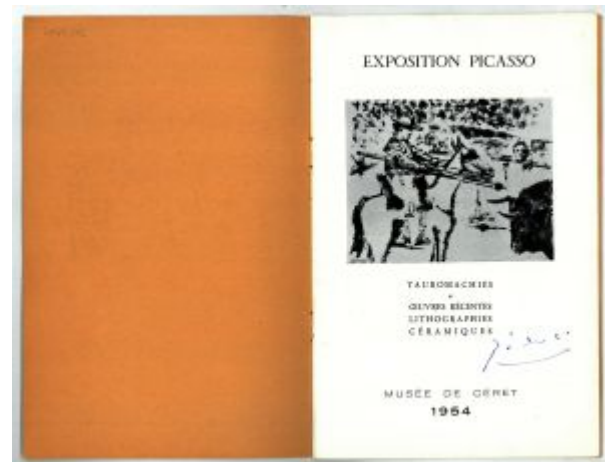


**La ronde de la paix.** Vallauris. July/1954. Lithograph on paper. 64 x 49,7 cm. Musée d'Art et d'Histoire Paul Éluard, Saint-Denis. (Inv NA 3906). Also Bonhams. #232AR, 20739, 09/18/13.

**OPP.54:372**; LU.93:399; PA.19d\*:278; PE.17\*:38p;  
PF.10\*:78; TO.04\*:282

**Signature.** Céret. [July]/1954. Blue ink on an exhibition booklet. 15,2 x 22,9 cm. KOTTE Autographs GmbH, Rosshaupten.

**OPP.54:660**



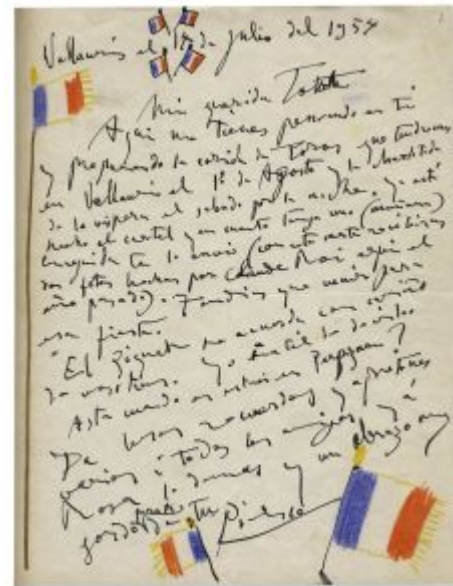


**Tête de faune heureux (Pour Pierre et Miette Brune).**  
Perpignan. 14-July/1954. Ink on paper. 25,5 x 19 cm. Robin Rile  
Fine Art, Miami. 2023. Formerly Gilden's Arts. 2014.

**OPP.54:434**

**Lettre de Picasso à Totote.** Vallauris. 14-July/1954.  
Ink & color crayons on paper. S/U. Biblioteca de  
Catalunya, Barcelona.

**OPP.54:619**; PE.17:109p





**Bouquet de fleurs (Pour Jean Yves)**. Vallauris. 22-July/1954. Color crayon on paper. 26,5 x 20,5 cm. Sotheby's. #203, L11005, 02/09/11.

**OPP.54:334**

**Inès Sassier assise (Pour Inès)**. Vallauris. 23-July/1954. Pencil on paper. [32 x 23,9] 31,8 x 23,7 cm. Christie's. #68, 20661, 03/01/22. Formerly Heinz Berggruen Collection; Christie's. #392, 6593, 06/27/02.

**OPP.54:054**; BL.06\*:182p; RB.04\*:57p





**Vive la paix.** Paris. 25-July/1954. Print on paper (Printed in L'Humanité Dimanche, 07/25/54) [After *La ronde de la paix*]. 65,5 x 55,5 cm. Musée Picasso, Paris. (Inv 515 AP/H/45/140).

**OPP.54:604**; PA.19d\*:279

---

**Dora.** Perpignan. August/1954. Pencil on a folded paper tablecloth. 12 x 18 cm. Artcurial. #453, 4140, 12/08/21.

**OPP.54:638**





**Carte postale de Javier Vilató Ruiz, Paule et Jacques de Lazerme, Picasso, Totote, Rosita et Michael Leiris adressée à oncle Jacques.**

Perpignan. 3-August/1954. Ink on postcard. S/U. Private collection.

**OPP.54:629**; PE.17:166p

**Corrida (Mon cher ami).** Vallauris. 5-August/1954. Black ink. 27 x 21 cm. Piasa. #16, 2142, 02/15/24. Formerly Max Pellequer Collection.

**OPP.54:657**







**que culito tan bonito ....** Perpignan. 7-August/1954. Pencil on white watermarked paper. 20 x 23 cm. Private collection.

**OPP.54:613**; PE.17\*:41p

**Personnages drapeaux et colombe au rameau.** Vallauris. 12-August/1954. India ink on paper. 65 x 50 cm. Private collection.

**OPP.54:597**; PP.54:227; Z.XVI:321





**Le Temple de la Paix à Fontfroide.** Vallauris. 12-August/1954. Pastel on paper. 49 x 64,5 cm. Sotheby's. #33, L20010, 06/18/20. Formerly Marina Picasso Collection.

**OPP.54:632**

---

**Paule catalana.** [Perpignan]. 14-August/1954. Red chalk on paper. [64 x 49] 64 x 48 cm. Musée Hyacinthe-Rigaud, Ville de Perpignan. Inv 84.2.3). Gift of Paule de Lazerme, 1984.

**OPP.54:618**; PE.17\*:89p





**Course de taureaux.** Perpignan. 16-August/1954. Color crayon. 23,3 x 31,3 cm. Bonhams. #1040, 11/19/07.

**OPP.54:269**

---

**Portrait de Paule de Lazerme.** Perpignan. 18-August/1954. Pencil on paper. S/U. Private collection.

**OPP.54:617**; PE.17:88p





**Portrait de Mme Lazerme en Catalane.** Perpignan. 19-August/1954. Gouache & pastel on paper. 60 x 50 cm. Musée Hyacinthe-Rigaud, Ville de Perpignan. (Inv 84.2.1). Don de Paule de Lazerme au musée de Perpignan.

**OPP.54:350**; CE.04\*:63; JR.10:20p; MR.16\*:n/a; PE.17\*:85p; YC.05:85p

**Signature dans un menu.** Font-Romeu. 19-August/1954. Ink on menu of restaurant from Le Grand Hôtel de Font Romeu. S/U. Fundación Pablo Ruiz Picasso, Museo Casa Natal.

**OPP.54:407**; RI.13\*:20p





**Portrait de Mme Lazerme en Catalane.** Perpignan. 19-August/1954. Crayon on paper. 64 x 46 cm. Musée Hyacinthe-Rigaud, Ville de Perpignan. (Inv 84.2.2). Don de Paule de Lazerme au musée de Perpignan.

**OPP.54:519**; CE.04\*:61; PE.17\*:87p

---

**Composition avec bateau et viel femme.** Perpignan. Late-August/1954. Photograph assembled in Raymond Fabre's studio. S/U. Private collection.

**OPP.54:611**; PE.17\*:37p





**Portrait de Marc Sabathier-Lévêque.** Perpignan. 26-August/1954. Ink on paper (Reproduced in the book by Marc Sabathier-Lévêque, Oratorio pour la nuit de Noël). S/U. Private collection.

**OPP.54:614**; PE.17\*:43p

**Paysage maritime.** Perpignan. 30-August/1954. Color pencil on paper dolly. 14 x 14 cm. Museu Termàlia, Caldes de Montbui.

**OPP.54:610**; PE.17\*:33p





**Portrait de Rosa Hugué (Para mi querida Rosita).**  
[Perpignan]. 1-September/1954. Conté crayon & charcoal on paper. 65 x 50 cm. Museu Termàlia, Caldes de Montbui.

**OPP.54:385**; PP.54:227b; BA.55\*:26; BA.71a\*:3;  
BA.81b\*:3; BA.82d\*:3; FC.00\*:92; JP.75:271; LL.60\*:54;  
MD.02:31p; PE.17\*:107p

**Sylvette: Couverture (pour Verve: Revue artistique et littéraire).** Vallauris. [September].  
Lithograph, edition 75. 44,2 x 62,8 cm. Christie's.  
#0265, 1965, 02/07/08.

**OPP.54:194**; PE.17\*:137p





**Vive le Xe Anniversaire de la Libération de la Provence.** Vallauris. September/1954. Ink on paper [Reproduced in Le Patriote de Nice et du Sud-Est & Les Lettres françaises, 09/02/54]. S/U. Private collection.

**OPP.54:397**; GU.00:100; LU.93:400

**Sylvette (Pour mon ami Quinn).** Vallauris. September/1954. Ink (Published in Verve, vol. 8, No. 29/30, 09/54). 36,3 x 27 cm. Edward Quinn Archive, Hombrechtikon.

**OPP.54:440**; GB.14\*:3







**Barriando higos.** Perpignan. September/1954.  
Pen & ink on paper. 13 x 20 cm. Museu Thermàlia,  
Caldes de Montbui.

**OPP.54:621**; PE.17\*:153p

**Jeune homme au barretina.** Perpignan. 3-  
September/1954. Crayons [Oic]. S/U. Private  
collection.

**OPP.54:623**; PE.17:157p





**Un matin au harem (Pour Jacques de Lazerme)**. Perpignan. 8-September/1954. Color pencil & gouache on paper. 46,5 x 62,5 cm. Private collection. Formerly Sotheby's. #73, PF7029, 12/13/07.

**OPP.54:270**; NY.21g\*:73; PE.17:146p

**Portrait de la veuve de Manollo (Totote Hugué)**. Perpignan. 9-September/1954. Conté crayon & charcoal on paper. 65 x 50 cm. Museu Termàlia, Caldes de Montbui.

**OPP.54:504**; PP.54:227c; MD.02:30p; PE.17\*:111p





**Empreintes de rouge à lèvres.** Perpignan. 9-September/1954. Lipstick & ink on paper. 28,6 by 22,2 cm. Drouot. #457, 107028, 07/23/20.

**OPP.54:654**

**Dédicace (À Raymond Fabre).** Perpignan. 28-September/1954. Ink on photograph. S/U. Private collection.

**OPP.54:620**



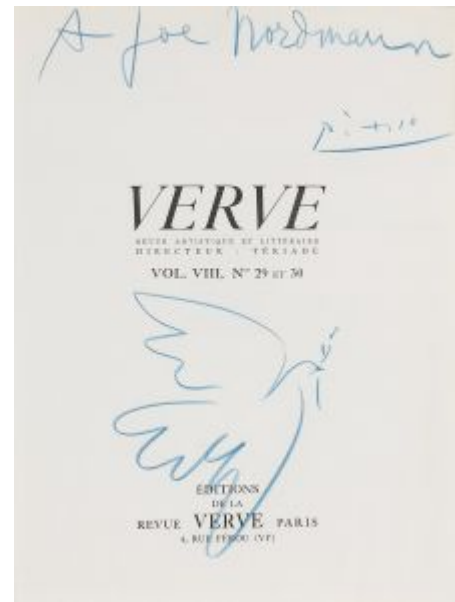


**Jacqueline.** [Vallauris]. [October]/1954. Oil on canvas. 93,4 x 67,9 cm. Private collection. Formerly Christie's. #493, 05/13/99.

**OPP.54:147**

**Colombe de la Paix (À Joe Nordmann).** Vallauris. Post-September/1954. Blue pencil on page of Verve, vol. 8, No. 29/30, 09/54. 3,5 x 26 cm. Sotheby's. #101, N11161, 11/14/23. Formerly Hélène Bailly Gallery.

**OPP.54:551**





**Jacqueline aux jambes repliées (Pour ma chère Jacqueline)**. Vallauris. 5-October/1954. Oil & charcoal on canvas. 92,5 x 73 cm. Catherine Hutin-Blay Collection, Paris. Formerly Jacqueline Roque Picasso Collection.

**OPP.54:004**; PP.54:228; Z.XVI:326; BA.90a\*:2; DD.61:185p; MA.91a\*:2; MM.06\*:33; MR.03\*:91p; PA.82a\*:n/a; PD.19\*:6; PJ.14\*:39p; TO.04:58p; WR.96:451p

---

**Dédicace et signature.** Cannes. 5-October/1954. Ink on paper. 49,5 x 42,3 cm. Espace Tajan. #26, 2121, 03/17/21.

**OPP.54:635**





**Femme accroupie II (Jacqueline)**. Vallauris. 8-October/1954. Oil on canvas. 146 x 114 cm. Sotheby's. #55, L17006, 06/21/17. Formerly Galerie Fabien Boulakia. 2009; Opera Gallery. 2008; Christie's. #44, 1075, 05/07/02; Maya Widmaier Picasso Collection, Paris.

**OPP.54:057**; PP.54:231; BO.00\*:29; HP.64:63p; MD.02\*:325p; WW.91:514p

**Jacqueline accroupie**. Vallauris. 8-October/1954. Oil on canvas. 146 x 114 cm. Christie's. #39A, 15004, 11/13/17. Formerly Galerie Malingue. 2009.

**OPP.54:202**; PP.54:230; Z.XVI:329; BA.60c\*:21; DD.61:246p; GP.96:324p; JL.66\*:234; JR.10:204p; PA.84e\*:15; WW.91:515p





**Jacqueline assise.** Vallauris. 8-October/1954. Oil on canvas. 146 x 114 cm. Museo Picasso, Málaga. Gift of Christine Ruiz-Picasso.

**OPP.54:229**; MPM:1.9.A; PP.54:229; Z.XVI:328;  
DD.61:246p; DP.20\*:160; GS.03:1.31; NC.17\*:132;  
WR.96:446p

**Portrait de Jacqueline au rocking-chair et foulard noir (Pour Jacqueline aimée).** Vallauris. 11-October/1954. Oil on canvas. 92 x 73 cm. Catherine Hutin-Blay Collection, Paris. Formerly Estate of Jacqueline Roque Picasso.

**OPP.54:183**; PP.54:233; Z.XVI:331; BA.60c\*:n/a;  
BA.90a\*:4; DD.61:246p; EC.16\*:161; GC.07:160p;  
GP.96:323p; JB.65:14; JL.71:270p; LE.07\*:69;  
MA.91a\*:4; MM.06\*:35; MR.03\*:95p; MR.59\*:53;  
NC.86\*:n/a; NI.83\*:n/a; PA.82a\*:n/a; PD.09:448p;  
PD.19\*:30; PI.03:30; PJ.14\*:45p; QP.64:247p;  
RP.60\*:195; TO.14\*:89; UP.00:992; WR.80\*:423p;  
WR.96:453p





**Femme accroupie (Jacqueline)**. Vallauris. [June] 14-October/1954. Oil & Ripolin on canvas. 92,2 x 73 cm. Sotheby's. #1017, HK1138, 10/09/21. Formerly Mr. and Mrs. Allan D. Emil Collection, NY.

**OPP.54:351**; PP.54:234; Z.XVI:330; EG.66\*:27p; JR.62\*:7.4; NY.57c\*:n/a; NY.64f\*:n/a; NY.71b\*:67; NY.75b\*:n/a; WC.62\*:68

---

**Trois personnages**. Vallauris. 14-October/1954. Pen & India ink on paper. 26,7 x 20,8 cm. Bonhams. #38AR, 24743, 03/01/18.

**OPP.54:547**; PP.54:235; Z.XVI:332







**Jacqueline accroupie II.** Vallauris. 14-October/1954. Oil on canvas. 90,5 x 72 cm. Catherine Hutin-Blay Collection, Paris. Formerly Jacqueline Roque Picasso Collection.

**OPP.54:601**; PD.19\*:65

**Callichromie d'après le gouache *Une femme de Majorque*.** Vallauris. 15-October/1954. Callichromy. 60 x 47 cm. Private collection.

**OPP.54:600**; PP.54:227a; Z.XVI:334





**Femme se tenant les genoux (inachevé) (Jacqueline).**  
Vallauris. 16-October/1954. Oil on canvas. 146 x 114 cm.  
Private collection.

**OPP.54:393**; JR.10\*:203p

**Tête de femme (Jacqueline).** Vallauris. 18-  
October/1954. India ink on paper. 35,5 x 27 cm. E  
and R Cyzer 20th Century Art.

**OPP.54:384**; PP.54:236; Z.XVI:335; WR.96:450p





**Notre-Dame de Paris.** [Paris]. 25-October/1954. Oil on canvas. 65,5 x 53,7 cm. Bonhams. #31AR, 19954, 02/07/12. Formerly Christie's. #0058, 7404, 06/18/07; Christie's. #499, 05/13/99.

**OPP.54:148**; PP.54:236a; JL.66\*:236; ZU.89\*:n/a

**Tête de femme.** Paris. 27-October/1954. Oil on canvas [Oic]. [65 x 53,5] 64,9 x 53,7 cm. Private collection. Formerly Christie's. #487, 9162, 05/13/99.

**OPP.54:374**; PP.54:236b; NY.71b\*:70





**Buste de femme (Jacqueline)**. Paris. 29-October/1954.  
Oil on canvas. 73 x 60 cm. Sotheby's. #27, L09606,  
06/24/09.

**OPP.54:295**; AC.05\*:n/a; MA.77b\*:n/a; MA.84\*:n/a;  
ME.78\*:n/a; TK.80\*:15

**Tête de femme II (Jacqueline)**. Paris. 2-  
November/1954. Oil on canvas. 73 x 60 cm. Marina  
Picasso Collection. (Inv 13296). Courtesy Galerie Jan  
Krugier, Geneva.

**OPP.54:349**; PP.54:236c; GS.85\*:117





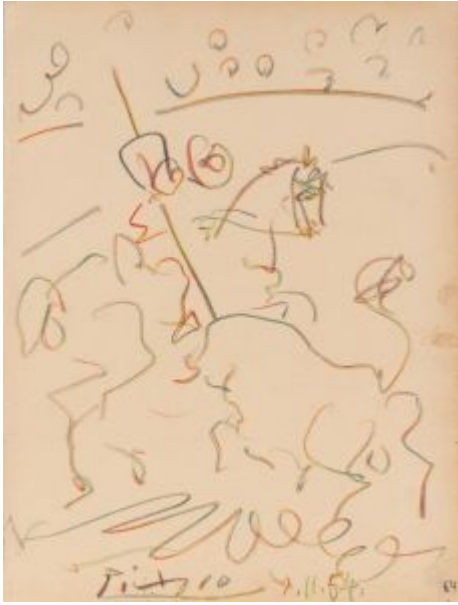
**Dédicace (à Mademoiselle M. Schuir).** Paris. 3-November/1954. Colored chalk front page of Claude Roy, *La guerre et la paix*. 29,5 x 37,5 cm. Private collection.

**OPP.54:656**

**Jacqueline assise dans un rocking-chair (Este cuadro es para Jacqueline con muchos besos más).** [Paris]. 9-November/1954. Oil & charcoal on canvas. 145 x 115 cm. Catherine Hutin-Blay Collection, Paris. Formerly Jacqueline Roque Picasso Collection.

**OPP.54:182**; PP.54:232; Z.XVI:327; AM.94:18; BA.60c\*:n/a; BA.90a\*:43; DD.61:246p; DQ.74:141p; GP.96:322p; JL.66\*:n/a; MA.91a\*:3; MM.06\*:34; MR.03\*:93p; PA.82a\*:n/a; PD.09:386p; PD.19\*:48; PJ.14\*:41p; QP.64:239p; RS.88:149p; UP.00:991





**Taumachie.** Paris. 9-November/1954. Color crayons on paper. 32,5 x 24,5 cm. Sotheby's. #156, L05009, 06/21/05.

**OPP.54:193**

---

**Nu couché II.** Paris. 15-November/1954. Pen & India ink. 21 x 27 cm. Musée Picasso, Paris. Sketchbook 1073.

**OPP.54:067**; MPP:1883.02r; PP.54:240; BL.96:51.02r





**Nu couché III.** Paris. 15-November/1954. Pen & India ink. 21 x 27 cm. Musée Picasso, Paris. Sketchbook 1073.

**OPP.54:069**; MPP:1883.03r; PP.54:242; BL.96:51.03r



**Nu couché IV.** Paris. 15-November/1954. Pen & India ink. 21 x 27 cm. Musée Picasso, Paris. Sketchbook 1073.

**OPP.54:071**; MPP:1883.04r; PP.54:244; BL.96:51.04r

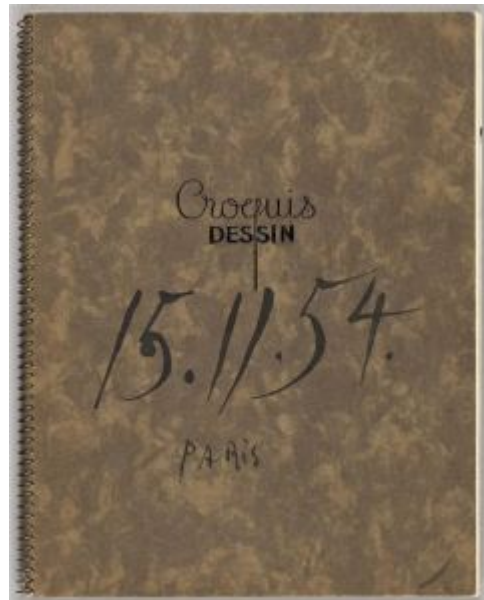


**Nu couché VI.** Paris. 15-November/1954. Pen & India ink. 21 x 27 cm. Musée Picasso, Paris. Sketchbook 1073.

**OPP.54:075**; MPP:1883.06r; PP.54:248; BL.96:51.06r

**Couverture.** Paris. 15-November/1954. Pen & India ink on cardboard. 27 x 21. Musée Picasso, Paris. Sketchbook 1073.

**OPP.54:415**; MPP:1883.c1; PP.54:237; BL.96:51.c1







**Chevalet et chiffons I (Étude).** Paris. 15-November/1954.  
Pen & India ink on paper. 27 x 21. Musée Picasso, Paris.  
Sketchbook 1073.

**OPP.54:416**; MPP:1883.01r; PP.54:238; BL.96:51.01r

**Le couple.** Paris. 15-November/1954. Ink on on book cover of Pierre Berthorrel, L'amour au microscope. 26,9 x 20,9 cm. Sotheby's. #11, PF0036, 12/01/20.

**OPP.54:634**





**Caricatures V~III.** Paris. 15~23-November/1954. Pen & India ink. 21 x 27 cm. Musée Picasso, Paris. Sketchbook 1073.

**OPP.54:073**; MPP:1883.05r; PP.54:246; BL.96:51.05r

**Chevalet et chiffon.** Paris. 18-November/1954. Oil on canvas. 210 x 124 cm. Private collection.

**OPP.54:331**; TO.14\*:72; TO.99\*:106





**Chevalet et chiffons (Étude) I.** Paris. 19-November/1954.  
Pen & India ink wash. 27 x 21 cm. Musée Picasso, Paris.  
Sketchbook 1073.

**OPP.54:076**; MPP:1883.07r; PP.54:249; BL.96:51.07r

**Chevalet et chiffons (Étude) II.** Paris. 19-  
November/1954. Pen & India ink wash. 27 x 21 cm.  
Musée Picasso, Paris. Sketchbook 1073.

**OPP.54:077**; MPP:1883.08r; PP.54:250;  
BL.96:51.08r





**Chevalet et chiffons III (Étude)**. Paris. 19-  
November/1954. Pen & India ink on paper. 27 x 21. Musée  
Picasso, Paris. Sketchbook 1073.

**OPP.54:418**; MPP:1883.09r; PP.54:252; BL.96:51.09r

**Cavalier en armure III**. Paris. [19] 20-  
November/1954. Pen & India ink on paper. 27 x 21.  
Musée Picasso, Paris. Sketchbook 1073.

**OPP.54:417**; MPP:1883.08v; PP.54:251;  
BL.96:51.08v





**Cavalier à la lance II.** Paris. 20-November/1954. Pen & India ink on paper. 27 x 21. Musée Picasso, Paris. Sketchbook 1073.

**OPP.54:419**; MPP:1883.09v; PP.54:253; BL.96:51.09v

**Cavalier en armure I.** Paris. 20-November/1954. Pen & India ink on paper. 27 x 21. Musée Picasso, Paris. Sketchbook 1073.

**OPP.54:420**; MPP:1883.10r; PP.54:254; BL.96:51.10r





**Portrait de Jacqueline.** Paris. 20-November/1954. Pen & India ink on paper. 27 x 21. Musée Picasso, Paris. Sketchbook 1073.

**OPP.54:421**; MPP:1883.11r; PP.54:255; BL.96:51.11r

**Scène de taumachie.** Paris. 21-November/1954. White earthenware round cupel, engraving accentuated with oxidized paraffin, glaze bath, black enamel underside, painted in ivory, brown, green & bronze-colored black, edition 100. 18 cm. Sotheby's. #111, W03703, 03/20/03.

**OPP.54:038**; AR:238; B.III:49;  
CE.04\*:261





**Scène de tauromachie.** Paris. 21-November/1954. White earthenware round cupel, decoration in engobes under partial brushed glaze, grey patina underside, painted in brown, yellow & black, edition 150. 18 cm. Sotheby's. #253, W05711, 10/26/05.

**OPP.54:196**; AR:241

---

**Nu couché II.** Paris. 23-November/1954. Pen & India ink. 21 x 27 cm. Musée Picasso, Paris. Sketchbook 1073.

**OPP.54:068**; MPP:1883.02v; PP.54:241; BL.96:51.02v



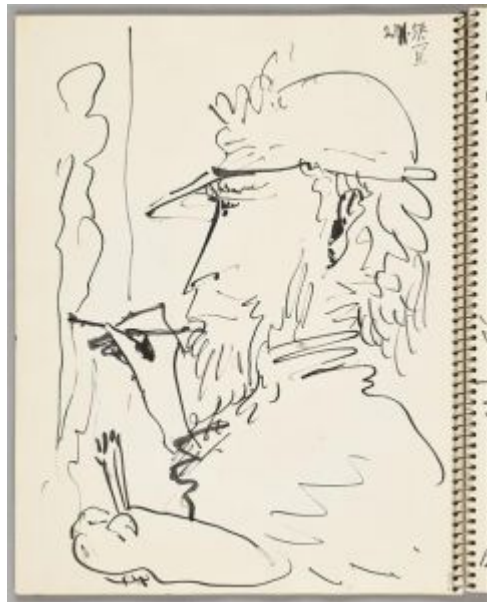


**Cheval de profil II.** Paris. 23-November/1954.  
Pen & India ink. 21 x 27 cm. Musée Picasso, Paris.  
Sketchbook 1073.

**OPP.54:070**; MPP:1883.03v; PP.54:243;  
BL.96:51.03v

**Le peintre au travail II.** Paris. 23-November/1954.  
Pen & India ink. 27 x 21 cm. Musée Picasso, Paris.  
Sketchbook 1073.

**OPP.54:072**; MPP:1883.04v; PP.54:245;  
BL.96:51.04v







**Tête d'homme barbu I.** Paris. 25-November/1954. Pen & India ink. 27 x 21 cm. Musée Picasso, Paris. Sketchbook 1073.

**OPP.54:066**; MPP:1883.01v; PP.54:239; BL.96:51.01v

**Caricatures I.** Paris. 25-November/1954. Pen & India ink. 27 x 21 cm. Musée Picasso, Paris. Sketchbook 1073.

**OPP.54:074**; MPP:1883.05v; PP.54:247; BL.96:51.05v





**Portrait de Jacqueline de profil IV.** Paris. 25-November/1954. Pen & India ink on paper. 27 x 21. Musée Picasso, Paris. Sketchbook 1073.

**OPP.54:265**; MPP:1883.13r; PP.54:259; BL.96:51.13.r

**Portrait de Jacqueline III.** Vallauris. 25-November/1954. Pen & India ink on paper. 27 x 21. Musée Picasso, Paris. Sketchbook 1073.

**OPP.54:391**; MPP:1883.12r; PP.54:258; BL.96:51.12r





**Portrait de Jacqueline de profil IV.** Paris. 25-November/1954. Pen & India ink on paper. 27 x 21. Musée Picasso, Paris. Sketchbook 1073.

**OPP.54:413**; MPP:1883.14r; PP.54:260; BL.96:51.14r; PE.01:42p

**Chevalier et page.** Paris. 25-November/1954. India ink on paper. 24 x 30 cm. Private collection.

**OPP.54:566**; PP.54:257; Z.XVI:336





**Deux personnages.** Paris. 25-November/1954. India ink on paper.  
43 x 29 cm. Private collection.

**OPP.54:599**; PP.54:256; Z.XVI:333

---

**Femme couchée.** Paris. 26-  
November/1954. Oil on canvas. [130]  
130,5 x 162 cm. Catherine Hutin-Blay  
Collection, Paris. Formerly Jacqueline  
Roque Picasso Collection.

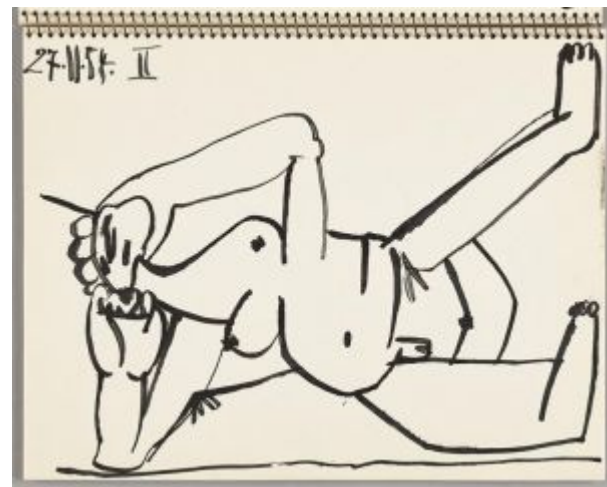
**OPP.54:001**; PP.54:261; GL.84\*:31;  
MM.85a\*:40; WW.91:521p





**Les femmes d'Alger (d'après Delacroix) (Étude) I.** Paris. 27-November/1954. Pen & India ink wash. 21 x 27 cm. Musée Picasso, Paris. Sketchbook 1073.

**OPP.54:078**; MPP:1883.15r; PP.54:262; BL.96:51.15r



**Les femmes d'Alger (d'après Delacroix) (Étude) II.** Paris. 27-November/1954. Pen & India ink. 21 x 27 cm. Musée Picasso, Paris. Sketchbook 1073.

**OPP.54:079**; MPP:1883.16r; PP.54:263; BL.96:51.16r



**Les femmes d'Alger (d'après Delacroix) (Étude) III.** Paris. 27-November/1954. Pen & India ink. 21 x 27 cm. Musée Picasso, Paris. Sketchbook 1073.

**OPP.54:080**; MPP:1883.17r; PP.54:264;  
BL.96:51.17r; PA.21f\*:174

**Les femmes d'Alger (d'après Delacroix) (Étude) IV.** Paris. 27-November/1954. Pen & India ink. 21 x 27 cm. Musée Picasso, Paris. Sketchbook 1073.

**OPP.54:081**; MPP:1883.18r; PP.54:265;  
BL.96:51.18r





**Nu couché I.** Paris. 1-December/1954. Pen & black ink on paper. 34,5 x 43,5 [43] cm. Christie's. #153, 1780, 05/03/06.

**OPP.54:082**; PP.54:266; Z.XVI:338;  
CH.03a\*:115; ST.88\*:208

**Nu couché II.** Paris. 1-December/1954. India ink on paper. 34,5 x 43 cm. E and R Cyzer 20th Century Art. 2008. Formerly Waddington Galleries.

**OPP.54:083**; PP.54:267; Z.XVI:339;  
BS.84c\*:70; BS.86a\*:81; LO.93d\*:39;  
LO.97\*:n/a; LU.93:291; WI.71\*:40





**Femme nue couchée III.** Paris. 1-December/1954. Pen & ink on paper. [34,5 x 43] 35 x 43 cm. Sotheby's. #417, N10148, 11/13/19.

**OPP.54:084**; PP.54:268; Z.XVI:340; BS.84c\*:71; MN.75\*:n/a; PA.82d\*:15

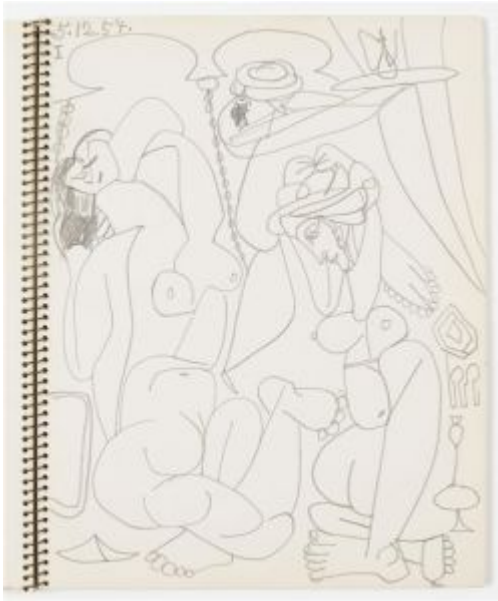
---

**Nu couché III.** Paris. 1-December/1954. Pen & India ink. 34,5 x 43 cm. Musée Picasso, Paris. Dation 1979.

**OPP.54:085**; MPP:1430; PP.54:269; Z.XVI:341; PA.04j\*:n/a; RP.06\*:n/a







**Les femmes d'Alger (d'après Delacroix) (Étude) I.**

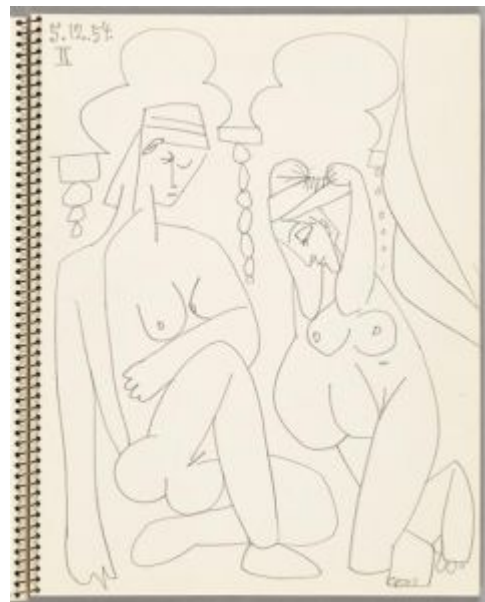
Paris, 5-December/1954. Pencil in sketchbook. 27 x 21 cm.  
Musée Picasso, Paris. Sketchbook 1073.

**OPP.54:155**; MPP:1883.19r; PP.54:270; BL.9651:19r;  
PP.20\*:247; TG.88:24

**Les femmes d'Alger (d'après Delacroix) (Étude)**

**II.** Paris, 5-December/1954. Pencil in sketchbook. 27 x 21 cm. Musée Picasso, Paris. Sketchbook 1073.

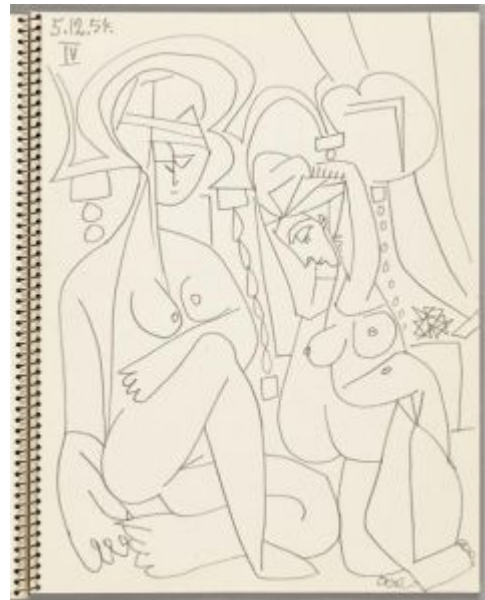
**OPP.54:163**; MPP:1883.20r; PP.54:271;  
BL.96:51.20r





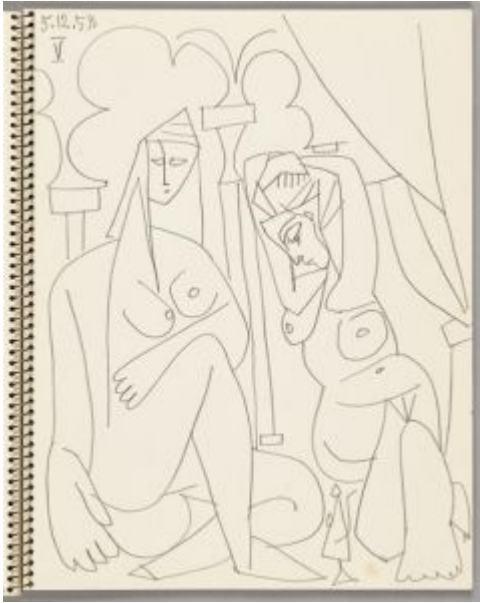
**Les femmes d'Alger (d'après Delacroix) (Étude) III.**  
Paris. 5-December/1954. Pencil in sketchbook. 27 x 21 cm.  
Musée Picasso, Paris. Sketchbook 1073.

**OPP.54:164**; MPP:1883.21r; PP.54:272; BL.96:51.21r;  
PP.20\*:247



**Les femmes d'Alger (d'après Delacroix) (Étude) IV.**  
Paris. 5-December/1954. Pencil in sketchbook. 27 x 21 cm. Musée Picasso, Paris. Sketchbook 1073.

**OPP.54:165**; MPP:1883.22r; PP.54:273;  
BL.96:51.22r

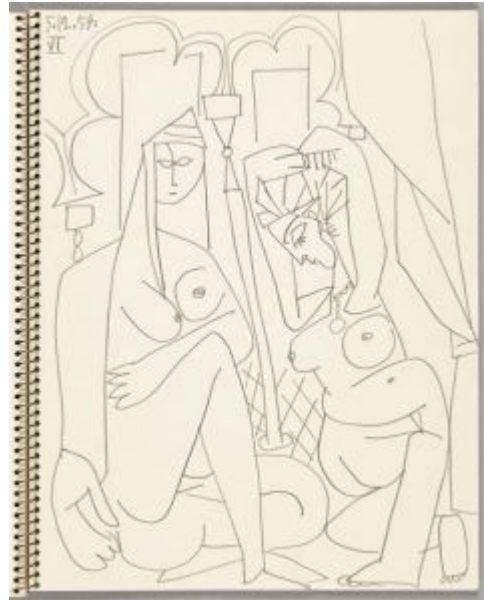


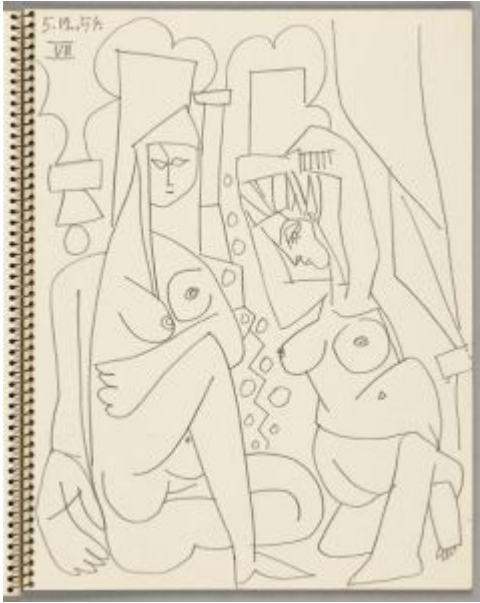
**Les femmes d'Alger (d'après Delacroix) (Étude) V.** Paris. 5-December/1954. Pencil in sketchbook. 27 x 21 cm. Musée Picasso, Paris. Sketchbook 1073.

**OPP.54:166**; MPP:1883.23r; PP.54:274; BL.96:51.23r

**Les femmes d'Alger (d'après Delacroix) (Étude) VI.** Paris. 5-December/1954. Pencil in sketchbook. 27 x 21 cm. Musée Picasso, Paris. Sketchbook 1073.

**OPP.54:167**; MPP:1883.24r; PP.54:275; BL.96:51.24r



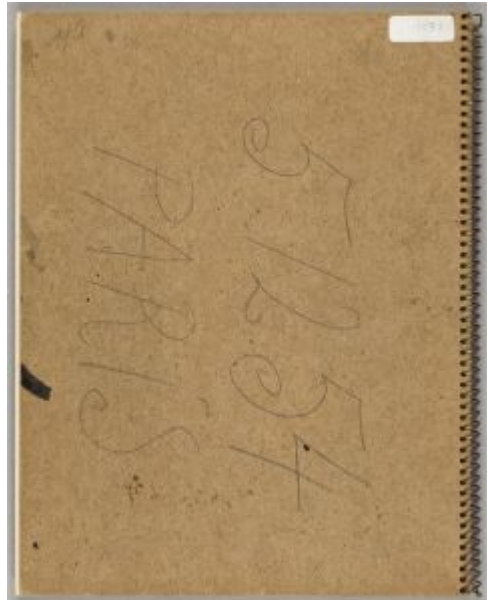


**Les femmes d'Alger (d'après Delacroix) (Étude) VII.**  
Paris. 5-December/1954. Pencil in sketchbook. 27 x 21 cm.  
Musée Picasso, Paris. Sketchbook 1073.

**OPP.54:168**; MPP:1883.25r; PP.54:276; BL.96:51.25r;  
PA.19d\*:334

**Couverture.** Paris. 5-December/1954. Pencil in  
sketchbook. 27 x 21 cm. Musée Picasso, Paris.  
Sketchbook 1073.

**OPP.54:169**; MPP:1883.c4; PP.54:277; BL.96:51.c4





**L'Œil.** Paris. 6-December/1954. Pen & black ink. 35,6 x 26 cm. Private collection. Formerly Christie's. #108, 05/10/93.

**OPP.54:170**; PP.54:278

**Tête de femme (Jacqueline).** Paris. 9-December/1954. India ink on paper. 43 x 34,5 cm. Christie's. #146, 1606, 05/05/05. Formerly Marina Picasso Collection.

**OPP.54:171**; PP.54:279; Z.XVI:337; LO.84a\*:39; NY.96b\*:n/a; WR.96\*:450p





**Les femmes d'Alger (d'après Delacroix) (Toile A)**. Paris. 13-December/1954. Oil on canvas. 61,5 x 72,2 cm. Wadsworth Atheneum Museum of Art, Hartford, CT. (Inv 1994.2.2). Gift of the Carey Walker Foundation Formerly Dr. Herschel Carey Walker Collection, NY.

**OPP.54:174**; PP.54:280; Z.XVI:342; AB.57\*:108; EG.66\*:23p; GB.87:225; JR.62\*:7.6; JV.06:143p; KG.71:160; KG.85:160; LS.75:75; MJ.55\*:127; NY.71b\*:81; PE.01a\*:1; PJ.14\*:51p; RR.09\*:38; UP.00:1001; WR.96:454p

---

**Les femmes d'Alger (d'après Delacroix) (Toile B)**. Paris. 13-December/1954. Oil on canvas. 60 x 73 cm. Wilbur D. May, Beverly Hills, CA.

**OPP.54:175**; PP.54:281; Z.XVI:343; AB.57\*:108; HN.13:214p; JR.62\*:7.7; KG.71:161; KG.85:161; LS.75:76; MJ.55\*:127; SG.96:5.7





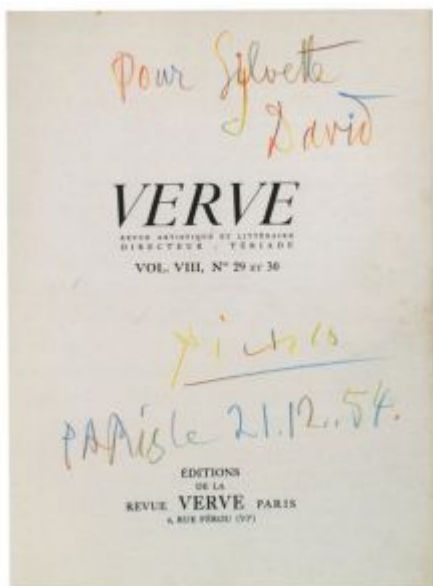
**Les femmes d'Alger (d'après Delacroix) (Étude) II.** Paris. 21-December/1954. India ink on paper. 34,5 x 43,5 cm. Musée Picasso, Paris. Dation 1979.

**OPP.54:172**; MPP:1431; PP.54:282; Z.XVI:344; BA.03b\*:n/a; BA.90a\*:57; JL.66\*:n/a; JL.67b:94p; JL.71:270p; MA.08a\*:n/a; MA.91a\*:72; PD.09:412p; PE.01a\*:89; PP.20\*:248; RP.06\*:111; SD.05\*:125; TO.04:60p; UP.00:996; WR.96:455p

**Clown et femme nue.** Paris. 21-December/1954. Lithograph in colors on wove paper, edition 75 [After *Clown et femme nue*]. 34,6 x 26,4 cm. Christie's. #0260, 1965, 02/07/08.

**OPP.54:271**; PE.17:135p; YP.13\*:61





**Dédicace (Pour Sylvette David).** Paris. 21-December/1954. Ink on page of Verve, vol. 8, No. 29/30, 09/54. 36,3 x 27 cm. Sylvette David Collection. Gift from the artist.

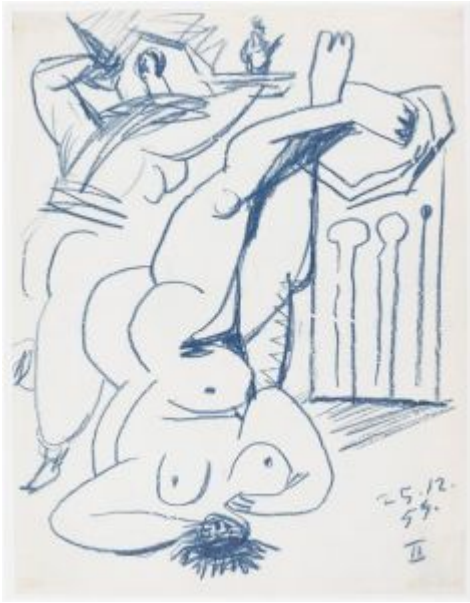
**OPP.54:441**; GB.14\*:2

**Jacqueline.** Paris. 22-December/1954. Ink on paper. 27,5 x 21 cm. Private collection.

**OPP.54:485**; PJ.14\*:46p







**Les femmes d'Alger (d'après Delacroix) (Étude) II.** Paris. 25-December/1954. Blue crayon. 27 x 21 cm. Musée Picasso, Paris. Dation 1979.

**OPP.54:086**; MPP:1433; PP.54:284



**Les femmes d'Alger (d'après Delacroix) (Étude) III.** Paris. 25-December/1954. Blue crayon. 27 x 21 cm. Musée Picasso, Paris. Dation 1979.

**OPP.54:087**; MPP:1434; PP.54:285; PA.21f\*:157



**Les femmes d'Alger (d'après Delacroix) (Étude) IV.** Paris. 25-December/1954. Blue crayon. 21 x 27 cm. Musée Picasso, Paris. Dation 1979.

**OPP.54:088**; MPP:1435; PP.54:286; BA.03b\*:n/a

**Les femmes d'Alger (d'après Delacroix) (Étude) I.** Paris. 25-December/1954. Blue pencil on paper. 21 x 27 cm. Musée Picasso, Paris. Dation 1979.

**OPP.54:173**; MPP:1432; PP.54:283; PA.79a\*:555; PE.01a\*:90; RP.06\*:112; SG.96:5.8





**Les femmes d'Alger (d'après Delacroix) (Étude) II.** Paris. 26-December/1954. Pen & India ink on squared paper. 21 x 27 cm. Musée Picasso, Paris. Dation 1979.

**OPP.54:089**; MPP:1436; PP.54:287; PP.20\*:249

---

**Les femmes d'Alger (d'après Delacroix) (Étude) III.** Paris. 26-December/1954. Pen & India ink on squared paper. 21 x 27 cm. Musée Picasso, Paris. Dation 1979.

**OPP.54:090**; MPP:1437; PP.54:288





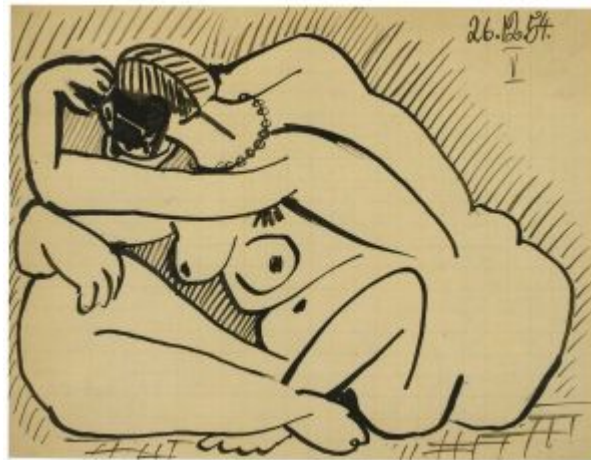
**Les femmes d'Alger (d'après Delacroix) (Étude) IV.** Paris. 26-December/1954. Pen & India ink on squared paper. 21 x 27 cm. Musée Picasso, Paris. Dation 1979.

**OPP.54:091**; MPP:1438; PP.54:289

---

**Les femmes d'Alger (d'après Delacroix) (Étude) V.** Paris. 26-December/1954. Pen & India ink on squared paper. 21 x 27 cm. Musée Picasso, Paris. Dation 1979.

**OPP.54:092**; MPP:1439; PP.54:290;  
PP.20\*:251; RP.06\*:113; SD.05\*:126





**Les femmes d'Alger (d'après Delacroix) (Étude) VI.** Paris. 26-December/1954. Pen & India ink on squared paper. 21 x 27 cm. Musée Picasso, Paris. Dation 1979.

**OPP.54:093**; MPP:1440; PP.54:291

---

**Les femmes d'Alger (d'après Delacroix) (Étude) IX.** Paris. 26-December/1954. Pen & India ink on squared paper. 21 x 27 cm. Musée Picasso, Paris. Dation 1979.

**OPP.54:094**; MPP:1441; PP.54:292;  
LE.21\*:194



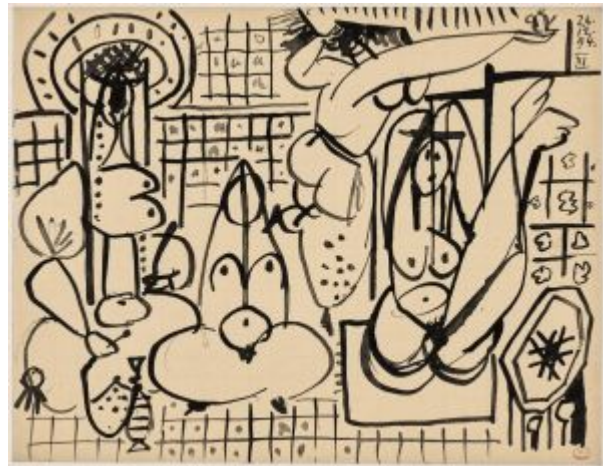


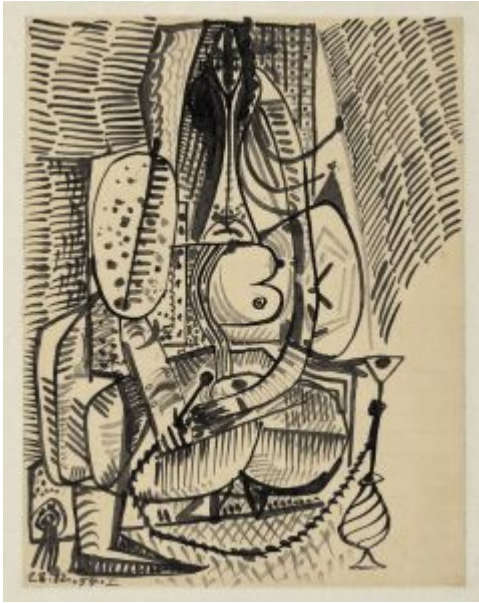
**Les femmes d'Alger (d'après Delacroix) (Étude) X.** Paris. 26-December/1954. Pen & India ink on squared paper. 21 x 27 cm. Musée Picasso, Paris. Dation 1979.

**OPP.54:095**; MPP:1442; PP.54:293; RP.06\*:n/a

**Les femmes d'Alger (d'après Delacroix) (Étude) XI.** Paris. 26-December/1954. Pen & India ink on squared paper. 21 x 27 cm. Musée Picasso, Paris. Dation 1979.

**OPP.54:096**; MPP:1443; PP.54:294; PA.79a\*:556; PD.09:413p; PP.20\*:250; UP.00:997



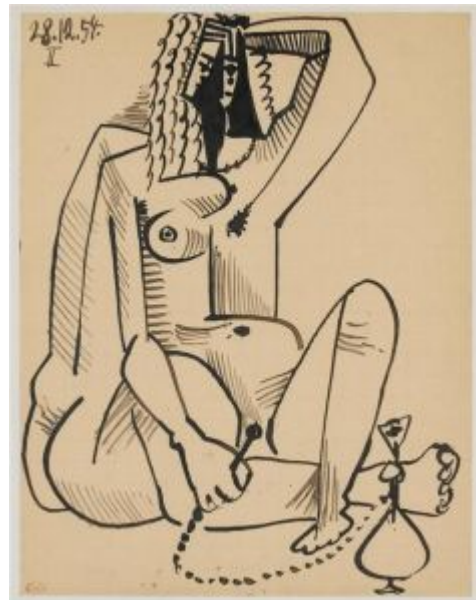


**Les femmes d'Alger (d'après Delacroix) (Étude) I.** Paris. 28-December/1954. Pen & India ink on squared paper. 27 x 21 cm. Musée Picasso, Paris. Dation 1979.

**OPP.54:097**; MPP:1444; PP.54:296; PA.79a\*:557

**Les femmes d'Alger (d'après Delacroix) (Étude) II.** Paris. 28-December/1954. Pen & India ink on squared paper. 27 x 21 cm. Musée Picasso, Paris. Dation 1979.

**OPP.54:098**; MPP:1445; PP.54:297; PA.79a\*:558; RP.06\*:115; SD.05\*:128





**Les femmes d'Alger (d'après Delacroix) (Étude) III.**

Paris. 28-December/1954. Wash, pen & India ink on squared paper. 27 x 21 cm. Musée Picasso, Paris. Dation 1979.

**OPP.54:099**; MPP:1446; PP.54:298; JO.06\*:n/a;  
ME.82a\*:133; ND.01\*:84; PA.79a\*:559; PP.20\*:254;  
RP.06\*:116

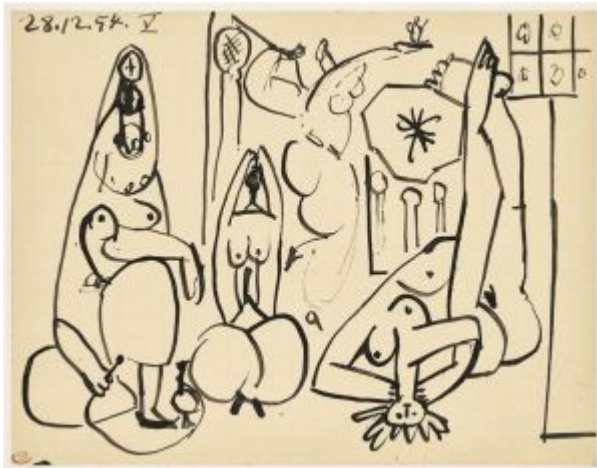
---

**Les femmes d'Alger (d'après Delacroix) (Étude) IV.** Paris. 28-December/1954. Pen & India ink on squared paper. 21 x 27 cm. Musée Picasso, Paris. Dation 1979.

**OPP.54:100**; MPP:1447; PP.54:299;  
ND.01\*:85; PA.79a\*:560





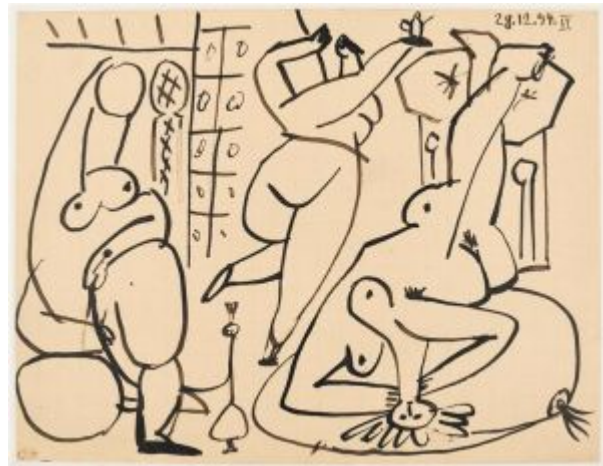


**Les femmes d'Alger (d'après Delacroix) (Étude) V.** Paris. 28-December/1954. Pen & India ink on squared paper. 21 x 27 cm. Musée Picasso, Paris. Dation 1979.

**OPP.54:101**; MPP:1448; PP.54:300; PA.79a\*:561

**Les femmes d'Alger (d'après Delacroix) (Étude) VI.** Paris. 28-December/1954. Pen & India ink on squared paper. 21 x 27 cm. Musée Picasso, Paris. Dation 1979.

**OPP.54:102**; MPP:1449; PP.54:301; ND.01\*:86; PA.79a\*:562





**Les femmes d'Alger (d'après Delacroix) (Étude) VII.** Paris. 28-December/1954. Pen & India ink on squared paper. 21 x 27 cm. Musée Picasso, Paris. Dation 1979.

**OPP.54:103**; MPP:1450; PP.54:302; LE.21\*:195; PA.79a\*:563; PE.01a\*:91; TG.88:22

---

**Les femmes d'Alger (d'après Delacroix) (Étude) VIII.** Paris. 28-December/1954. Pen & India ink on squared paper. 21 x 27 cm. Musée Picasso, Paris. Dation 1979.

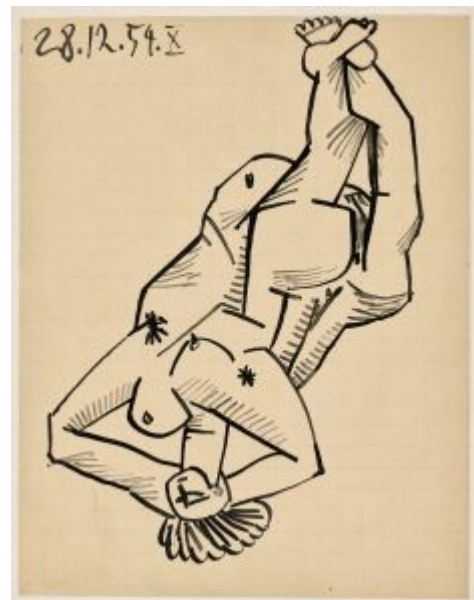
**OPP.54:104**; MPP:1451; PP.54:303; PA.79a\*:564





**Les femmes d'Alger (d'après Delacroix) (Étude) IX.** Paris. 28-December/1954. Pen & India ink on squared paper. 27 x 21 cm. Musée Picasso, Paris. Dation 1979.

**OPP.54:105**; MPP:1452; PP.54:304



**Les femmes d'Alger (d'après Delacroix) (Étude) X.** Paris. 28-December/1954. Pen & India ink on squared paper. 27 x 21 cm. Musée Picasso, Paris. Dation 1979.

**OPP.54:106**; MPP:1453; PP.54:305



**Les femmes d'Alger (d'après Delacroix) (Étude) XI.**

Paris. 28-December/1954. Pen & India ink on squared paper. 27 x 21 cm. Musée Picasso, Paris. Dation 1979.

**OPP.54:107**; MPP:1454; PP.54:306; AB.05b\*:n/a

**Les femmes d'Alger (d'après Delacroix) (Étude) XII.**

Paris. 28-December/1954. Pen & India ink on squared paper. 27 x 21 cm. Musée Picasso, Paris. Dation 1979.

**OPP.54:108**; MPP:1455; PP.54:307; AB.05b\*:n/a; SD.05\*:127





**Les femmes d'Alger (d'après Delacroix) (Étude) XIII.**  
Paris. 28-December/1954. Pen & India ink on squared paper.  
27 x 21 cm. Musée Picasso, Paris. Dation 1979.

**OPP.54:109**; MPP:1456; PP.54:308



**Les femmes d'Alger (d'après Delacroix) (Étude) XIV.**  
Paris. 28-December/1954. Pen & India ink on squared paper. 27 x 21 cm. Musée Picasso, Paris. Dation 1979.

**OPP.54:110**; MPP:1457; PP.54:309; PA.79a\*:565



**Les femmes d'Alger (d'après Delacroix) (Étude) XV.**

Paris. 28-December/1954. Pen & India ink on squared paper. 27 x 21 cm. Musée Picasso, Paris. Dation 1979.

**OPP.54:111**; MPP:1458; PP.54:310; PA.79a\*:566



**Les femmes d'Alger (d'après Delacroix) (Étude)**

**XVI.** Paris. 28-December/1954. Pen & India ink on squared paper. 27 x 21 cm. Musée Picasso, Paris. Dation 1979.

**OPP.54:112**; MPP:1459; PP.54:311; PA.79a\*:567



**Les femmes d'Alger (d'après Delacroix) (Toile C)**. Paris. 28-December/1954. Oil on canvas. 54 x 65 cm. Helly Nahmad Collection, Monaco/London. Formerly Victor W. Ganz Collection, NY; Loudmer. #29, 06/17/90.

**OPP.54:159**; PP.54:295; Z.XVI:345; AB.57\*:108; GP.88\*:3; GP.96:324p; HN.13\*:218p; JR.62\*:7.8; KG.71:162; KG.85:162; LO.98b\*:n/a; LS.75:79; MF.97:43p; MJ.55\*:127; PE.01a\*:2; PF.10\*:103; PJ.14\*:52p; RR.09\*:39; RT.99\*:66; TG.88\*:3; UP.00:1002

**Les femmes d'Alger (d'après Delacroix) (Étude) I**. Paris. 29-December/1954. Pen & India ink on squared paper. 21 x 27 cm. Musée Picasso, Paris. Dation 1979.

**OPP.54:113**; MPP:1460; PP.54:312





**Les femmes d'Alger (d'après Delacroix) (Étude) II.** Paris. 29-December/1954. Pen & India ink on squared paper. 21 x 27 cm. Musée Picasso, Paris. Dation 1979.

**OPP.54:114**; MPP:1461; PP.54:313; PA.19d\*:336

---

**Les femmes d'Alger (d'après Delacroix) (Étude) III.** Paris. 29-December/1954. Pen & India ink on squared paper. 21 x 27 cm. Musée Picasso, Paris. Dation 1979.

**OPP.54:115**; MPP:1462; PP.54:314; UP.00:995







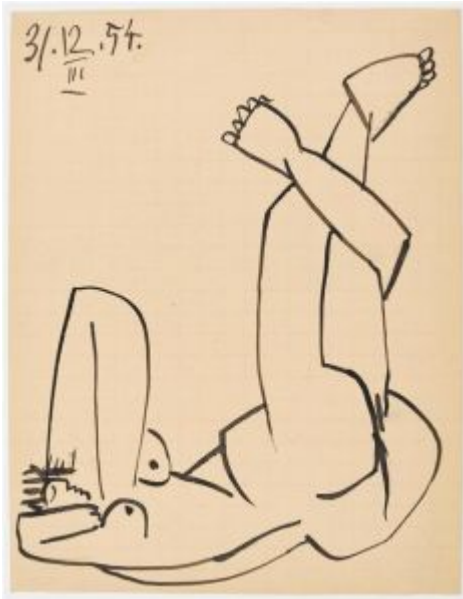
**Les femmes d'Alger (d'après Delacroix) (Étude) I.** Paris. 31-December/1954. Pen & India ink on squared paper. 27 x 21 cm. Musée Picasso, Paris. Dation 1979.

**OPP.54:116**; MPP:1463; PP.54:315; ND.01\*:87; PA.79a\*:568

**Les femmes d'Alger (d'après Delacroix) (Étude) II.** Paris. 31-December/1954. Pen & India ink on squared paper. 27 x 21 cm. Musée Picasso, Paris. Dation 1979.

**OPP.54:117**; MPP:1464; PP.54:316; PA.79a\*:569





**Les femmes d'Alger (d'après Delacroix) (Étude) III.**

Paris. 31-December/1954. Pen & India ink on squared paper.  
27 x 21 cm. Musée Picasso, Paris. Dation 1979.

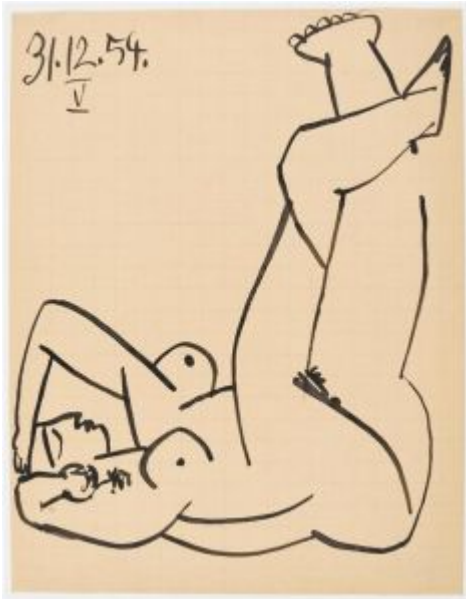
**OPP.54:118**; MPP:1465; PP.54:317



**Les femmes d'Alger (d'après Delacroix) (Étude)**

**IV.** Paris. 31-December/1954. Pen & India ink on  
squared paper. 27 x 21 cm. Musée Picasso, Paris.  
Dation 1979.

**OPP.54:119**; MPP:1466; PP.54:318



**Les femmes d'Alger (d'après Delacroix) (Étude) V.** Paris. 31-December/1954. Pen & India ink on squared paper. 27 x 21 cm. Musée Picasso, Paris. Dation 1979.

**OPP.54:120**; MPP:1467; PP.54:319



**Les femmes d'Alger (d'après Delacroix) (Étude) VI.** Paris. 31-December/1954. Pen & India ink on squared paper. 27 x 21 cm. Musée Picasso, Paris. Dation 1979.

**OPP.54:121**; MPP:1468; PP.54:320; MS.01\*:n/a



**Les femmes d'Alger (d'après Delacroix) (Étude) VII.**  
Paris. 31-December/1954. Pen & India ink on squared paper.  
27 x 21 cm. Musée Picasso, Paris. Dation 1979.

**OPP.54:122;** MPP:1469; PP.54:321; PA.19d\*:335

**Grand pichet gravé gris (Deux têtes et petite hibou).** Vallauris. 1954. White earthenware pitcher, engobe decoration, knife engraved under partial brushed glaze, painted in black, white & grey patina, edition 500. [28,5] 28 x 17 cm. Sotheby's. #461, N07717, 11/02/01.

**OPP.54:049;** AR:246





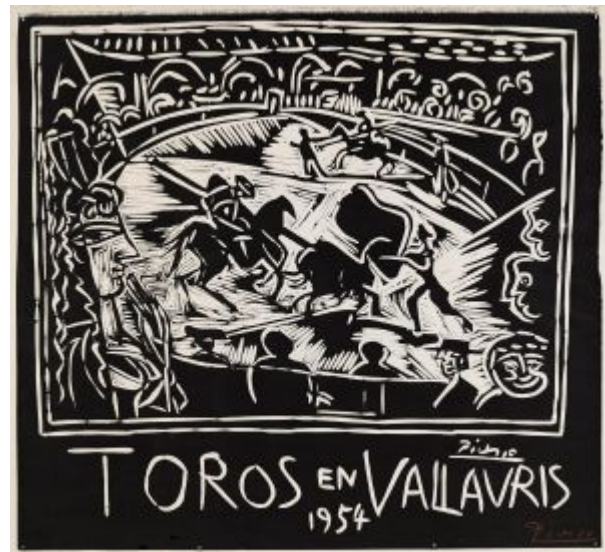
**Bouteille gravée.** Vallauris. 1954. White earthenware vase, decoration in engobes & paraffin, boring-rod engraved, white enamel, painted in black & beige, edition 100. [44,5] 42,5 x 16 cm. Christie's. #137, 9759, 12/11/03.

**OPP.54:146**; AR:248; IG.89\*:n/a

---

**Toros en Vallauris 1954.** Vallauris. 1954.  
Linoleum cut in color. 73,4 x 79,5 cm.  
Eckert Fine Art Galleries. 2005.

**OPP.54:160**; B.I:1264; Ba:1027;  
CE.04\*:71; JR.10\*:133p; MG.00:24;  
MM.11b\*:11; PA.21g\*:216p





**Le chevalier et la dame nue I.** Vallauris. Post-1-February/1954. Lithograph, edition 2000 [After *Le chevalier et la dame nue I*]. 49,5 x 32,3 cm. Concept Art Gallery. 2006.

**OPP.54:226**

**Le roi à cheval et modèle VII.** Vallauris. Post-31-January/1954. Lithograph, edition 2000 [After *Au cirque VII*]. 24,1 x 32,5 cm. Concept Art Gallery. 2006.

**OPP.54:227**





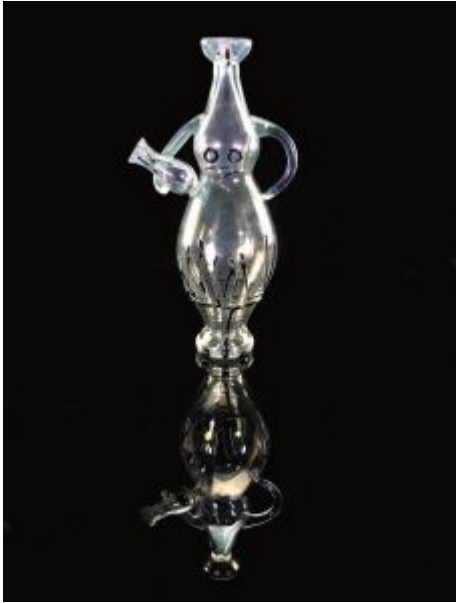
**Le peintre et son modèle I.** Vallauris. Post-3-February/1954. Lithograph, edition 2000 [After *Dans l'atelier I*]. 49,5 x 32,5 cm. Concept Art Gallery. 2006.

**OPP.54:228**; TG.88:12; UP.00:973

**Dans l'atelier II.** Vallauris. Post-3-February/1954. Lithograph on Arches, edition 75 [After *Dans l'atelier II*]. 24 x 32 cm. Christie's. #516, 7282, 09/20/06.

**OPP.54:232**





**Femme avec vase.** Vallauris. 1954. Blown glass & enamel vase. 40 cm. Sotheby's. #189, W06712, 10/19/06.

**OPP.54:233**

**Bacchanale: Le triomphe de Pan (d'après Poussin).** Vallauris. 1954. Offset lithograph [After *Bacchanale: Le triomphe de Pan (d'après Poussin)*]. 33 x 43,2 cm. Musée Granet, Ville d'Aix-en-Provence. On Deposit. Also Belgravia Gallery. 2007.

**OPP.54:234**





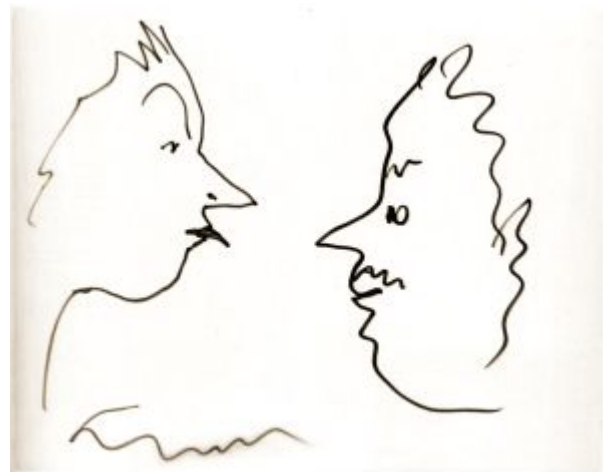


**Huit personnages.** Vallauris. 1954. Pen on paper.  
21 x 27 cm. Private collection.

**OPP.54:236**; BA.03a\*:246

**Deux profils tête à tête.** Vallauris. 1954.  
Felt-tip pen. 50,5 x 66 cm. Private  
collection.

**OPP.54:237**; BA.03a\*:252





**Homme: le pinceau entre les dents II.** Vallauris. 1954. India ink. 32 x 24 cm. Marina Picasso Collection. (Inv 5583). Courtesy Galerie Jan Krugier, Geneva.

**OPP.54:262**; PP.54:164; Z.XVI:264; BA.03a\*:368

---

**Personnages.** Vallauris. 1954. Photomontage laid down on grey paper. 39,4 x 29,8 cm. Sotheby's. #333, N08360, 11/08/07.

**OPP.54:266**





**Nature morte.** Vallauris. 1954. Glazed stoneware. 7,2 x 37,4 x 31,7 cm. The Museum of Modern Art, NYC. (Inv 2511.1967). Gift of R. Thornton Wilson.

**OPP.54:267**

---

**Femme assise.** Cannes. 1954. Blown glass. 45,7 cm. Rago Arts and Auction Center. 2008.

**OPP.54:268**





**Au cirque II.** Vallauris. Post-30-January/1954. Lithograph in colors, edition 75 [After *Au cirque II*]. 24,1 x 32,1 cm. Christie's. #0264, 1965, 02/07/08.

**OPP.54:273**

**Homme assis, femme au singe et pomme (pour Verve: Revue artistique et littéraire).** Cannes. 1954. Lithograph [After *Le singe et la pomme*]. 24 x 32 cm. Christie's. #324, 5309, 06/02/08.

**OPP.54:275; PE.17:134p**



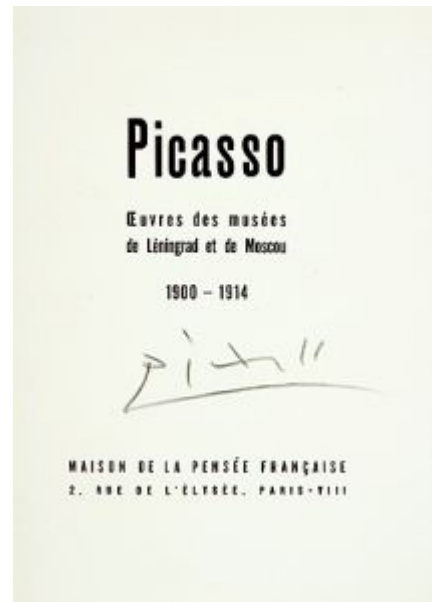


**Julius et Ethel Rosenberg.** Vallauris. Post-May/1954. Lithograph [After *Ethel et Julius Rosenberg*]. 47 x 33 cm. Artcurial. #923, 1211, 05/04/07.

**OPP.54:276**; PA.19d\*:232; PF.10:41p

**Dédicace.** Vallauris. 1954. Ink. S/U. Artcurial. #921, 1211, 05/04/07.

**OPP.54:277**





**La guerre.** Vallauris. [1954]. Lithograph. 43,2 x 30,5 cm. Belgravia Gallery. 2007.

**OPP.54:279**

---

**La comédie humaine III.** Vallauris. Post-30-January/1954. Colored lithograph, edition 75 [After *Clown et écuyère III*]. 26,7 x 32,8 cm. Goldmark Gallery. 2008.

**OPP.54:289**





**Peintre barbu et modèle.** Vallauris. Post-27-January/1954. Lithograph, edition 75 [After *Peintre barbu et modèle I*]. 23,8 x 32 cm. Christie's. #147, 7839, 03/31/10.

**OPP.54:290**

---

**Farol (Federico García Lorca, Chant funèbre).** Vallauris. 1954. Engraving, edition 220. S/U. Artcurial. #556, 1489, 11/24/08.

**OPP.54:298**





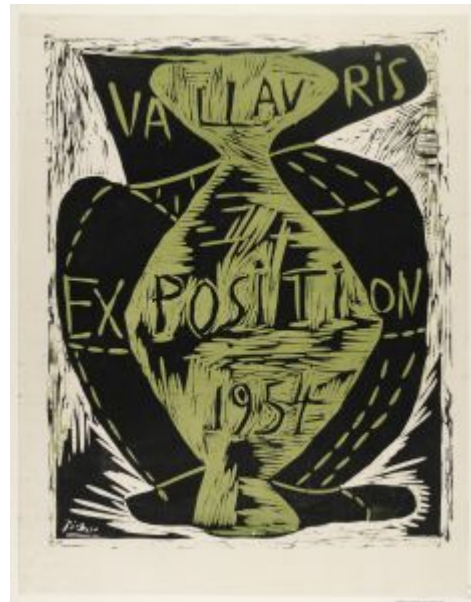
**Centaure.** Vallauris. [1959]. Mother-of-pearl blown glass. 29,8 cm. Christie's. #991, 5595, 11/17-20/09.

**OPP.54:299**

---

**Vallauris Exposition 1954.** Vallauris. 1954. Linoleum cut in color. 89,7 x 59,8 cm. Art Gallery of Ontario, Toronto. (Inv 94/538). Gift of Jane Dobell, 1993.

**OPP.54:300**; B.I:1263; Ba:1026.B; CC:12; GB.14\*:145; MG.00:11; MM.11b\*:82







**Le peintre et son modèle.** Vallauris. 1954. Tin-glazed white earthenware, hand thrown, with wax resist and painted in oxides. 58,2 x 28,5 cm. Victoria and Albert Museum, London. (Inv C.109-1994). Commission from the Estate of Miss Margaret Shipway.

---

**OPP.54:301**

---

**Sillages IV.** Vallauris. 1954. Etching. 61 x 52,1 cm. DTR Modern Galleries. 2010.

---

**OPP.54:311**





**L'heure de midi.** Vallauris. 1954. Etching. 61 x 52,1 cm. DTR Modern Galleries.

---

**OPP.54:312**

**Sujet poule.** Vallauris. 1954. Glazed ceramic jug, edition 150. 17,8 cm. Christie's. #163, 5486, 11/11/10.

---

**OPP.54:325**; AR:251; BS.08b\*:20





**Bouteille gravée.** Vallauris. 1954. White earthenware vase. 42,5 x 16 cm. Sotheby's. #2, N10778, 10/23/21. Formerly The Bellagio Gallery of Fine Art, Las Vegas.

**OPP.54:336**

---

**Le vernissage.** Paris. 1954. Ink. S/U. Private collection.

**OPP.54:345; JW.72:85p**





**Centaure.** Vallauris. 1954. Blown glass. 30,5 cm. Christie's. #12, 8481, 11/30/00.

---

**OPP.54:360**

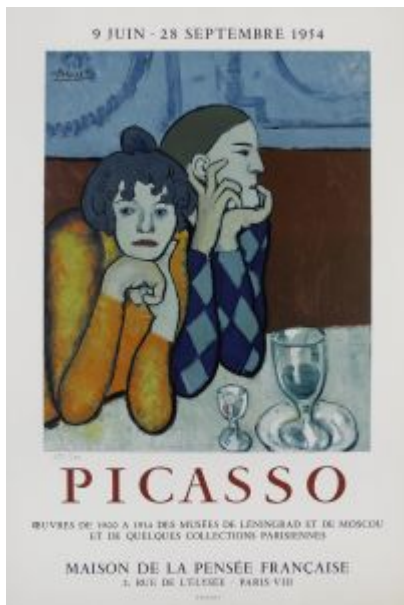
---

**Trois chevaux au galop.** Vallauris. 1954. Terracotta, painted with blue & brick red enamel on a gray background. 26 x 22 x 15 cm. Private collection.

---

**OPP.54:361**; JR.10\*:142p





**Maison de la Pensée - Œuvres de 1900-1914 des musées de Leningrad.** Vallauris. 1954. Lithographic poster printed in colors [After *Les deux saltimbanques (Arlequin et sa compagne)*]. 72,5 x 48,3 cm. Bonhams. #55, 19088, 09/27/11.

**OPP.54:368**; CC:85

**L'amour masqué III.** Vallauris. Post-29-January/1954. Lithograph [After *Deux personnages III*]. 24 x 32 cm. Bonhams. #139, 17832, 07/13/10.

**OPP.54:369**; KK.93:114





**Sylvette: Couverture (pour Verve: Revue artistique et littéraire)**,. Vallauris. 1954. Lithograph (Published in Verve Vol. 8, No. 29/30). 44,2 x 62,8 cm. Bonhams. #182, 19353, 10/25/11.

**OPP.54:370**; GB.14\*:1

**Deux personnages de cirque I.**  
Vallauris. Post-30-January/1954.  
Lithograph [After *Clown et acrobate I*].  
44,2 x 62,8 cm. Bonhams. #182, 19353,  
10/25/11.

**OPP.54:371**





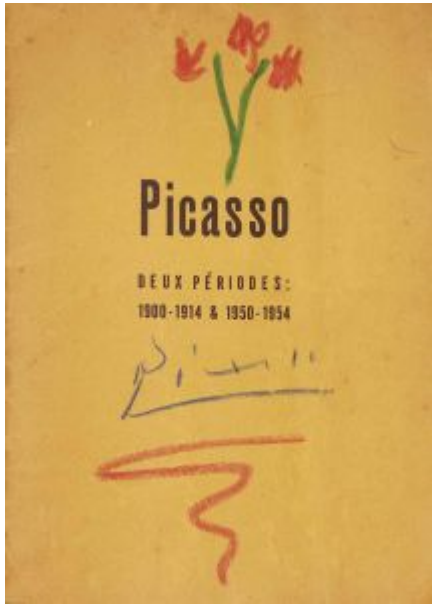
**Grande vase carré hibou.** Vallauris. 1954. Painted & partially glazed ceramic. 50 x 28,5 x 28,5 cm. Christie's. #442, 2596, 11/08/12.

**OPP.54:373**; GR.74:304

**Chèvre.** Vallauris. 1954. Hand modeled & glazed clay. 33 x 38,1 x 22,9 cm. Private collection.

**OPP.54:376**; WC.62\*:31





**Bouquet de fleurs.** Vallauris. 1954. Wax crayon on catalogue cover. 21,6 x 15,5 cm. Christie's. #92, 3518, 10/29/12.

**OPP.54:377**

---

**Colombe (À Robert Maillard).** Vallauris. 1954. Color crayon on front page of the book Claude Roy, La guerre et la paix. 36,3 x 26,1 cm. Sotheby's. #180, PF1213, 11/19/12.

**OPP.54:378**







**Pichet oiseau.** Vallauris. 1954. White clay. 32 x 36 x 12 cm. Museu de Ceràmica, Barcelona.

**OPP.54:388**; JM.07\*:65

---

**Le cirque.** Vallauris. 1954. Ceramic vase. 58,1 cm. Galerie Louise Leiris, Paris.

**OPP.54:389**; HJ.96:34p





**Tête profil gauche.** [Vallauris]. [1954]. Oil on canvas. 55 x 46 cm. Private collection.

**OPP.54:392;** JR.10\*:183p; MG.04b\*:111

---

**Corrida.** Vallauris. 1954. Glazed ceramic bowl. 17,8 cm. Christie's. #52, 9951, 06/18/13.

**OPP.54:409**





**Colombe (À Marc Grychendler)**. Cannes. 1954. Color pencil on front page of the book Claude Roy, La guerre et la paix. [26 x 19] 36,1 x 25,7 cm. Sotheby's. #319, N09861, 05/15/18. Formerly Artcurial. #331, 2285, 05/27/13.

**OPP.54:410**

---

**Couverture (Georges Hugnet, Ici la voix)**. Cannes~Vallauris. 1964. Illustration. 26 x 18,7 cm. Christie's. #150, 18402, 02/02/21.

**OPP.54:411**





**Nu dormant.** Cannes. 1954. Oil on canvas. S/U. Fundación Almine & Bernard Ruiz-Picasso para el Arte.

---

**OPP.54:423**; MI.24\*:n/a

---

**Deux personnages XIV.** Vallauris. Post-27-January/1954. Lithograph [After *Deux personnages XIV*]. 24 x 32 cm. Bonhams. #183, 19353, 10/25/11.

---

**OPP.54:427**





**Pigeon.** Cannes. 1954. Bronze. 13,3 x 31,8 x 11,1 cm. National Gallery of Art, Washington, DC. (Inv 1995.47.20). Collection of Mr. and Mrs. Paul Mellon.

**OPP.54:431**; ME.96\*:n/a

---

**Affiche Picasso Deux Périodes: 1900-1914 - 1950-1954.** Cannes. 1954. Lithograph in colors on wove paper [After *Jeux de pages*]. 40 x 48 cm. Bloomsbury. #98, 36099, 12/11/13.

**OPP.54:432**





**Le hibou de la mort (La Guerre et la Paix).** Cannes. 1954.  
Lithograph [After *Le hibou de la mort*]. S/U. Bonhams. #111,  
21612, 02/10/14.

**OPP.54:433**

**Buste de femme dit nudo.** Cannes. 1954.  
Blown blue glass. 53 x 31,5 x 15 cm.  
Sotheby's. #315, PF1434, 03/11-12/14.

**OPP.54:435**





**U. A. P. 54.** Cannes. 1954. Linoleum cut. 19,2 x 15 cm.  
Private collection.

**OPP.54:436;** B.II:1839

**Le peintre et son modèle.** Vallauris. 1954.  
Painted terracotta vase, black enamel. 36,5 x 25  
cm. Private collection.

**OPP.54:452;** TO.14\*:88





**Le petit dessinateur.** Vallauris. 1954. Lithograph. 65 x 50 cm. Sotheby's. #48, N09217, 11/03/14.

**OPP.54:480**; M:263.02

---

**Jacqueline.** Vallauris. [1954]. Graphite & ink on paper mounted to fabric. 21 x 17,5 cm. Private collection.

**OPP.54:481**; PJ.14\*:36p







**Vase de fleurs (Avec Luciano Emmer)**. Vallauris. 1954. Oil on glass. S/U. Private collection.

**OPP.54:486**; JR.14\*:312p

**Faune (Avec Edward Quinn)**. Vallauris. 1954. Oil on glass. S/U. Private collection.

**OPP.54:487**; JR.14\*:312p





**Taureau (Avec Paul Haesaerts)**. Vallauris. 1954. Oil on glass. S/U. Private collection.

**OPP.54:488**; JR.14\*:313p

**Faune et chèvre**. Vallauris. 1954. Blown colored glass. 2,8 x 2,6 x 2 cm. Scottish National Gallery of Modern Art, Edinburgh. Formerly Sotheby's. #131, L15162, 03/18/15.

**OPP.54:491**





**Femme assise au chapeau rouge.** Paris. [1954]. Colored, fused & fired layered glass (Gemmail) [After *Femme assise au chapeau rouge*]. S/U. Guernsey's. 2015.

**OPP.54:492**

---

**Soeur poursuivie par le diable.** Vallauris. 1954. Painted, glazed & incised ceramic; manipulated askos jug. 20,5 cm. Sotheby's. #128, L15007, 06/25/15.

**OPP.54:494**; FB.13\*:n/a; GS.85\*:149; KU.99\*:33; TF.00\*:14; TK.86\*:CC-12; VC.98\*:32





**Abstraction arabesque.** Vallauris. 1954. Painted, glazed & incised ceramic; jug. 26,5 cm. Sotheby's. #134, L15007, 06/25/15.

**OPP.54:497**; BU.22:75p; KU.99\*:34; TF.00\*:15; VC.98\*:33

---

**Abstraction géométrique.** Vallauris. 1954. Painted & partially glazed ceramic; jug. 23 cm. Sotheby's. #135, L15007, 06/25/15.

**OPP.54:498**





**Abstraction géométrique.** Vallauris. 1954. Painted & glazed ceramic; vase. 25,5 cm. Sotheby's. #221, L15007, 06/25/15.

**OPP.54:499**; BU.22:73p

**Nymphe et faune.** Paris. [1954]. Blown glass. 46 cm. Sotheby's. #244, N08742, 05/04/11.

**OPP.54:500**





**Oiseau.** Vallauris. 1954. Painted & incised ceramic askos jug. 26 cm. Sotheby's. #154, L18008, 06/20/18. Formerly Marina Picasso Collection.

**OPP.54:506**

---

**Chouette.** Vallauris. 1954. Painted & glazed ceramic jug. 17,7 cm. Sotheby's. #677, L16005, 02/05/15. Formerly Marina Picasso Collection.

**OPP.54:508**





**Chouette.** Vallauris. 1954. Painted & glazed ceramic vase. 25,3 cm. Sotheby's. #678, L16005, 02/05/16. Formerly Marina Picasso Collection.

**OPP.54:509**; HB.85\*:n/a

---

**Portrait de fillette (Paloma).** Vallauris. 1954. Color pencil on cardboard. 14,5 x 10,8 cm. Private collection.

**OPP.54:514**; MG.13\*:108p





**Paloma avec un jouet.** Vallauris. 1954. Blue ballpoint pen on cut-out paper. 13 x 28 cm. Private collection.

**OPP.54:515**; MG.13\*:108p

**Portrait de petit garçon (Claude).**  
Vallauris. 1854. Color pencil on cardboard.  
14,5 x 10,8 cm. Private collection.

**OPP.54:516**; MG.13\*:109p







**Claude avec un jouet.** Vallauris. 1954. Blue ballpoint pen on cut-out paper. 13 x 28 cm. Private collection.

**OPP.54:517**; MG.13\*:109p

---

**Nu féminin.** Vallauris. 1954. Terracotta pitcher, decorated in engobes & oxides. 35,5 x 13 cm. Musée Municipal d'Art Moderne, Céret. (Inv MAMC 1991.0323).

**OPP.54:520**; CE.04\*:188





**Tête.** Cannes. 1954. Paper cut-out. 11,5 x 12 cm. Museu Thermàlia, Caldes de Montbui.

**OPP.54:521**; CE.04\*:66; PE.17\*:31p

---

**Tête de faune.** Cannes. 1954. Paper cut-out. 11,5 x 12 cm. Museu Thermàlia, Caldes de Montbui.

**OPP.54:522**; CE.04\*:65; PE.17\*:31p





**Taureau.** Cannes. 1954. Paper cut-out. 12,5 x 21 cm. Museu Termàlia, Caldes de Montbui.

**OPP.54:523**; CE.04\*:64; PE.17\*:31p

---

**Pablo (palette de peintre).** Cannes. 1954. Color pencil on paper napkin holder. 12,1 x 27,8 cm. Museu Termàlia, Caldes de Montbui.

**OPP.54:524**; CE.04\*:67





**Rosa (maquina à coudre).** Cannes. 1954. Color pencil on paper napkin holder. 12,1 x 27,8 cm. Museu Termàlia, Caldes de Montbui.

**OPP.54:525;** CE.04\*:69

---

**Paulo (voiture).** Cannes. 1954. Color pencil on paper napkin holder. 12,1 x 27,8 cm. Museu Termàlia, Caldes de Montbui.

**OPP.54:526;** CE.04\*:68





**Totote (cœur).** Cannes, 1954. Color pencil on paper napkin holder. 12,1 x 27,8 cm. Museu Termàlia, Caldes de Montbui.

**OPP.54:527**; CE.04\*:70

**Homme aux bras levés sur la tête, photo avec découpage en surimpression (Avec André Villers).** Cannes~Vallauris, 1954. Gelatin silver print. S/U. Musée Picasso, Paris. (Inv APPH2337).

**OPP.54:530**





**Jacqueline tricotant.** Cannes. 1954. Oil on canvas. 73 x 54,9 cm. Private collection.

**OPP.54:531**; WL.17\*:27

---

**Pigeon.** Vallauris. 1954. Bronze, with brown patina. 15 x 25 cm. Museo Picasso, Málaga. On temporary loan from Fundación Almine & Bernard Ruiz-Picasso para el Arte.

**OPP.54:536**; WS:497.II; CG.04\*:96;  
MG.04b\*:110; NC.17\*:131





**Tête de chèvre et Colombe de paix.** Cannes. 1954. Pen & ink on paper (L'affaire Henri Martin). 18,8 x 11,2 cm. Swann Galleries, Inc. New York. 03/10/22.

**OPP.54:538**

**Oiseau sur une branche, photo avec découpage en surimpression (Avec André Villers).** Cannes~Vallauris. 1954. Gelatin silver print. S/U. Musée Picasso, Paris. (Inv APPH2233).

**OPP.54:539**



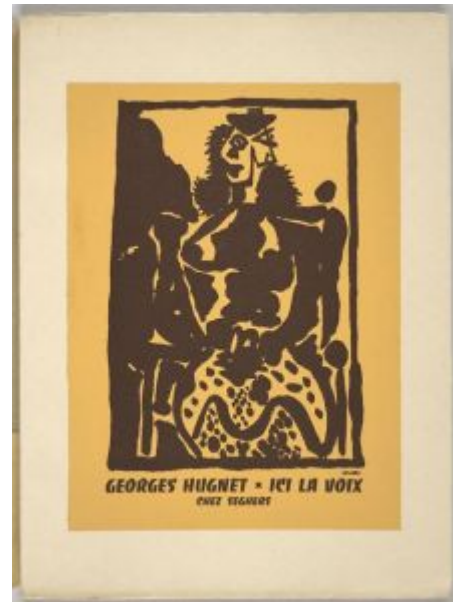


**Plein cadre: homme aux bras levés sur la tête, photo avec découpage en surimpression (Avec André Villers).**  
Cannes~Vallauris. 1954. Gelatin silver print. S/U. Musée Picasso, Paris. (Inv APPH2186).

**OPP.54:540**

**Couverture (Georges Hugnet, Ici la voix).**  
Cannes~Vallauris. 1954. Reproduction [After *Femme assise* (Georges Hugnet, *Non Vouloir*)]. 26 x 19 cm.  
Musée Picasso, Paris. (Inv BIB6621).

**OPP.54:541**







**Figures, photo avec découpage en surimpression (Avec André Villers).** Cannes~Vallauris. 1954. Gelatin silver print. 40,1 x 30,5 cm. Musée Picasso, Paris. (Inv APPH2187).

**OPP.54:542**

---

**Visage féminin de profil, photo avec découpage en surimpression (Avec André Villers).** Cannes~Vallauris. 1954. Gelatin silver print. S/U. Musée Picasso, Paris. (Inv APPH2235).

**OPP.54:543**





**Oiseau sur une branche, photo avec découpage en surimpression (Avec André Villers).** Cannes~Vallauris. 1954. Gelatin silver print. S/U. Musée Picasso, Paris. (Inv APPH2232).

**OPP.54:544**

---

**Poisson, photo avec découpage en surimpression (Avec André Villers).** Cannes~Vallauris. 1954. Gelatin silver print. S/U. Musée Picasso, Paris. (Inv APPH2236).

**OPP.54:545**





**La guerre et la paix (Claude Roy, La guerre et la paix).** Vallauris. 1954. Lithograph [After *Femme couchée V*]. 37,2 x 26,2 cm. Sotheby's. #102, 03/27/18.

**OPP.54:550**

---

**Tête de faune.** Vallauris. 1954. India ink on paper. 32 x 24 cm. Private collection.

**OPP.54:596;** PP.54:170; Z.XVI:271





**Colombe de la paix.** Paris. [1954]. Ballpoint pen on page of H  l  ne Parmelin, L'affaire Henri Martin. S/U. Pichon & Noudel-Deniau, Cannes. 10/28/17.

**OPP.54:605**

**Chaise berline.** Perpignan. 1954. Cut-out drawing paper. 13 x 21 cm. Private collection.

**OPP.54:630**; PE.17\*:29p





**Masque.** Vallauris. [1954]. Partially painted & glazed ceramic; oval plate. 21,8 cm. Sotheby's. #146, L20005, 02/19/20. Formerly Marina Picasso Collection.

---

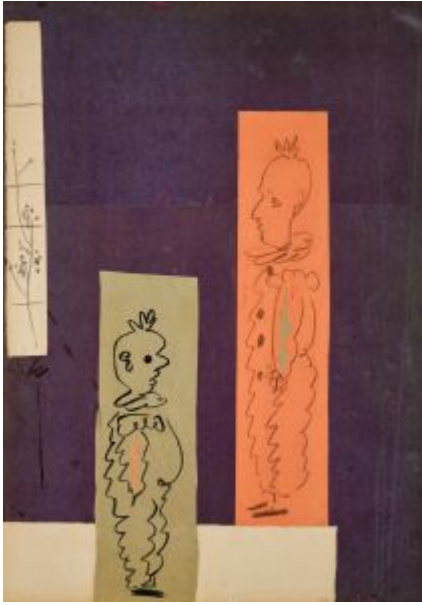
**OPP.54:631**

**Colombe annonçant la paix (Pour Richard Lomazzi).** Cannes. [1954]. Colored chalk front page of Claude Roy, *La guerre et la paix*. 36,5 x 26 cm. Sotheby's. #1, L20009, 10/06/20.

---

**OPP.54:633**





**Deux clowns.** Vallauris. 1954. Collage, brush & ink & pencil on the reverse of a poster-board. 75,2 x 54,5 cm. Sotheby's. #12, L21005, 04/14/21. Formerly Marina Picasso Collection. (Inv 5122).

**OPP.54:636;** CN.94\*:n/a; DO.07\*:215; KU.99\*:n/a; TK.00\*:134; WS.95a\*:155

---

**Pichet bleu et brun.** Vallauris. 1954. White earthenware ceramic pitcher with colored engobe and glaze. 22,9 cm. Christie's. #42, 18804, 11/01-15/21.

**OPP.54:637**





**Visage féminin.** Vallauris. 1954. White terracotta, blue & brown paint on white background. 34 x 17,5 cm. Private collection.

**OPP.54:645;** TE.21\*:204

---

**Assiette (Femme assise).** Vallauris. [1954]. Glazed ceramic. 24 cm. Sotheby's. #42, N10944, 04/14/22.

**OPP.54:647**





**Assiette (Colombe de la Paix).** Vallauris.  
[1954]. Glazed ceramic. 24 cm. Sotheby's. #41,  
N10944, 04/14/22.

---

**OPP.54:648**

---

**Assiette (Portrait d'Eluard).** Vallauris.  
[1954]. Glazed ceramic. 24 cm. Sotheby's.  
#40, N10944, 04/14/22.

---

**OPP.54:649**







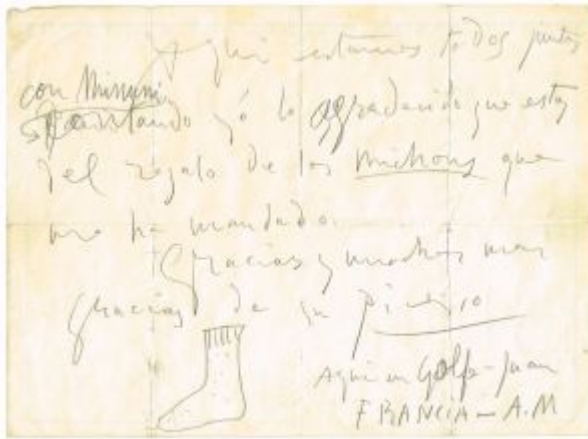
**Faune jouant de la diaule.** Vallauris. 1954. Colored crayon. 15,9 × 11,5 cm. The Baltimore Museum of Art. (Inv 64.11.16). Bequest of Mabel Garrison Siemonn, in Memory of her Husband, George Siemonn.

**OPP.54:651**

**Vue de Notre-Dame de Paris.** Paris. [1954]. Colored, fused & fired layered glass (Gemmail) [After *Vue de Notre-Dame de Paris*]. S/U. Private collection.

**OPP.54:652**





**Lettre manuscrite.** Golfe-Juan. 1954. Pencil on paper. 30.5 x 48.3 cm. KOTTE Autographs GmbH, Rosshaupten.

**OPP.54:659**

**Personnages et têtes.** Vallauris. 1954. Ceramic plate painted terracotta, edition 25. [22] 25,5 x 56 cm. Sotheby's. #139, 10/25/00.

**OPP.54:034**; AR:242; B.III:50; IG.89\*:n/a; LR.07\*:52





**Bouteille gravée.** Vallauris. 1954. White earthenware vase, decoration in engobes & paraffin, boring-rod engraved, white enamel, painted in black & beige, edition 300. [42,5] 43,5 x 16 cm. Sotheby's. #462, N07717, 11/02/01.

**OPP.54:047**; AR:249; CH.08a\*:n/a; SM.09\*:n/a

---

**Pichet espagnol en forme de poule.** Vallauris. 1954. White earthenware pitcher, decoration in engobes, knife engraved, glaze inside, painted in blue & black, edition 300. 22,5 x 11,5 x 24 cm. Sotheby's. #460, N07717, 11/02/01.

**OPP.54:052**; AR:244



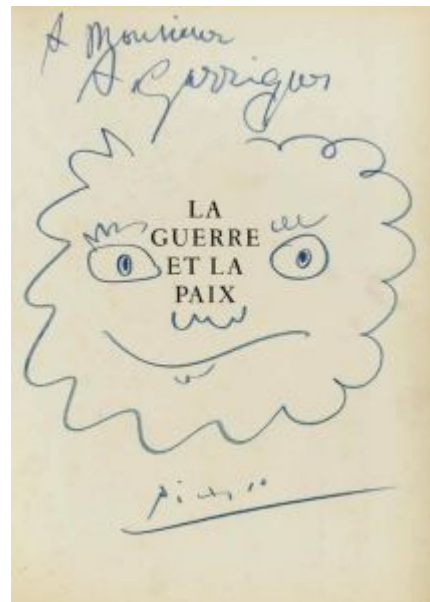


**La chèvre.** Vallauris. 1954. Blown glass. 32,4 cm.  
Sotheby's. #69, N07767, 02/21/02.

**OPP.54:055**

**La Guerre et la Paix (A Monsieur A. Guriques).**  
Vallauris. 1954. [Crayon]. 37,5 x 27,5 cm. Christie's. #215,  
5007, 05/17/02.

**OPP.54:058**



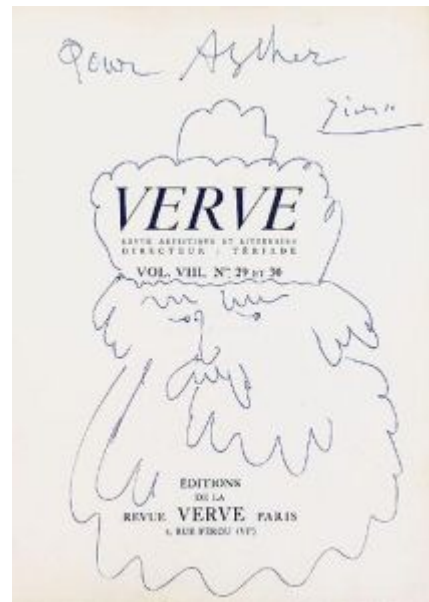


**Hibou.** Vallauris. 1954. White earthenware pitcher, oxide decoration on white enamel, painted in blue, edition 500. 24,5 x 13 cm. Christie's. #174, 2415, 12/18/02.

**OPP.54:064**; AR:253

**Esquisse pour Ascher.** Vallauris. 1954. Ballpoint pen on paper. 35,5 x 26 cm. Sotheby's. #97, W03703, 03/20/03.

**OPP.54:124**



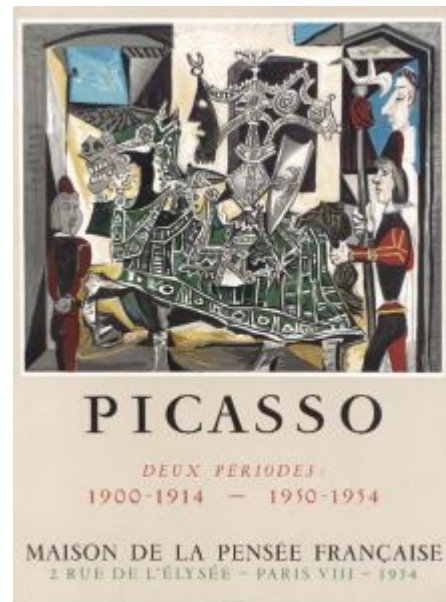


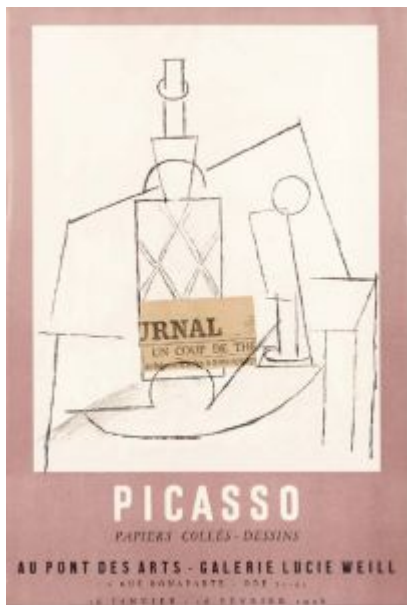
**Pichet espagnol.** Vallauris. 1954. White earthenware pitcher, decoration in engobes, knife engraved, glaze inside, painted in blue & black, edition 150. 22,5 x 12 x 25 cm. Sotheby's. #373, AM0888, 05/27/03.

**OPP.54:135**; AR:245

**Affiche Picasso Deux Périodes: 1900-1914 - 1950-1954.** [Paris]. 1954. Lithograph in colors on wove paper [After *Affiche Picasso Deux Périodes: 1900-1914 - 1950-1954*]. 40 x 48 cm. Christie's. #80, 1259, 07/23/03.

**OPP.54:138**



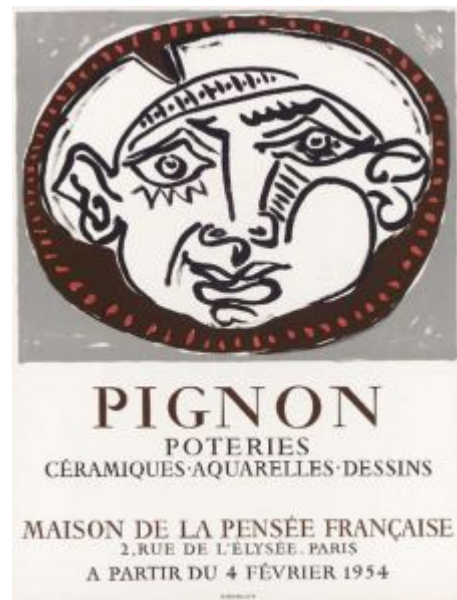


**Affiche Picasso Papiers Collés - Dessins.** [Paris]. 1954. Lithograph in colors on wove paper [After *Bouteille de Pernod, verre et journal sur une table*]. S/U. Christie's. #81, 1259, 07/23/03.

**OPP.54:139**

**Affiche Pignon Poteries Céramiques Aquarelles Dessins.** [Paris]. 1954. Lithograph in colors on wove paper. 62,2 x 46,6 cm. Christie's. #78, 1259, 07/23/03.

**OPP.54:140**





**Cruche à décor poule.** Vallauris. 1954. White earthenware jug, oxide decoration on white enamel, painted in blue, edition 500. 13 x 17,5 cm. Sotheby's. #63, W03716, 10/22/03.

**OPP.54:142;** AR:250

---

**La tarasque.** Vallauris. 1954. Glazed ceramic, edition 50. 36,8 cm. Christie's. #430, 9940, 10/21/04.

**OPP.54:158;** AR:247







**Hibou.** Vallauris. [1952] 1954. White earthenware pitcher, oxide decoration on white enamel, painted in blue, edition 200. [13,6 x 12,7] 13,5 x 12 cm. Christie's. #209, 1428, 11/02/04.

**OPP.54:161**; AR:252

---

**Pichet: Peintre, sculpteur et leurs modeles.**

Vallauris. 1954. Hand painted terracotta pitcher. 23,1 x 17 cm. Sotheby's. #43, NY7382, 11/10/99.

**OPP.54:178**; GR.74:299





**Plus d'une semaine (Geneviève Laporte, Les Cavaliers d'ombre).** [Paris]. 1954. Engraving. 27,5 x 21,5 cm. The Museum of Modern Art, NYC. (Inv 1004.1964). The Louis E. Stern Collection. Also Artcurial. #23, 06/27/05.

**OPP.54:186**

**Le hibou aux étoiles (Geneviève Laporte, Les Cavaliers d'ombre).** [Paris]. 1954. Engraving. 37 x 29,5 cm. Artcurial. #24, 06/27/05.

**OPP.54:187**





**Portrait de Midjick (Geneviève Laporte, Les Cavaliers d'ombre).** [Paris]. 1954. Engraving. 36 x 28,5 cm. Artcurial. #25, 06/27/05.

**OPP.54:188**

**Geneviève attachant sa sandale (Geneviève Laporte, Les Cavaliers d'ombre).** [Paris]. 1954. Engraving. 36 x 28,5 cm. Artcurial. #26, 06/27/05.

**OPP.54:189**





**Vogue l'Amour masque (Geneviève Laporte, Les Cavaliers d'ombre).** [Paris]. 1954. Engraving. 36 x 28,5 cm. Artcurial. #27, 06/27/05.

**OPP.54:190**

**Le faune (Geneviève Laporte, Les Cavaliers d'ombre).** [Paris]. 1954. Engraving. 36 x 28,5 cm. Artcurial. #28, 06/27/05.

**OPP.54:191**



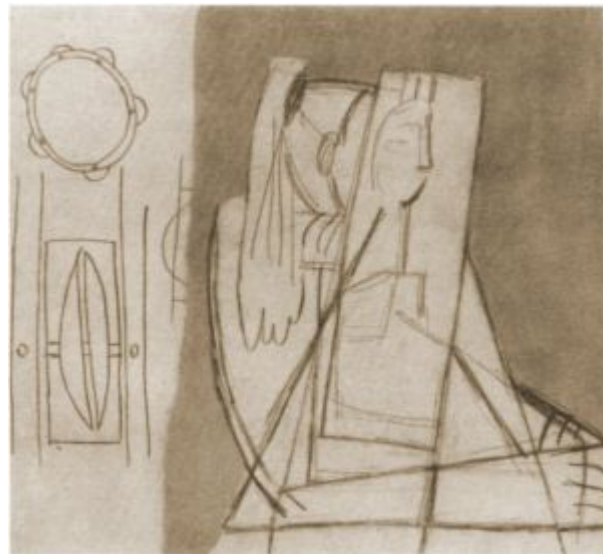


**Sylvette.** Vallauris. 1954. White chalk on cut-out cardboard. 61,5 x 50 cm. Private collection. Formerly Sotheby's. #164, 12/02/92.

**OPP.54:208**; PP.54:190\*; WS:488.I; GB.14\*:56

**Étude: Sylvette.** Vallauris. 1954. Pencil. 27 x 9; 23,5 x 19. Private collection.

**OPP.54:216**; PP.54:202; Z.XVI:301a;  
Z.XVI:301b





**Femme nue couchée.** Vallauris. 1954.  
Lithograph, edition 25. 38,4 x 49,9 cm. Nikola  
Rukaj Gallery, 2006.

**OPP.54:224**

**Joueur de diaule.** Cannes. 1954~955.  
White terracotta, glazed & incised,  
mounted on a wood support with a metal  
armature. [115 x 125 x 50] 116 x 126 x 48  
cm. Museo Picasso, Málaga. On temporary  
loan from Fundación Almine & Bernard  
Ruiz-Picasso para el Arte.

**OPP.54:394**; CG.04\*:101; DP.20\*:161;  
HA.02\*:173; JR.10\*:223p; MG.04b\*:113;  
NC.17\*:133; PA.20j\*:160





**Poissons (Diurnes) (Avec André Villers).**  
Cannes~Vallauris. [1954~1961]. Gelatin silver print. 30,2 x 40 cm. Musée Picasso, Paris. (Inv APPH2114).

**OPP.54:639**; PP.20\*:321

**Figures, photo avec découpage en surimpression (Avec André Villers).**  
Cannes~Vallauris. [1954~1961]. Gelatin silver print. 30,5 x 24 cm. Musée Picasso, Paris. (Inv APPH 2280).

**OPP.54:381**; AB.97b\*:252; BL.06:25p;  
WR.96:208p





**Tête de femme (Avec André Villers).** Cannes~Vallauris. [1954~1961]. Gelatin silver print. 30,5 x 24 cm. Musée Picasso, Paris.

**OPP.54:382**; WR.96:208p

**Femme au chat (Avec André Villers).** Cannes~Vallauris. [1954~1961]. Gelatin silver print. 30,5 x 24 cm. André Villers Collection.

**OPP.54:383**; WR.96:208p







**Joueur de diaule (Avec André Villers).** Cannes~Vallauris. 1954~1961. Gelatin silver print. 40 x 30,4 cm. Musée Picasso, Paris. (Inv APPH2046).

**OPP.54:640**; PA.20j\*:181

**Joueur de diaule (Avec André Villers).** Cannes~Vallauris. 1954~1961. Gelatin silver print. 26,2 x 29,8 cm. Musée Picasso, Paris. (Inv APPH2045).

**OPP.54:641**; PA.20j\*:182





**Joueur de diaule (Avec André Villers).**

Cannes~Vallauris. 1954~1961. Gelatin silver print. 30,3 x 39,9 cm. Musée Picasso, Paris. (Inv APPH2334).

**OPP.54:642**; PA.20j\*:183

---

**Figures (Avec André Villers).** Cannes~Vallauris. 1954~1961. Gelatin silver print. 40 x 32 cm. Musée Picasso, Paris. (Inv APPH2792).

**OPP.54:643**; PA.20j\*:184





**Joueur de diaule (Avec André Villers).** Cannes~Vallauris. 1954~1961. Gelatin silver print. 40 x 30 cm. Musée Picasso, Paris. (Inv APPH2351).

**OPP.54:644**; PA.20j\*:187

**Masque (Avec André Villers).** Vallauris [Cannes]. 1954~1961. Gelatin silver print. 40 x 30,4 cm. Musée Picasso, Paris.

**OPP.54:646**; PA.21f\*:62

